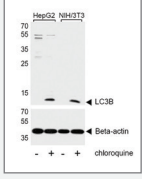
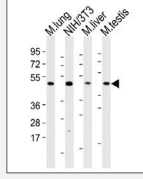




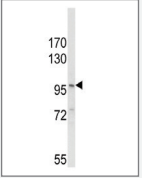
## Featured Antibodies



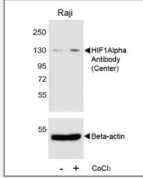
**LC3 Antibody (APG8B) (N-term)**  
Catalog# **AP1802a**  
Application: WB, IHC-P, IF, E  
Host: Rabbit  
Clonality: Polyclonal  
Isotype: Rabbit Ig



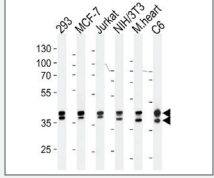
**M Mkl1 Antibody (C-term)**  
Catalog# **AP14272b**  
Application: WB, E  
Host: Rabbit  
Clonality: Polyclonal  
Isotype: Rabbit Ig



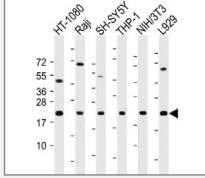
**NLRP3 Antibody (N-term)**  
Catalog# **AP8564A**  
Application: WB, IHC-P, E  
Host: Rabbit  
Clonality: Polyclonal  
Isotype: Rabbit Ig



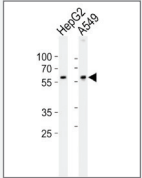
**HIF1Alpha Antibody (Center)**  
Catalog# **AP7759C**  
Application: WB, IHC-P, IF, FC, E  
Host: Rabbit  
Clonality: Polyclonal  
Isotype: Rabbit Ig



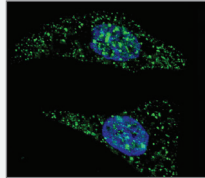
**Erk1/2 Antibody**  
Catalog# **AM2189b**  
Application: WB, FC, E  
Host: Mouse  
Clonality: Monoclonal  
Isotype: IgG2a



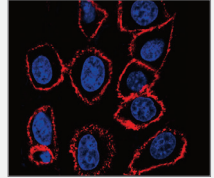
**Bax Antibody (BH3 Domain Specific)**  
Catalog# **AP1302a**  
Application: FC, WB, IHC-P, E  
Host: Rabbit  
Clonality: Polyclonal  
Isotype: Rabbit Ig



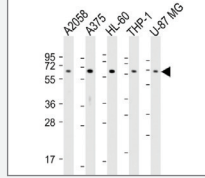
**USP22 Antibody (C-term)**  
Catalog# **AP2148b**  
Application: WB, IHC-P, E  
Host: Rabbit  
Clonality: Polyclonal  
Isotype: Rabbit Ig



**ATG5 Antibody (N-term)**  
Catalog# **AP1812a**  
Application: WB, IHC-P, IF, E  
Host: Rabbit  
Clonality: Polyclonal  
Isotype: Rabbit Ig



**CD44 Antibody**  
Catalog# **AM1901b**  
Application: WB, IHC-P, IF, FC, E  
Host: Mouse  
Clonality: Monoclonal  
Isotype: IgG2a ,K



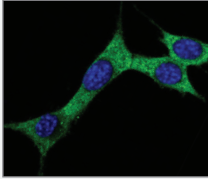
**CD63 Antibody (C-term)**  
Catalog# **AP5333b**  
Application: WB, IHC-P, FC, E  
Host: Rabbit  
Clonality: Polyclonal  
Isotype: Rabbit IgG



Inquire For Your Free Sample  
[www.abgent.com/freesample](http://www.abgent.com/freesample)

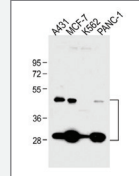


## Featured Antibodies



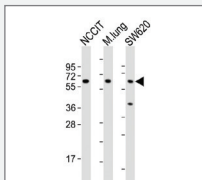
### Cleaved LC3A Antibody

Catalog# **AP1805a**  
Application: WB, IHC-P, IF, ICC, E  
Host: Rabbit  
Clonality: Polyclonal  
Isotype: Rabbit Ig



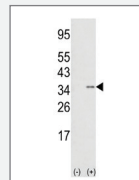
### CTSD Antibody

Catalog# **AP20675b**  
Application: WB, IHC-P, IF, E  
Host: Rabbit  
Clonality: Polyclonal  
Isotype: Rabbit Ig



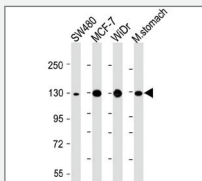
### TGFBR2 Antibody (N-term)

Catalog# **AP11854A**  
Application: WB, IHC-P, IF, E  
Host: Rabbit  
Clonality: Polyclonal  
Isotype: Rabbit Ig



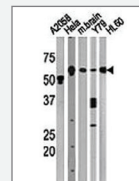
### SNAI1 Antibody (N-term D24)

Catalog# **AP2054a**  
Application: WB, IHC-P, E  
Host: Rabbit  
Clonality: Polyclonal  
Isotype: Rabbit Ig



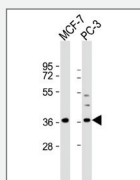
### CDH1 Antibody

Catalog# **AM2190b**  
Application: IHC-P, WB, E  
Host: Mouse  
Clonality: Monoclonal  
Isotype: IgG1,k



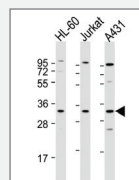
### Beclin 1 Antibody

Catalog# **AP1818b**  
Application: WB, IHC-P, FC, E  
Host: Rabbit  
Clonality: Polyclonal  
Isotype: Rabbit Ig



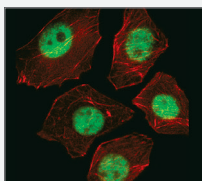
### VEGF Antibody (C-term)

Catalog# **AP6290b**  
Application: WB, IHC-P, E  
Host: Rabbit  
Clonality: Polyclonal  
Isotype: Rabbit IgG1



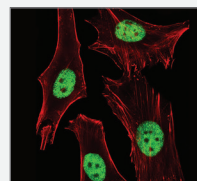
### Caspase-3 (CASP3) Antibody (Center)

Catalog# **AP7563C**  
Application: WB, IHC-P, FC, E  
Host: Rabbit  
Clonality: Polyclonal  
Isotype: Rabbit Ig



### SOX2 Antibody

Catalog# **AM2048a**  
Application: WB, IHC-P, IF, FC, E  
Host: Mouse  
Clonality: Monoclonal  
Isotype: IgG1



### PPARA Antibody

Catalog# **AM8425b**  
Application: WB, FC, IF, IHC-P, E  
Host: Mouse  
Clonality: Monoclonal  
Isotype: IgG1,k



**Custom Services**  
[www.abgent.com/custom-services](http://www.abgent.com/custom-services)

✓ **Get Your Free Quote Today!** Email: [sales@abgent.com](mailto:sales@abgent.com) or Tel: 888.735.7227