

**Anti-GDF15 Picoband Antibody**  
**Catalog # ABO10195****Specification**

---

**Anti-GDF15 Picoband Antibody - Product Information**

Application	WB
Primary Accession	<a href="#">Q99988</a>
Host	Rabbit
Reactivity	Human
Clonality	Polyclonal
Format	Lyophilized

**Description**

Rabbit IgG polyclonal antibody for Growth/differentiation factor 15(GDF15) detection. Tested with WB in Human.

**Reconstitution**

Add 0.2ml of distilled water will yield a concentration of 500ug/ml.

**Anti-GDF15 Picoband Antibody - Additional Information**

**Gene ID** 9518

**Other Names**

Growth/differentiation factor 15, GDF-15, Macrophage inhibitory cytokine 1, MIC-1, NSAID-activated gene 1 protein, NAG-1, NSAID-regulated gene 1 protein, NRG-1, Placental TGF-beta, Placental bone morphogenetic protein, Prostate differentiation factor, GDF15, MIC1, PDF, PLAB, PTGFB

**Calculated MW**

34140 MW KDa

**Application Details**

Western blot, 0.1-0.5 µg/ml, Human<br>

**Subcellular Localization**

Secreted .

**Tissue Specificity**

Highly expressed in placenta, with lower levels in prostate and colon and some expression in kidney.

**Protein Name**

Growth/differentiation factor 15

**Contents**

Each vial contains 5mg BSA, 0.9mg NaCl, 0.2mg Na<sub>2</sub>HPO<sub>4</sub>, 0.05mg Na<sub>3</sub>.

**Immunogen**

E.coli-derived human GDF15 recombinant protein (Position: A195-I308). Human GDF15 shares

68.1% and 69.2% amino acid (aa) sequence identity with mouse and rat GDF15, respectively.

**Purification**

Immunogen affinity purified.

**Cross Reactivity**

No cross reactivity with other proteins.

**Storage**

**At -20°C for one year. After reconstitution, at 4°C for one month. It can also be aliquotted and stored frozen at -20°C for a longer time. Avoid repeated freezing and thawing.**

**Anti-GDF15 Picoband Antibody - Protein Information**

**Name** GDF15 ([HGNC:30142](#))

**Function**

Regulates food intake, energy expenditure and body weight in response to metabolic and toxin-induced stresses (PubMed:[28953886](http://www.uniprot.org/citations/28953886), PubMed:[28846097](http://www.uniprot.org/citations/28846097), PubMed:[28846098](http://www.uniprot.org/citations/28846098), PubMed:[28846099](http://www.uniprot.org/citations/28846099), PubMed:[23468844](http://www.uniprot.org/citations/23468844), PubMed:[29046435](http://www.uniprot.org/citations/29046435)). Binds to its receptor, GFRAL, and activates GFRAL- expressing neurons localized in the area postrema and nucleus tractus solitarius of the brainstem (PubMed:[28953886](http://www.uniprot.org/citations/28953886), PubMed:[28846097](http://www.uniprot.org/citations/28846097), PubMed:[28846098](http://www.uniprot.org/citations/28846098), PubMed:[28846099](http://www.uniprot.org/citations/28846099)). It then triggers the activation of neurons localized within the parabrachial nucleus and central amygdala, which constitutes part of the 'emergency circuit' that shapes feeding responses to stressful conditions (PubMed:[28953886](http://www.uniprot.org/citations/28953886)). On hepatocytes, inhibits growth hormone signaling (By similarity).

**Cellular Location**

Secreted

**Tissue Location**

Highly expressed in placenta, with lower levels in prostate and colon and some expression in kidney (PubMed:9348093) Detected in plasma (at protein level) (PubMed:28572090, PubMed:29046435).

**Anti-GDF15 Picoband Antibody - Protocols**

Provided below are standard protocols that you may find useful for product applications.

- [Western Blot](#)
- [Blocking Peptides](#)
- [Dot Blot](#)
- [Immunohistochemistry](#)

- [Immunofluorescence](#)
- [Immunoprecipitation](#)
- [Flow Cytometry](#)
- [Cell Culture](#)

### Anti-GDF15 Picoband Antibody - Images

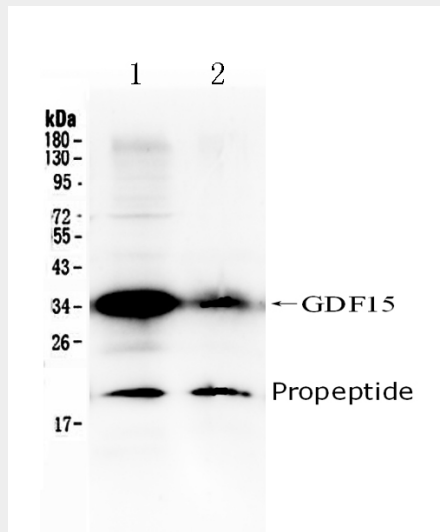


Figure 1. Western blot analysis of GDF15 using anti- GDF15 antibody (ABO10195). Electrophoresis was performed on a 5-20% SDS-PAGE gel at 70V (Stacking gel) / 90V (Resolving gel) for 2-3 hours. The sample well of each lane was loaded with 50ug of sample under reducing conditions. Lane 1: 22RV whole Cell lysates, Lane 2: human placenta tissue lysates. After Electrophoresis, proteins were transferred to a Nitrocellulose membrane at 150mA for 50-90 minutes. Blocked the membrane with 5% Non-fat Milk/ TBS for 1.5 hour at RT. The membrane was incubated with rabbit anti- GDF15 antigen affinity purified polyclonal antibody (Catalog # ABO10195) at 0.5  $\mu$ g/mL overnight at 4 $^{\circ}$ C, then washed with TBS-0.1%Tween 3 times with 5 minutes each and probed with a goat anti-rabbit IgG-HRP secondary antibody at a dilution of 1:10000 for 1.5 hour at RT. The signal is developed using an Enhanced Chemiluminescent detection (ECL) kit with Tanon 5200 system. A specific band was detected for GDF15 at approximately 34KD. The expected band size for GDF15 is at 34KD.

### Anti-GDF15 Picoband Antibody - Background

Growth/differentiation factor 15 (GDF15) is a protein belonging to the transforming growth factor beta superfamily that has a role in regulating inflammatory and apoptotic pathways in injured tissues and during disease processes. GDF15 is also known as TGF-PL, MIC-1, PDF, PLAB, and PTGFB. GDF15 mRNA is most abundant in the liver, with lower levels seen in some other tissues. Its expression in liver can be significantly up-regulated in during injury of organs such as liver, kidney, heart and lung.