

Anti-Phosphoserine Antibody (Monoclonal, PSR-45)
Catalog # ABO10469**Specification**

Anti-Phosphoserine Antibody (Monoclonal, PSR-45) - Product Information

| | |
|-------------------|------------------------|
| Application | WB |
| Primary Accession | Q5M819 |
| Host | Mouse |
| Isotype | Mouse IgG1 |
| Reactivity | Human |
| Clonality | Monoclonal |
| Format | Lyophilized |

Description

Mouse IgG monoclonal antibody for Phosphoserine detection. Tested with WB in Human; all kinds of animals.No cross reactivity with otherproteins.

Reconstitution

Add 1ml of PBS buffer will yield a concentration of 100ug/ml.

Anti-Phosphoserine Antibody (Monoclonal, PSR-45) - Additional Information

Gene ID 304429

Other Names

Phosphoserine phosphatase, PSP, PSPase, 3.1.3.3, O-phosphoserine phosphohydrolase, Psph

Calculated MW

24968 MW KDa

Application Details

Western blot, 1-2 µg/ml, Human, all kinds of animals

Tissue Specificity

PSAT1: Expressed at high levels in the brain, liver,kidney and pancreas, and very weakly expressed in the thymus,prostate, testis and colon.

Protein Name

Phosphoserine phosphatase

Contents

Mouse ascites fluid, 1.2% sodium acetate, 2mg BSA, with 0.01mg NaN3 as preservative.

Immunogen

Phosphoserine conjugated to Keyhole Limpet Hemocyanin(KLH).

Purification

Ascites

Cross Reactivity

No cross reactivity with other proteins

Storage

At -20°C for one year. After reconstitution, at 4°C for one month. It can also be aliquotted and stored frozen at -20°C for a longer time. Avoid repeated freezing and thawing.

Anti-Phosphoserine Antibody (Monoclonal, PSR-45) - Protein Information

Name Psph {ECO:0000312|RGD:1308764}

Function

Catalyzes the last irreversible step in the biosynthesis of L-serine from carbohydrates, the dephosphorylation of O-phospho-L-serine to L-serine. L-serine can then be used in protein synthesis, to produce other amino acids, in nucleotide metabolism or in glutathione synthesis, or can be racemized to D-serine, a neuromodulator. May also act on O-phospho-D-serine.

Cellular Location

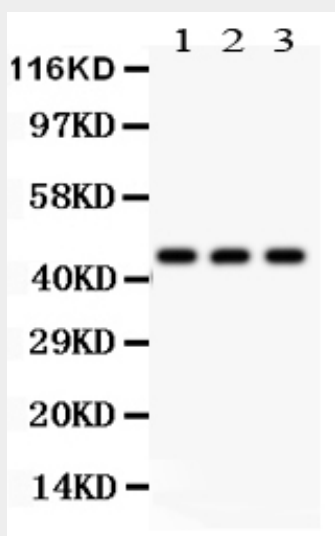
Cytoplasm, cytosol {ECO:0000250|UniProtKB:P78330}

Anti-Phosphoserine Antibody (Monoclonal, PSR-45) - Protocols

Provided below are standard protocols that you may find useful for product applications.

- [Western Blot](#)
- [Blocking Peptides](#)
- [Dot Blot](#)
- [Immunohistochemistry](#)
- [Immunofluorescence](#)
- [Immunoprecipitation](#)
- [Flow Cytometry](#)
- [Cell Culture](#)

Anti-Phosphoserine Antibody (Monoclonal, PSR-45) - Images



Anti-Phosphoserine antibody (monoclonal), ABO10469, Western blottingAll lanes: Anti Phosphoserine (ABO10469) at 0.5ug/mlLane 1: Rat Kidney Tissue Lysate at 50ugLane 2: HELA Whole Cell Lysate at 40ugLane 3: MCF-7 Whole Cell Lysate at 40ugPredicted bind size: 45KDObserved bind size: 45KD

Anti-Phosphoserine Antibody (Monoclonal, PSR-45) - Background

Phosphoserine phosphatase fills an important role in the biosynthesis of serine from carbohydrates by catalyzing the last step, hydrolysis of O-phosphoserine. Phosphoserine phosphatase activity in lymphoblasts and fibroblasts was reduced to 25% of normal values. The human phosphoserine gene(PSP)is mapped to the pter-q22 region of chromosome 7.