

Anti-Decorin Antibody
Catalog # ABO10639**Specification**

Anti-Decorin Antibody - Product Information

Application	WB
Primary Accession	P07585
Host	Rabbit
Reactivity	Human, Mouse, Rat
Clonality	Polyclonal
Format	Lyophilized

Description

Rabbit IgG polyclonal antibody for Decorin(DCN) detection. Tested with WB in Human;Mouse;Rat.

Reconstitution

Add 0.2ml of distilled water will yield a concentration of 500ug/ml.

Anti-Decorin Antibody - Additional Information

Gene ID 1634

Other Names

Decorin, Bone proteoglycan II, PG-S2, PG40, DCN, SLRR1B

Calculated MW

39747 MW KDa

Application Details

Western blot, 0.1-0.5 µg/ml, Human, Rat, Mouse

Subcellular Localization

Secreted, extracellular space, extracellular matrix.

Protein Name

Decorin

Contents

Each vial contains 5mg BSA, 0.9mg NaCl, 0.2mg Na₂HPO₄, 0.05mg Thimerosal, 0.05mg NaN₃.

Immunogen

A synthetic peptide corresponding to a sequence at the C-terminus of human Decorin(343-359aa TFRVYVRSIAQLGNYK), identical to the related mouse sequence, and different from the related rat sequence by three amino acids.

Purification

Immunogen affinity purified.

Cross Reactivity

No cross reactivity with other proteins

Storage

At -20°C for one year. After reconstitution, at 4°C for one month. It can also be aliquotted and stored frozen at -20°C for a longer time. Avoid repeated freezing and thawing.

Sequence Similarities

Belongs to the small leucine-rich proteoglycan (SLRP) family. SLRP class I subfamily.

Anti-Decorin Antibody - Protein Information

Name DCN

Synonyms SLRR1B

Function

May affect the rate of fibrils formation.

Cellular Location

Secreted, extracellular space, extracellular matrix. Secreted

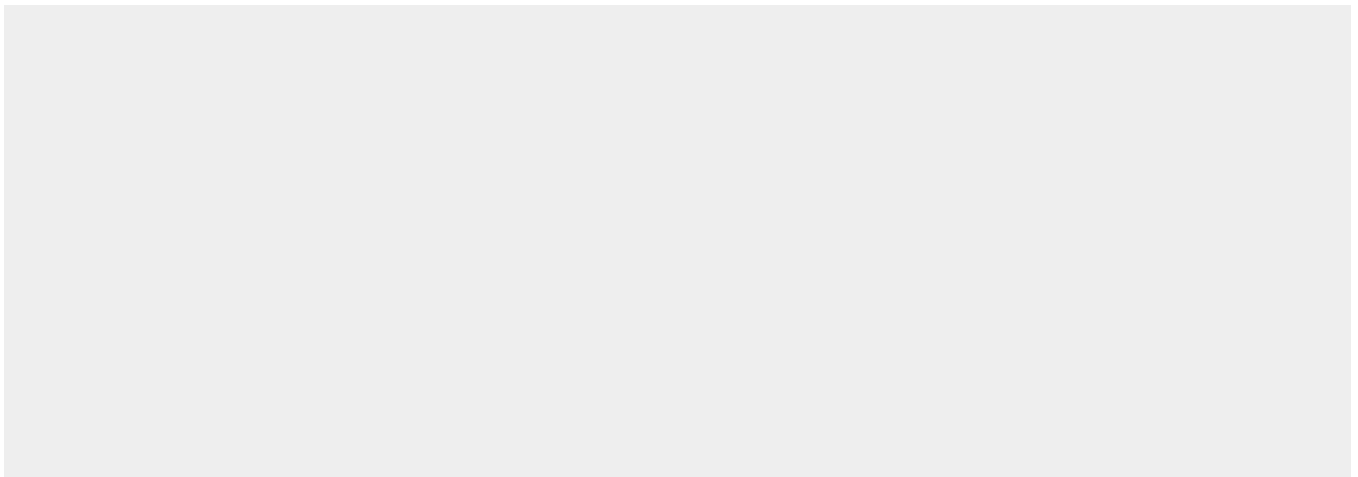
Tissue Location

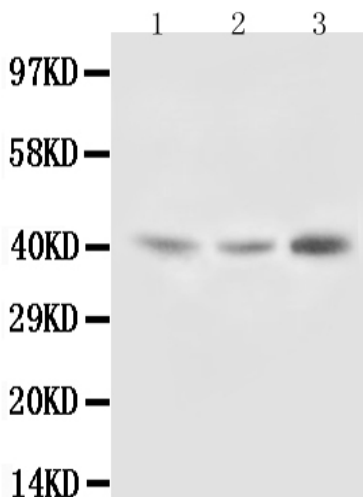
Detected in placenta (at protein level) (PubMed:32337544). Detected in cerebrospinal fluid, fibroblasts and urine (at protein level) (PubMed:25326458, PubMed:36213313, PubMed:37453717).

Anti-Decorin Antibody - Protocols

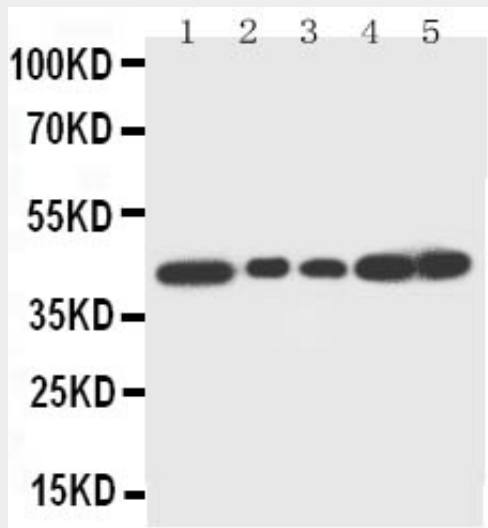
Provided below are standard protocols that you may find useful for product applications.

- [Western Blot](#)
- [Blocking Peptides](#)
- [Dot Blot](#)
- [Immunohistochemistry](#)
- [Immunofluorescence](#)
- [Immunoprecipitation](#)
- [Flow Cytometry](#)
- [Cell Culture](#)

Anti-Decorin Antibody - Images



Anti-Decorin antibody, ABO10639, Western blotting
Lane 1: Rat Liver Tissue Lysate
Lane 2: Rat Kidney Tissue Lysate
Lane 3: SMMC Cell Lysate



Anti-Decorin antibody, ABO10639, Western blotting
Lane 1: Rat Liver Tissue Lysate
Lane 2: Rat Lung Tissue Lysate
Lane 3: Rat Spleen Tissue Lysate
Lane 4: SMMC Cell Lysate
Lane 5: SMMC Cell Lysate

Anti-Decorin Antibody - Background

Decorin is a proteoglycan on average 90-140 kilodaltons(kD) in size. The human decorin gene spans more than 38 kb and contains 8 exons and very large introns, 2 of which are 5.4 and more than 13.2 kb. And the human decorin gene is mapped to 12q21.3. It belongs to the small leucine-rich proteoglycan(SLRP) family and consists of a protein core containing leucine repeats with a glycosaminoglycan(GAG) chain consisting of either chondroitin sulfate(CS) or dermatan sulfate(DS). Decorin is a small cellular or pericellular matrix proteoglycan and is closely related in structure to biglycan protein. Decorin and biglycan are thought to be the result of a gene duplication. This protein is a component of connective tissue, binds to type I collagen fibrils, and plays a role in matrix assembly. And it also may play a role in epithelial/mesenchymal interactions during organ development and shaping. Decorin has been shown to have anti-tumorigenic properties in an experimental murine tumor model and is capable of suppressing the growth of various tumor cell lines. There are multiple alternatively spliced transcript variants known for the decorin gene. Mutations in the decorin gene are associated with congenital stromal corneal

dystrophy.