

**Anti-Cytokeratin 19 Antibody**  
**Catalog # ABO10661****Specification**

---

**Anti-Cytokeratin 19 Antibody - Product Information**

Application	WB, IHC, ICC
Primary Accession	<a href="#">P08727</a>
Host	Rabbit
Reactivity	Human
Clonality	Polyclonal
Format	Lyophilized

**Description**

Rabbit IgG polyclonal antibody for Keratin, type I cytoskeletal 19(KRT19) detection. Tested with WB, IHC-P, IHC-F, ICC in Human.

**Reconstitution**

Add 0.2ml of distilled water will yield a concentration of 500ug/ml.

**Anti-Cytokeratin 19 Antibody - Additional Information**

**Gene ID** 3880

**Other Names**

Keratin, type I cytoskeletal 19, Cytokeratin-19, CK-19, Keratin-19, K19, KRT19

**Calculated MW**

44106 MW KDa

**Application Details**

Immunocytochemistry , 0.5-1 µg/ml, Human, -<br>Immunohistochemistry(Frozen Section), 0.5-1 µg/ml, Human, -<br>Immunohistochemistry(Paraffin-embedded Section), 0.5-1 µg/ml, Human, By Heat<br>Western blot, 0.1-0.5 µg/ml, Human<br>

**Tissue Specificity**

Expressed in a defined zone of basal keratinocytes in the deep outer root sheath of hair follicles. Also observed in sweat gland and mammary gland ductal and secretory cells, bile ducts, gastrointestinal tract, bladder urothelium, oral epithelia, esophagus, ectocervical epithelium (at protein level). Expressed in epidermal basal cells, in nipple epidermis and a defined region of the hair follicle. Also seen in a subset of vascular wall cells in both the veins and artery of human umbilical cord, and in umbilical cord vascular smooth muscle. Observed in muscle fibers accumulating in the costameres of myoplasm at the sarcolemma in structures that contain dystrophin and spectrin. .

**Protein Name**

Keratin, type I cytoskeletal 19

**Contents**

Each vial contains 5mg BSA, 0.9mg NaCl, 0.2mg Na<sub>2</sub>HPO<sub>4</sub>, 0.05mg Thimerosal, 0.05mg NaN<sub>3</sub>.

**Immunogen**

A synthetic peptide corresponding to a sequence at the C-terminus of human Cytokeratin 19(379-392aa YRSLLLEGQEDHYNN).

**Purification**

Immunogen affinity purified.

**Cross Reactivity**

No cross reactivity with other proteins

**Storage**

**At -20°C for one year. After reconstitution, at 4°C for one month. It can also be aliquotted and stored frozen at -20°C for a longer time. Avoid repeated freezing and thawing.**

**Anti-Cytokeratin 19 Antibody - Protein Information**

**Name** KRT19

**Function**

Involved in the organization of myofibers. Together with KRT8, helps to link the contractile apparatus to dystrophin at the costameres of striated muscle.

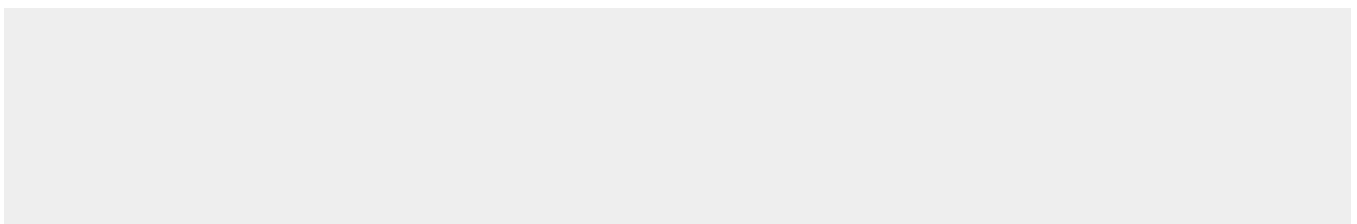
**Tissue Location**

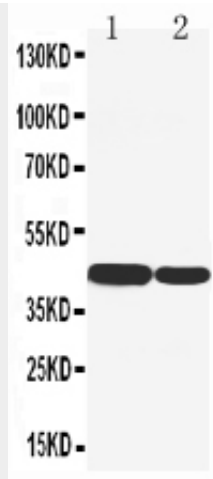
Expressed in a defined zone of basal keratinocytes in the deep outer root sheath of hair follicles. Also observed in sweat gland and mammary gland ductal and secretory cells, bile ducts, gastrointestinal tract, bladder urothelium, oral epithelia, esophagus, ectocervical epithelium (at protein level). Expressed in epidermal basal cells, in nipple epidermis and a defined region of the hair follicle. Also seen in a subset of vascular wall cells in both the veins and artery of human umbilical cord, and in umbilical cord vascular smooth muscle. Observed in muscle fibers accumulating in the costameres of myoplasm at the sarcolemma in structures that contain dystrophin and spectrin.

**Anti-Cytokeratin 19 Antibody - Protocols**

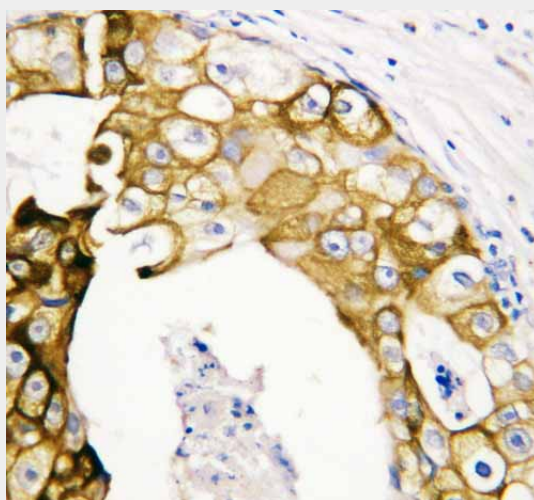
Provided below are standard protocols that you may find useful for product applications.

- [Western Blot](#)
- [Blocking Peptides](#)
- [Dot Blot](#)
- [Immunohistochemistry](#)
- [Immunofluorescence](#)
- [Immunoprecipitation](#)
- [Flow Cytometry](#)
- [Cell Culture](#)

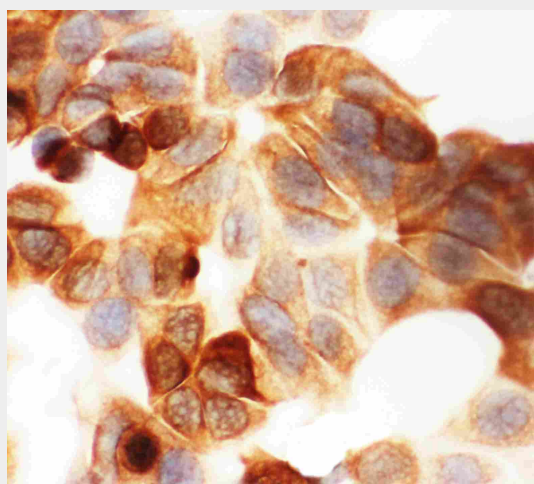
**Anti-Cytokeratin 19 Antibody - Images**



Anti-Cytokeratin 19 antibody, ABO10661, Western blotting Lane 1: HT1080 Cell Lysate Lane 2: COLO320 Cell Lysate



Anti-Cytokeratin 19 antibody, ABO10661, IHC(P) IHC(P): Human Oesophagus Squama Cancer Tissue



Anti-Cytokeratin 19 antibody, ABO10661, ICC ICC: MCF-7 Cell

#### **Anti-Cytokeratin 19 Antibody - Background**

Keratin, type I cytoskeletal 19 is a protein that in humans is encoded by the KRT19 gene. The protein encoded by this gene is a member of the keratin family. It is specifically expressed in the periderm, the transiently superficial layer that envelops the developing epidermis. The type I cytokeratins are clustered in a region of chromosome 17q12-q21. Due to its high sensitivity, KRT19 is the most used marker for the RT-PCR-mediated detection of tumor cells disseminated in lymph nodes, peripheral blood, and bone marrow of breast cancer patients. Keratin 19 is often used together with keratin 8 and keratin 18 to differentiate cells of epithelial origin from hematopoietic cells in tests that enumerate circulating tumor cells in blood.