

Anti-IL-18 Antibody
Catalog # ABO10667**Specification**

Anti-IL-18 Antibody - Product Information

Application	WB
Primary Accession	Q14116
Host	Rabbit
Reactivity	Human
Clonality	Polyclonal
Format	Lyophilized

Description

Rabbit IgG polyclonal antibody for Interleukin-18(IL18) detection. Tested with WB in Human.

Reconstitution

Add 0.2ml of distilled water will yield a concentration of 500ug/ml.

Anti-IL-18 Antibody - Additional Information

Gene ID 3606

Other Names

Interleukin-18, IL-18, Iboctadekin, Interferon gamma-inducing factor, IFN-gamma-inducing factor, Interleukin-1 gamma, IL-1 gamma, IL18, IGIF, IL1F4

Calculated MW

22326 MW KDa

Application Details

Western blot, 0.1-0.5 µg/ml, Human

Subcellular Localization

Secreted.

Protein Name

Interleukin-18

Contents

Each vial contains 5mg BSA, 0.9mg NaCl, 0.2mg Na2HPO4, 0.05mg Thimerosal, 0.05mg NaN3.

Immunogen

A synthetic peptide corresponding to a sequence at the C-terminus of Human IL18(175-193aa KKEDELGDRSIMFTVQNED).

Purification

Immunogen affinity purified.

Cross Reactivity

No cross reactivity with other proteins

Storage

At -20°C for one year. After reconstitution, at 4°C for one month. It can also be aliquotted and stored frozen at -20°C for a longer time. Avoid repeated freezing and thawing.

Sequence Similarities

Belongs to the IL-1 family.

Anti-IL-18 Antibody - Protein Information

Name IL18 ([HGNC:5986](#))

Synonyms IGIF, IL1F4

Function

Pro-inflammatory cytokine primarily involved in epithelial barrier repair, polarized T-helper 1 (Th1) cell and natural killer (NK) cell immune responses (PubMed:[10653850](http://www.uniprot.org/citations/10653850)). Upon binding to IL18R1 and IL18RAP, forms a signaling ternary complex which activates NF-kappa-B, triggering synthesis of inflammatory mediators (PubMed:[14528293](http://www.uniprot.org/citations/14528293), PubMed:[25500532](http://www.uniprot.org/citations/25500532), PubMed:[37993714](http://www.uniprot.org/citations/37993714)). Synergizes with IL12/interleukin-12 to induce IFNG synthesis from T-helper 1 (Th1) cells and natural killer (NK) cells (PubMed:[10653850](http://www.uniprot.org/citations/10653850)). Involved in transduction of inflammation downstream of pyroptosis: its mature form is specifically released in the extracellular milieu by passing through the gasdermin-D (GSDMD) pore (PubMed:[33883744](http://www.uniprot.org/citations/33883744)).

Cellular Location

Cytoplasm, cytosol. Secreted. Note=The precursor is cytosolic (PubMed:33883744). In response to inflammasome-activating signals, cleaved and secreted (PubMed:33883744, PubMed:37993712, PubMed:37993714). Mature form is secreted and released in the extracellular milieu by passing through the gasdermin-D (GSDMD) pore (PubMed:33883744, PubMed:37993714). In contrast, the precursor form is not released, due to the presence of an acidic region that is proteolytically removed by CASP1, CASP4 or CASP5 during maturation (PubMed:33883744, PubMed:37993714). The secretion is dependent on protein unfolding and facilitated by the cargo receptor TMED10 (PubMed:32272059).

Tissue Location

[Isoform 2]: Expressed in ovarian carcinoma but undetectable in normal ovarian epithelial cells. Resistant to proteolytic activation by caspase-1 and -4

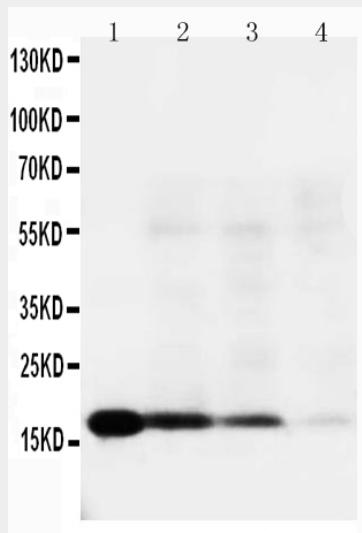
Anti-IL-18 Antibody - Protocols

Provided below are standard protocols that you may find useful for product applications.

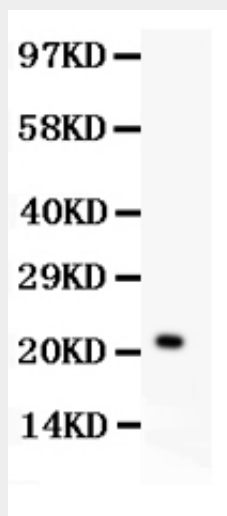
- [Western Blot](#)
- [Blocking Peptides](#)
- [Dot Blot](#)
- [Immunohistochemistry](#)
- [Immunofluorescence](#)

- [Immunoprecipitation](#)
- [Flow Cytometry](#)
- [Cell Culture](#)

Anti-IL-18 Antibody - Images



Anti-IL-18 antibody, ABO10667, Western blotting
Lane 1: Recombinant Human IL-18 Protein 10ng
Lane 2: Recombinant Human IL-18 Protein 5ng
Lane 3: Recombinant Human IL-18 Protein 2.5ng
Lane 4: RAJI Cell Lysate



Western blot analysis of IL-18 expression in HELA whole cell lysates (lane 1). IL-18 at 22KD was detected using rabbit anti- IL-18 Antigen Affinity purified polyclonal antibody (Catalog # ABO10667) at 0.5 μ g/mL. The blot was developed using chemiluminescence (ECL) method .

Anti-IL-18 Antibody - Background

Interleukin-18 also known as IL18 is a protein which in humans is encoded by the IL18 gene. The protein encoded by this gene is a proinflammatory cytokine. IL-18 is a cytokine produced by macrophages and other cells that belongs to the IL-1 superfamily. IL-18 works by binding to the interleukin-18 receptor, and together with IL-12 it induces cell-mediated immunity following infection with microbial products like lipopolysaccharide(LPS). After stimulation with IL-18, natural killer(NK) cells and certain T cells release another important cytokine called interferon-gamma(IFN-gamma) or type II interferon that plays an important role in activating the

macrophages or other cells. The combination of this cytokine and IL12 has been shown to inhibit IL4 dependent IgE and IgG1 production, and enhance IgG2a production in B cells. IL-18 binding protein (IL18BP) can specifically interact with this cytokine, and thus negatively regulate its biological activity. The human interleukin 18 gene IL18 maps to 11q22.2-q22.3, closely linked to the DRD2 gene locus and distinct from mapped IDDM loci.