

Anti-P-Cadherin Antibody
Catalog # ABO10687**Specification**

Anti-P-Cadherin Antibody - Product Information

Application	WB, IHC, ICC
Primary Accession	P22223
Host	Rabbit
Reactivity	Human
Clonality	Polyclonal
Format	Lyophilized

Description

Rabbit IgG polyclonal antibody for Cadherin-3(CDH3) detection. Tested with WB, IHC-P, ICC in Human.

Reconstitution

Add 0.2ml of distilled water will yield a concentration of 500ug/ml.

Anti-P-Cadherin Antibody - Additional Information

Gene ID 1001

Other Names

Cadherin-3, Placental cadherin, P-cadherin, CDH3, CDHP

Calculated MW

91418 MW KDa

Application Details

Immunocytochemistry , 0.5-1 µg/ml, Human, -
Immunohistochemistry(Paraffin-embedded Section), 0.5-1 µg/ml, Human, By Heat
Western blot, 0.1-0.5 µg/ml, Human

Subcellular Localization

Cell membrane; Single-pass type I membrane protein.

Tissue Specificity

Expressed in some normal epithelial tissues and in some carcinoma cell lines. .

Protein Name

Cadherin-3

Contents

Each vial contains 5mg BSA, 0.9mg NaCl, 0.2mg Na₂HPO₄, 0.05mg Thimerosal, 0.05mg NaN₃.

Immunogen

A synthetic peptide corresponding to a sequence in the middle region of human P cadherin(612-626aa QDTYDVHLSLSDHGN), different from the mouse and rat sequences by one amino acid.

Purification

Immunogen affinity purified.

Cross Reactivity

No cross reactivity with other proteins

Storage

At -20°C for one year. After reconstitution, at 4°C for one month. It can also be aliquotted and stored frozen at -20°C for a longer time. Avoid repeated freezing and thawing.

Sequence Similarities

Contains 5 cadherin domains.

Anti-P-Cadherin Antibody - Protein Information

Name CDH3

Synonyms CDHP

Function

Cadherins are calcium-dependent cell adhesion proteins. They preferentially interact with themselves in a homophilic manner in connecting cells; cadherins may thus contribute to the sorting of heterogeneous cell types.

Cellular Location

Cell membrane; Single-pass type I membrane protein

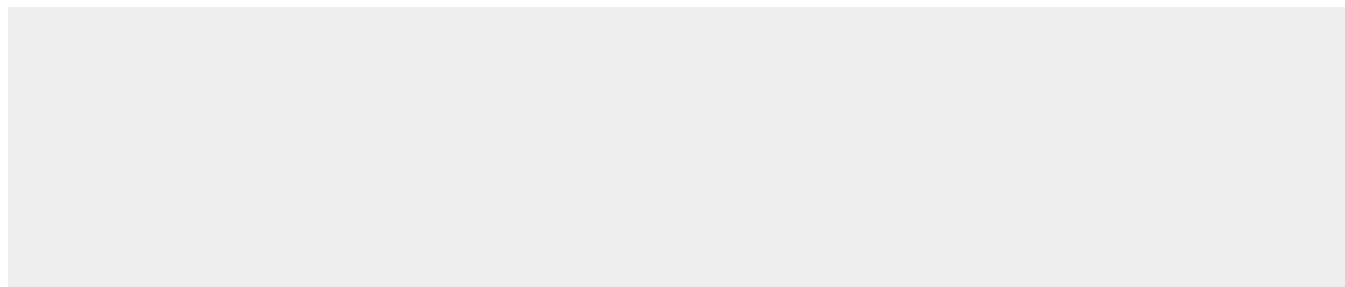
Tissue Location

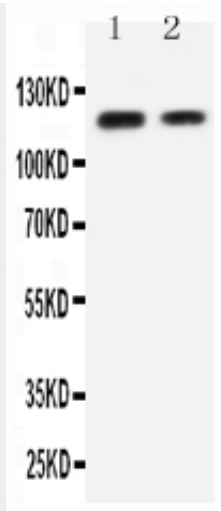
Expressed in some normal epithelial tissues and in some carcinoma cell lines.

Anti-P-Cadherin Antibody - Protocols

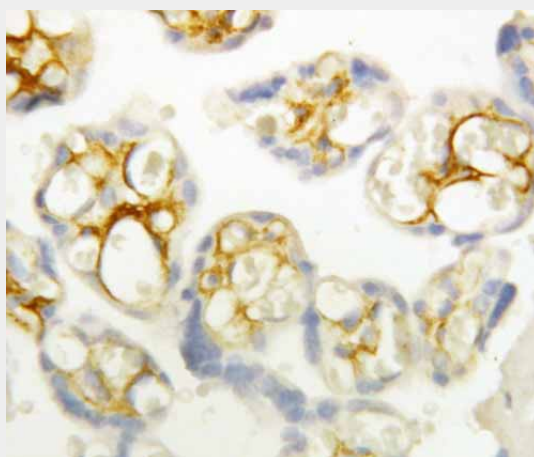
Provided below are standard protocols that you may find useful for product applications.

- [Western Blot](#)
- [Blocking Peptides](#)
- [Dot Blot](#)
- [Immunohistochemistry](#)
- [Immunofluorescence](#)
- [Immunoprecipitation](#)
- [Flow Cytometry](#)
- [Cell Culture](#)

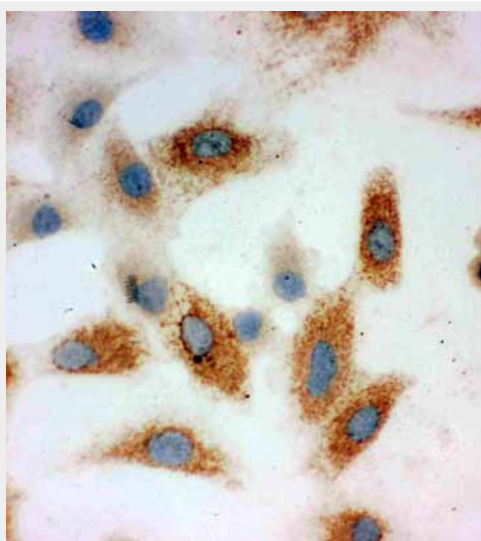
Anti-P-Cadherin Antibody - Images



Anti-P cadherin antibody, ABO10687, Western blotting
Lane 1: Recombinant Human P-Cadherin Protein 10ng
Lane 2: Recombinant Human P-Cadherin Protein 5ng



Anti-P cadherin antibody, ABO10687, IHC(P)
IHC(P): Human Placenta Tissue



Anti-P cadherin antibody, ABO10687, ICC
ICC: A549 Cell

Anti-P-Cadherin Antibody - Background

Cadherins, such as CDH3, are integral membrane glycoproteins responsible for calcium-dependent cell-cell adhesion. Cadherin-3 is a protein that in humans is encoded by the CDH3 gene. This gene is a classical cadherin from the cadherin superfamily. The encoded protein is a calcium-dependent cell-cell adhesion glycoprotein composed of five extracellular cadherin repeats, a transmembrane region and a highly conserved cytoplasmic tail. This gene is located in a six-cadherin cluster in a region on the long arm of chromosome 16 that is involved in loss of heterozygosity events in breast and prostate cancer. In addition, aberrant expression of this protein is observed in cervical adenocarcinomas. Mutations in this gene have been associated with congenital hypotrichosis with juvenile macular dystrophy.