

Anti-FGF7/KGF Antibody
Catalog # ABO10695**Specification**

Anti-FGF7/KGF Antibody - Product Information

Application	WB, IHC
Primary Accession	P21781
Host	Rabbit
Reactivity	Human, Mouse, Rat
Clonality	Polyclonal
Format	Lyophilized

Description

Rabbit IgG polyclonal antibody for Fibroblast growth factor 7(FGF7) detection. Tested with WB, IHC-P in Human;Mouse;Rat.

Reconstitution

Add 0.2ml of distilled water will yield a concentration of 500ug/ml.

Anti-FGF7/KGF Antibody - Additional Information

Gene ID 2252

Other Names

Fibroblast growth factor 7, FGF-7, Heparin-binding growth factor 7, HBGF-7, Keratinocyte growth factor, FGF7, KGF

Calculated MW

22509 MW KDa

Application Details

Immunohistochemistry(Paraffin-embedded Section), 0.5-1 µg/ml, Human, Mouse, Rat, By Heat
Western blot, 0.1-0.5 µg/ml, Human, Mouse, Rat

Subcellular Localization

Secreted.

Tissue Specificity

Epithelial cell.

Protein Name

Fibroblast growth factor 7(FGF-7)

Contents

Each vial contains 5mg BSA, 0.9mg NaCl, 0.2mg Na₂HPO₄, 0.05mg Thimerosal, 0.05mg NaN₃.

Immunogen

A synthetic peptide corresponding to a sequence at the N-terminus of human KGF(51-65aa RHTRSYDYMEGGDIR), identical to the related mouse and rat sequences.

Purification

Immunogen affinity purified.

Cross Reactivity

No cross reactivity with other proteins

Storage

At -20°C for one year. After reconstitution, at 4°C for one month. It can also be aliquotted and stored frozen at -20°C for a longer time. Avoid repeated freezing and thawing.

Anti-FGF7/KGF Antibody - Protein Information

Name FGF7

Synonyms KGF

Function

Plays an important role in the regulation of embryonic development, cell proliferation and cell differentiation. Required for normal branching morphogenesis. Growth factor active on keratinocytes. Possible major paracrine effector of normal epithelial cell proliferation.

Cellular Location

Secreted.

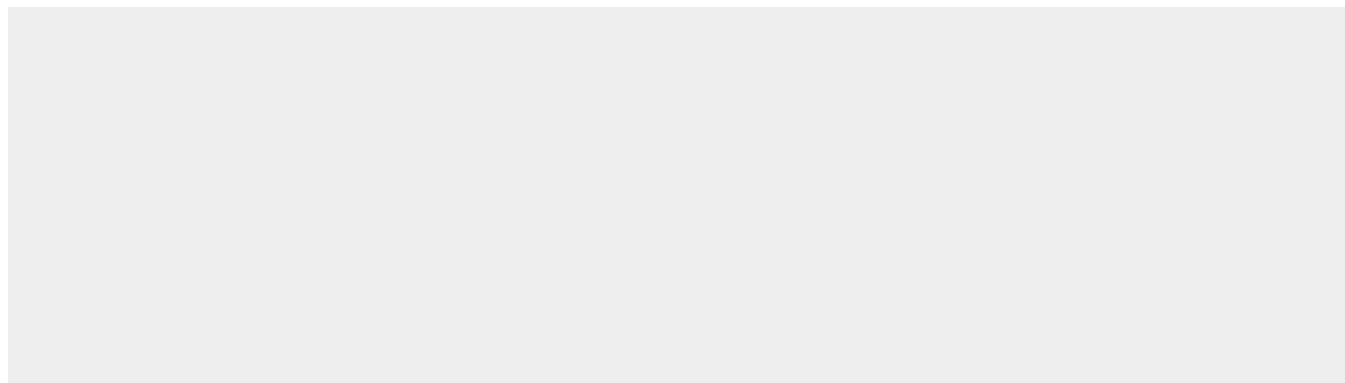
Tissue Location

Epithelial cell.

Anti-FGF7/KGF Antibody - Protocols

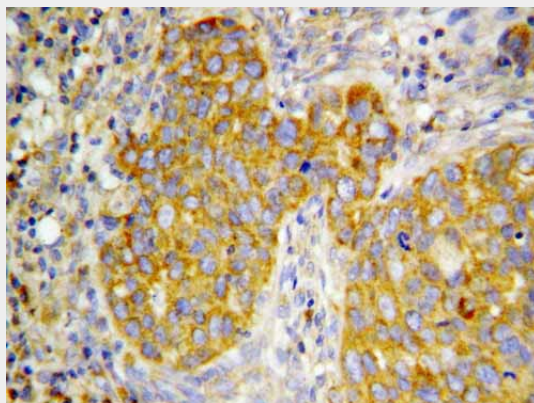
Provided below are standard protocols that you may find useful for product applications.

- [Western Blot](#)
- [Blocking Peptides](#)
- [Dot Blot](#)
- [Immunohistochemistry](#)
- [Immunofluorescence](#)
- [Immunoprecipitation](#)
- [Flow Cytometry](#)
- [Cell Culture](#)

Anti-FGF7/KGF Antibody - Images



Anti-KGF antibody, ABO10695, Western blotting
Lane 1: Recombinant Human FGF7 Protein 10ng
Lane 2: Recombinant Human FGF7 Protein 5ng
Lane 3: Recombinant Human FGF7 Protein 2.5ng



Anti-KGF antibody, ABO10695, IHC(P)
IHC(P): Rat Lung Cancer Tissue

Anti-FGF7/KGF Antibody - Background

Keratinocyte growth factor is a protein that in humans is encoded by the FGF7 gene. The protein encoded by this gene is a member of the fibroblast growth factor (FGF) family. FGF family members possess broad mitogenic and cell survival activities, and are involved in a variety of biological processes, including embryonic development, cell growth, morphogenesis, tissue repair, tumor growth and invasion. This protein is a potent epithelial cell-specific growth factor, whose mitogenic activity is predominantly exhibited in keratinocytes but not in fibroblasts and endothelial cells. Studies of mouse and rat homologs of this gene implicated roles in morphogenesis of epithelium, reepithelialization of wounds, hair development and early lung organogenesis.