

Anti-Bcl3 Antibody
Catalog # ABO10857**Specification**

Anti-Bcl3 Antibody - Product Information

Application	WB, IHC
Primary Accession	P20749
Host	Rabbit
Reactivity	Human, Mouse, Rat
Clonality	Polyclonal
Format	Lyophilized

Description

Rabbit IgG polyclonal antibody for B-cell lymphoma 3 protein(BCL3) detection. Tested with WB, IHC-P in Human;Mouse;Rat.

Reconstitution

Add 0.2ml of distilled water will yield a concentration of 500ug/ml.

Anti-Bcl3 Antibody - Additional Information

Gene ID 602

Other Names

B-cell lymphoma 3 protein, BCL-3, Proto-oncogene BCL3, BCL3, BCL4, D19S37

Calculated MW

47584 MW KDa

Application Details

Immunohistochemistry(Paraffin-embedded Section), 0.5-1 µg/ml, Human, Rat, Mouse, By Heat
Western blot, 0.1-0.5 µg/ml, Human, Rat, Mouse

Subcellular Localization

Nucleus. Cytoplasm . Cytoplasm, perinuclear region . Ubiquitination via 'Lys- 63'-linked ubiquitin chains is required for nuclear accumulation. .

Protein Name

B-cell lymphoma 3 protein(BCL-3)

Contents

Each vial contains 5mg BSA, 0.9mg NaCl, 0.2mg Na2HPO4, 0.05mg Thimerosal, 0.05mg NaN3.

Immunogen

A synthetic peptide corresponding to a sequence in the middle region of human Bcl3(199-216aa MALDRHGQTAAHLACEHR), different from the related rat and mouse sequences by one amino acid.

Purification

Immunogen affinity purified.

Cross Reactivity

No cross reactivity with other proteins

Storage

At -20°C for one year. After reconstitution, at 4°C for one month. It can also be aliquotted and stored frozen at -20°C for a longer time. Avoid repeated freezing and thawing.

Sequence Similarities

Contains 7 ANK repeats.

Anti-Bcl3 Antibody - Protein Information

Name BCL3

Synonyms BCL4, D19S37

Function

Contributes to the regulation of transcriptional activation of NF-kappa-B target genes. In the cytoplasm, inhibits the nuclear translocation of the NF-kappa-B p50 subunit. In the nucleus, acts as transcriptional activator that promotes transcription of NF-kappa-B target genes. Contributes to the regulation of cell proliferation (By similarity).

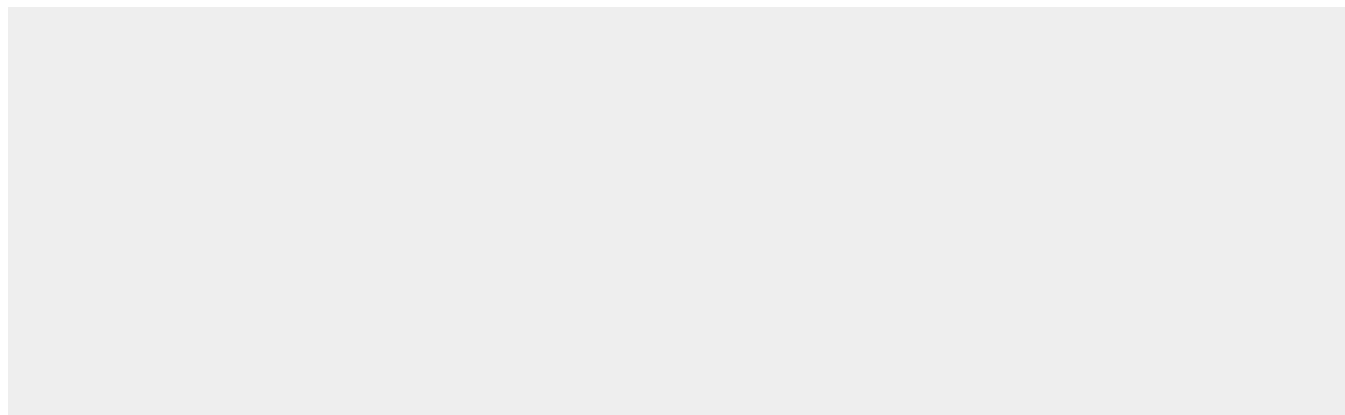
Cellular Location

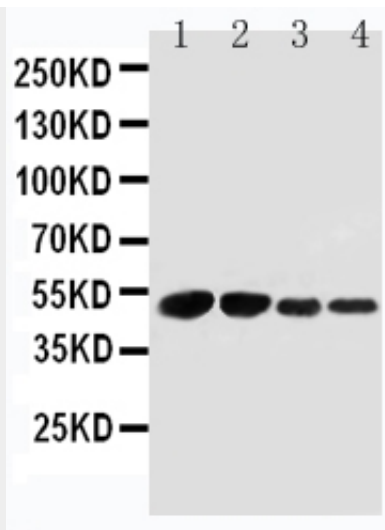
Nucleus. Cytoplasm. Cytoplasm, perinuclear region. Note=Ubiquitination via 'Lys-63'- linked ubiquitin chains is required for nuclear accumulation

Anti-Bcl3 Antibody - Protocols

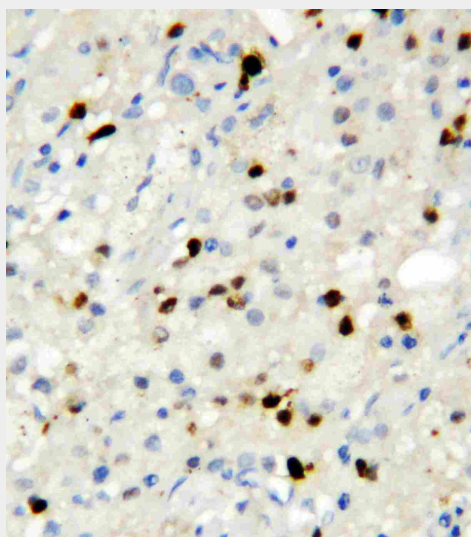
Provided below are standard protocols that you may find useful for product applications.

- [Western Blot](#)
- [Blocking Peptides](#)
- [Dot Blot](#)
- [Immunohistochemistry](#)
- [Immunofluorescence](#)
- [Immunoprecipitation](#)
- [Flow Cytometry](#)
- [Cell Culture](#)

Anti-Bcl3 Antibody - Images



Anti-Bcl3 antibody, ABO10857, Western blotting
Lane 1: JURKAT Cell Lysate
Lane 2: MM231 Cell Lysate
Lane 3: RAJI Cell Lysate
Lane 4: CEM Cell Lysate



Anti-Bcl3 antibody, ABO10857, IHC(P)
IHC(P): Human Lung Cancer Tissue

Anti-Bcl3 Antibody - Background

B-cell lymphoma 3-encoded protein is a protein that in humans is encoded by the BCL3 gene. This gene is a proto-oncogene candidate. It is identified by its translocation into the immunoglobulin alpha-locus in some cases of B-cell leukemia. The protein encoded by this gene contains seven ankyrin repeats, which are most closely related to those found in I kappa B proteins. The BCL3 gene is mapped to human chromosome 19. This protein functions as a transcriptional coactivator that activates through its association with NF-kappa B homodimers. The expression of this gene can be induced by NF-kappa B, which forms a part of the autoregulatory loop that controls the nuclear residence of p50 NF-kappa B.