

Anti-CTBP2 Antibody
Catalog # ABO10872**Specification**

Anti-CTBP2 Antibody - Product Information

| | |
|-------------------|------------------------|
| Application | WB, IHC, ICC |
| Primary Accession | P56545 |
| Host | Rabbit |
| Reactivity | Human, Mouse, Rat |
| Clonality | Polyclonal |
| Format | Lyophilized |

Description

Rabbit IgG polyclonal antibody for C-terminal-binding protein 2(CTBP2) detection. Tested with WB, IHC-P, IHC-F, ICC in Human;Mouse;Rat.

Reconstitution

Add 0.2ml of distilled water will yield a concentration of 500ug/ml.

Anti-CTBP2 Antibody - Additional Information

Gene ID 1488

Other Names

C-terminal-binding protein 2, CtBP2, CTBP2

Calculated MW

48945 MW KDa

Application Details

Immunocytochemistry , 0.5-1 µg/ml, Human, -
Immunohistochemistry(Frozen Section), 0.5-1 µg/ml, Mouse, Rat, Human
Immunohistochemistry(Paraffin-embedded Section), 0.5-1 µg/ml, Human, Mouse, Rat, By Heat
Western blot, 0.1-0.5 µg/ml, Human, Rat, Mouse

Subcellular Localization

Nucleus . Cell junction, synapse .

Tissue Specificity

Ubiquitous. Highest levels in heart, skeletal muscle, and pancreas.

Protein Name

C-terminal-binding protein 2(CtBP2)

Contents

Each vial contains 5mg BSA, 0.9mg NaCl, 0.2mg Na₂HPO₄, 0.05mg Thimerosal, 0.05mg NaN₃.

Immunogen

A synthetic peptide corresponding to a sequence at the C-terminus of human CTBP2(429-445aa PNQPTKHGDNREHPNEQ), identical to the related rat and mouse sequences.

Purification

Immunogen affinity purified.

Cross Reactivity

No cross reactivity with other proteins

Storage

At -20°C for one year. After reconstitution, at 4°C for one month. It can also be aliquotted and stored frozen at -20°C for a longer time. Avoid repeated freezing and thawing.

Anti-CTBP2 Antibody - Protein Information**Name** CTBP2**Function**

Corepressor targeting diverse transcription regulators. Functions in brown adipose tissue (BAT) differentiation (By similarity).

Cellular Location

Nucleus. Synapse.

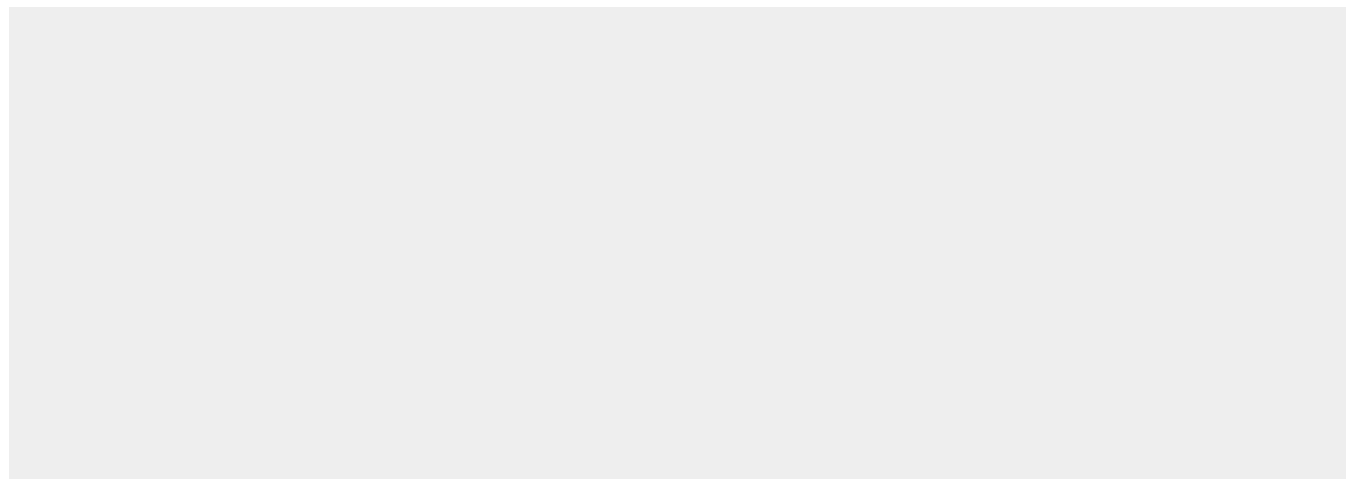
Tissue Location

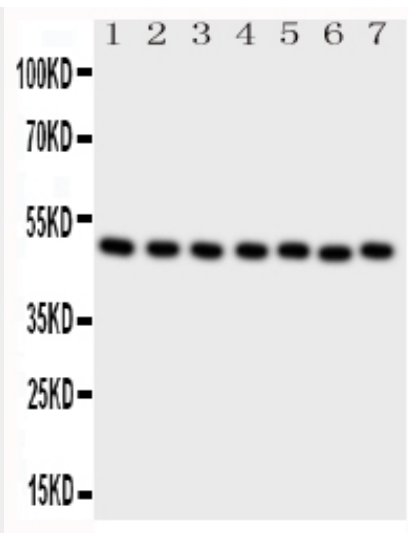
Ubiquitous. Highest levels in heart, skeletal muscle, and pancreas

Anti-CTBP2 Antibody - Protocols

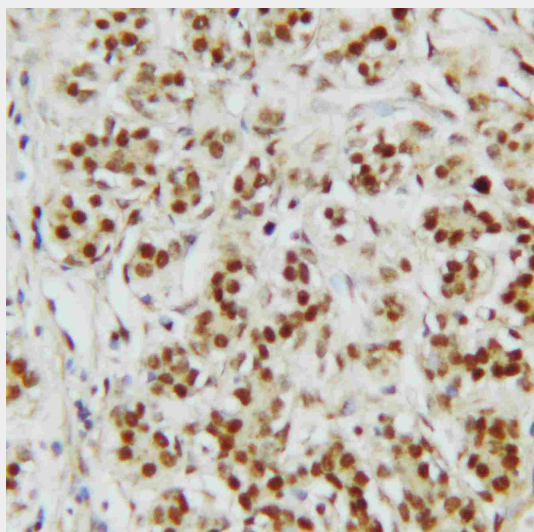
Provided below are standard protocols that you may find useful for product applications.

- [Western Blot](#)
- [Blocking Peptides](#)
- [Dot Blot](#)
- [Immunohistochemistry](#)
- [Immunofluorescence](#)
- [Immunoprecipitation](#)
- [Flow Cytometry](#)
- [Cell Culture](#)

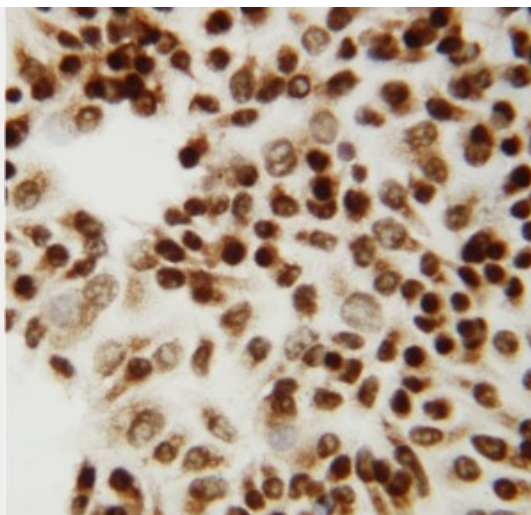
Anti-CTBP2 Antibody - Images



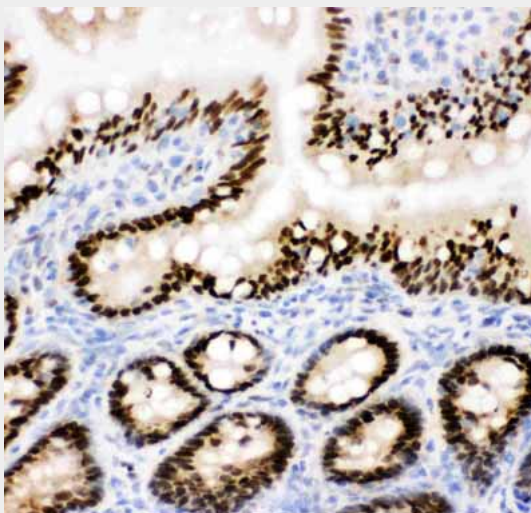
Anti-CTBP2 antibody, ABO10872, Western blotting All lanes: Anti CTBP2 (ABO10872) at 0.5ug/ml
Lane 1: Rat Brain Tissue Lysate at 50ug
Lane 2: Rat Spleen Tissue Lysate at 50ug
Lane 3: HELA Whole Cell Lysate at 40ug
Lane 4: 293T Whole Cell Lysate at 40ug
Lane 5: COLO320 Whole Cell Lysate at 40ug
Lane 6: U87 Whole Cell Lysate at 40ug
Lane 7: SW620 Whole Cell Lysate at 40ug
Predicted bind size: 49KD
Observed bind size: 49KD



Anti-CTBP2 antibody, ABO10872, IHC(P) IHC(P): Human Mammary Cancer Tissue



Anti-CTBP2 antibody, ABO10872, ICCICC: HELA Cell



Anti-CTBP2 antibody, ABO10872, IHC(F)IHC(F): Rat Intestine Tissue

Anti-CTBP2 Antibody - Background

The E1a region of group C adenoviruses encodes 2 nearly identical proteins that are largely responsible for the oncogenic properties of adenoviruses. The CTBP1 protein binds to the C-terminal half of these E1A proteins. It's predicted that CTBP2 is a 445-amino acid protein and it is 72% identical to CTBP1. The CTBP2 gene is mapped to chromosome 10q26.13. CTBP2 is a mammalian corepressor that targets diverse transcriptional regulators. It bounds the short medial portion of delta-EF1 containing the PLDLSL motif and it enhances transrepression activity of delta-EF1.