

Anti-KIM1 Antibody
Catalog # ABO10938**Specification**

Anti-KIM1 Antibody - Product Information

Application	WB, IHC, ICC
Primary Accession	Q96D42
Host	Rabbit
Reactivity	Human
Clonality	Polyclonal
Format	Lyophilized

Description

Rabbit IgG polyclonal antibody for Hepatitis A virus cellular receptor 1(HAVCR1) detection. Tested with WB, IHC-P, ICC in Human.

Reconstitution

Add 0.2ml of distilled water will yield a concentration of 500ug/ml.

Anti-KIM1 Antibody - Additional Information

Gene ID 26762

Other Names

Hepatitis A virus cellular receptor 1, HAVcr-1, Kidney injury molecule 1, KIM-1, T-cell immunoglobulin and mucin domain-containing protein 1, TIMD-1, T-cell immunoglobulin mucin receptor 1, TIM, TIM-1, T-cell membrane protein 1, HAVCR1, KIM1, TIM1, TIMD1

Calculated MW

38720 MW KDa

Application Details

Immunocytochemistry , 0.5-1 µg/ml, Human, -
Immunohistochemistry(Paraffin-embedded Section), 0.5-1 µg/ml, Human, By Heat
Western blot, 0.1-0.5 µg/ml, Human

Subcellular Localization

Membrane ; Single-pass type I membrane protein .

Tissue Specificity

Widely expressed, with highest levels in kidney and testis. Expressed by activated CD4+ T-cells during the development of helper T-cells responses. .

Protein Name

Hepatitis A virus cellular receptor 1(HAVcr-1)

Contents

Each vial contains 5mg BSA, 0.9mg NaCl, 0.2mg Na2HPO4, 0.05mg Thimerosal, 0.05mg NaN3.

Immunogen

A synthetic peptide corresponding to a sequence at the C-terminus of human TIM 1(332-348aa

IKALQNAVEKEVQAEDN).

Purification

Immunogen affinity purified.

Cross Reactivity

No cross reactivity with other proteins

Storage

At -20°C for one year. After reconstitution, at 4°C for one month. It can also be aliquotted and stored frozen at -20°C for a longer time. Avoid repeated freezing and thawing.

Sequence Similarities

Belongs to the immunoglobulin superfamily. TIM family.

Anti-KIM1 Antibody - Protein Information

Name HAVCR1

Synonyms KIM1, TIM1, TIMD1

Function

Phosphatidylserine receptor that plays an important functional role in regulatory B-cells homeostasis including generation, expansion and suppressor functions (By similarity). As P-selectin/SELPLG ligand, plays a specialized role in activated but not naive T-cell trafficking during inflammatory responses (PubMed: [24703780](http://www.uniprot.org/citations/24703780)). Controls thereby T-cell accumulation in the inflamed central nervous system (CNS) and the induction of autoimmune disease (PubMed: [24703780](http://www.uniprot.org/citations/24703780)). Regulates also expression of various anti-inflammatory cytokines and co-inhibitory ligands including IL10 (By similarity). Acts as a regulator of T-cell proliferation (By similarity). May play a role in kidney injury and repair (PubMed: [17471468](http://www.uniprot.org/citations/17471468)).

Cellular Location

Cell membrane; Single-pass type I membrane protein

Tissue Location

Widely expressed, with highest levels in kidney and testis. Expressed by activated CD4+ T-cells during the development of helper T-cells responses.

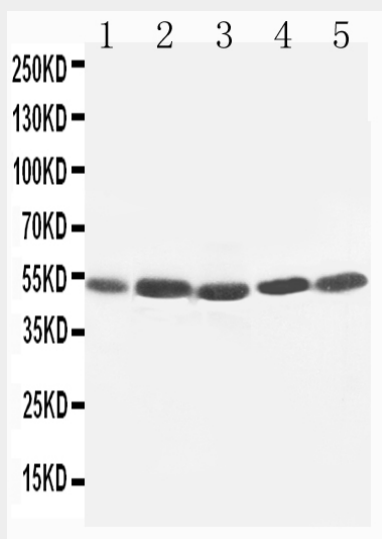
Anti-KIM1 Antibody - Protocols

Provided below are standard protocols that you may find useful for product applications.

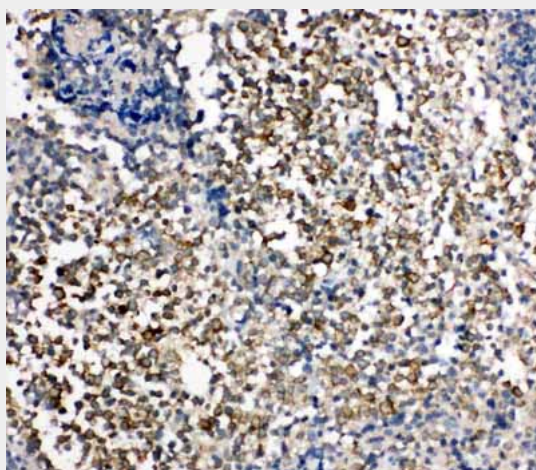
- [Western Blot](#)
- [Blocking Peptides](#)
- [Dot Blot](#)
- [Immunohistochemistry](#)
- [Immunofluorescence](#)
- [Immunoprecipitation](#)
- [Flow Cytometry](#)

- [Cell Culture](#)

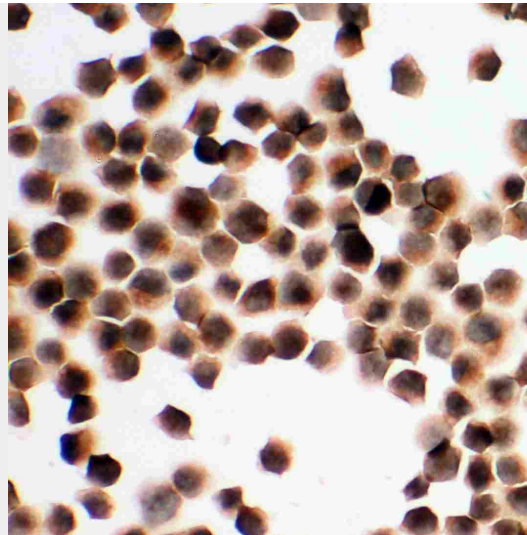
Anti-KIM1 Antibody - Images



Anti-TIM 1 antibody, ABO10938, Western blotting
Lane 1: SMMC Cell Lysate Lane 2: HELA Cell Lysate
Lane 3: PANC Cell Lysate Lane 4: M231 Cell Lysate
Lane 5: M453 Cell Lysate



Anti-TIM 1 antibody, ABO10938, IHC(P)IHC(P): Human Tonsil Tissue



Anti-TIM 1 antibody, ABO10938, ICCICC: K562 Cell

Anti-KIM1 Antibody - Background

KIM1(KIDNEY INJURY MOLECULE 1), also known as HAVCR1, HAVCR or TIM1, is a protein that in humans is encoded by the KIM1 gene. The KIM1 gene is mapped to 5q33.3. Biochemical, mutational, and cell adhesion analyses confirm that Tim1 is capable of homophilic Tim-Tim interactions. The features identified in murine KIM1 is conserved in human KIM1. The KIM1 protein is indeed a receptor for the virus through the infection of canine osteogenic sarcoma cells expressing HAVCR1 with HAV. Using a monoclonal antibody to mouse Tim1, Tim1 is expressed after activation of naive T cells and on T cells differentiated in Th2-polarizing conditions. Ectopic expression of KIM1 during mouse T-cell differentiation leads to production of the Th2-type cytokine IL4, but not the Th1-type cytokine IFN γ . KIM1-expressing epithelial cells internalized apoptotic bodies, and Kim1 is directly responsible for phagocytosis in cultured primary rat tubule epithelial cells and in porcine and canine epithelial cell lines.