

**Anti-P-Selectin Antibody**  
**Catalog # ABO11025****Specification**

---

**Anti-P-Selectin Antibody - Product Information**

Application	WB, IHC
Primary Accession	<a href="#">P16109</a>
Host	Rabbit
Reactivity	Human
Clonality	Polyclonal
Format	Lyophilized

**Description**

Rabbit IgG polyclonal antibody for P-selectin(SELP) detection. Tested with WB, IHC-P in Human.

**Reconstitution**

Add 0.2ml of distilled water will yield a concentration of 500ug/ml.

**Anti-P-Selectin Antibody - Additional Information**

**Gene ID** 6403

**Other Names**

P-selectin, CD62 antigen-like family member P, Granule membrane protein 140, GMP-140, Leukocyte-endothelial cell adhesion molecule 3, LECAM3, Platelet activation dependent granule-external membrane protein, PADGEM, CD62P, SELP, GMRP, GRMP

**Calculated MW**

90834 MW KDa

**Application Details**

Immunohistochemistry(Paraffin-embedded Section), 0.5-1 µg/ml, Human, By Heat<br>Western blot, 0.1-0.5 µg/ml, Human<br>

**Subcellular Localization**

Membrane; Single-pass type I membrane protein.

**Tissue Specificity**

Stored in the alpha-granules of platelets and Weibel-Palade bodies of endothelial cells. Upon cell activation by agonists, P-selectin is transported rapidly to the cell surface.

**Protein Name**

P-selectin

**Contents**

Each vial contains 5mg BSA, 0.9mg NaCl, 0.2mg Na<sub>2</sub>HPO<sub>4</sub>, 0.05mg Thimerosal, 0.05mg NaN<sub>3</sub>.

**Immunogen**

A synthetic peptide corresponding to a sequence at the N-terminus of human CD62P(49-66aa KAYSWNISRKYCQNRYTD).

**Purification**

Immunogen affinity purified.

**Cross Reactivity**

No cross reactivity with other proteins

**Storage**

**At -20°C for one year. After reconstitution, at 4°C for one month. It can also be aliquotted and stored frozen at -20°C for a longer time. Avoid repeated freezing and thawing.**

**Sequence Similarities**

Belongs to the selectin/LECAM family.

**Anti-P-Selectin Antibody - Protein Information**

**Name** SELP

**Synonyms** GMRP, GRMP

**Function**

Ca(2+)-dependent receptor for myeloid cells that binds to carbohydrates on neutrophils and monocytes. Mediates the interaction of activated endothelial cells or platelets with leukocytes. The ligand recognized is sialyl-Lewis X. Mediates rapid rolling of leukocyte rolling over vascular surfaces during the initial steps in inflammation through interaction with SELPLG.

**Cellular Location**

Cell membrane; Single-pass type I membrane protein

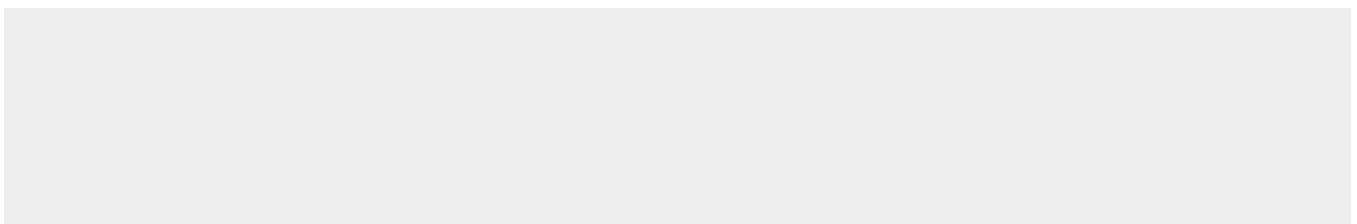
**Tissue Location**

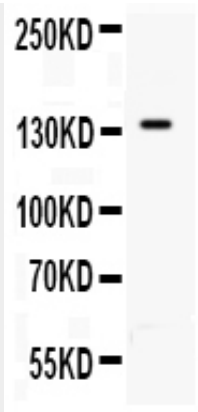
Stored in the alpha-granules of platelets and Weibel-Palade bodies of endothelial cells. Upon cell activation by agonists, P-selectin is transported rapidly to the cell surface

**Anti-P-Selectin Antibody - Protocols**

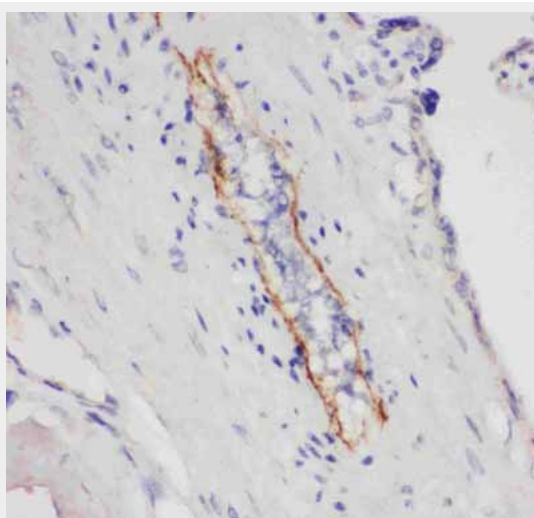
Provided below are standard protocols that you may find useful for product applications.

- [Western Blot](#)
- [Blocking Peptides](#)
- [Dot Blot](#)
- [Immunohistochemistry](#)
- [Immunofluorescence](#)
- [Immunoprecipitation](#)
- [Flow Cytometry](#)
- [Cell Culture](#)

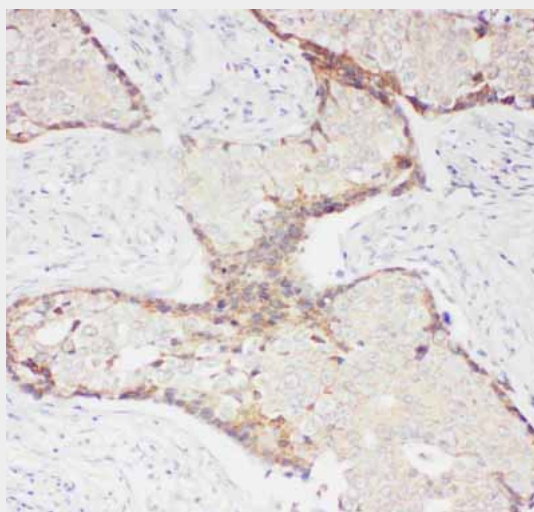
**Anti-P-Selectin Antibody - Images**



Anti- CD62P antibody, ABO11025, Western blotting All lanes: Anti CD62P (ABO11025) at 0.5ug/ml WB: PANC Whole Cell Lysate at 40ug Predicted bind size: 91KD Observed bind size: 140KD



Anti- CD62P antibody, ABO11025, IHC(P) IHC(P): Human Placenta Tissue



Anti- CD62P antibody, ABO11025, IHC(P) IHC(P): Human Mammary Cancer Tissue

#### Anti-P-Selectin Antibody - Background

P-Selectin, also called CD62, GRMP, GMP140 is a 140-kD adhesion molecule, expressed at the surface of activated cells, that mediates the interaction of activated endothelial cells or platelets

with leukocytes. The P-Selectin gene is mapped on 1q24.2. P-selectin plays an essential role in the initial recruitment of leukocytes (white blood cells) to the site of injury during inflammation. P-selectin is also very important in the recruitment and aggregation of platelets at areas of vascular injury. In quiescent platelet, P-selectin is located on the inner wall of alpha-granules. Sorting nexin-17 interacts with the cytosolic domain of P-selectin and suggested that SNX17 may function in the intracellular trafficking of P-selectin. P-selectin expression was found to be significantly and positively correlated with carotid artery stiffness and wall thickness, and the percentage of P-selectin-positive platelets was significantly higher in patients with carotid plaque.