

Anti-NPM2 Antibody
Catalog # ABO11299**Specification**

Anti-NPM2 Antibody - Product Information

Application	WB
Primary Accession	Q86SE8
Host	Rabbit
Reactivity	Human
Clonality	Polyclonal
Format	Lyophilized

Description

Rabbit IgG polyclonal antibody for Nucleoplasmin-2(NPM2) detection. Tested with WB in Human.

Reconstitution

Add 0.2ml of distilled water will yield a concentration of 500ug/ml.

Anti-NPM2 Antibody - Additional Information

Gene ID 10361

Other Names

Nucleoplasmin-2, NPM2

Calculated MW

24152 MW KDa

Application Details

Western blot, 0.1-0.5 µg/ml, Human

Subcellular Localization

Nucleus . Found in the oocyte nucleus before nuclear membrane breakdown, after which it is redistributed to the cytoplasm. .

Protein Name

Nucleoplasmin-2

Contents

Each vial contains 5mg BSA, 0.9mg NaCl, 0.2mg Na₂HPO₄, 0.05mg Thimerosal, 0.05mg NaN₃.

Immunogen

A synthetic peptide corresponding to a sequence at the N-terminus of human NPM2(25-43aa QERRTWTFRPQLEGKQSCR).

Purification

Immunogen affinity purified.

Cross Reactivity

No cross reactivity with other proteins

Storage

At -20°C for one year. After reconstitution, at 4°C for one month. It can also be aliquotted and stored frozen at -20°C for a longer time. Avoid repeated freezing and thawing.

Anti-NPM2 Antibody - Protein Information

Name NPM2

Function

Core histones chaperone involved in chromatin reprogramming, specially during fertilization and early embryonic development. Probably involved in sperm DNA decondensation during fertilization.

Cellular Location

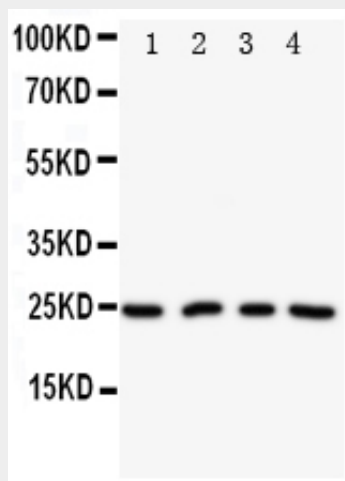
Nucleus. Note=Found in the oocyte nucleus before nuclear membrane breakdown, after which it is redistributed to the cytoplasm.

Anti-NPM2 Antibody - Protocols

Provided below are standard protocols that you may find useful for product applications.

- [Western Blot](#)
- [Blocking Peptides](#)
- [Dot Blot](#)
- [Immunohistochemistry](#)
- [Immunofluorescence](#)
- [Immunoprecipitation](#)
- [Flow Cytometry](#)
- [Cell Culture](#)

Anti-NPM2 Antibody - Images



Anti-NPM2 antibody, ABO11299, Western blotting
Lane 1: HELA Cell Lysate
Lane 2: U87 Cell Lysate
Lane 3: A549 Cell Lysate
Lane 4: SMMC Cell Lysate

Anti-NPM2 Antibody - Background

NPM2(Nucleophosmin/Nucleoplasmin Family Member 2), Burns et al.(2003) mapped the mouse Npm2 gene to chromosome 14. Burns et al.(2003) found that female Npm2-null mice showed defects in preimplantation embryo development, with abnormalities in oocyte and early embryonic nuclei.