

**Anti-Claudin 6 Antibody**  
**Catalog # ABO11326****Specification**

---

**Anti-Claudin 6 Antibody - Product Information**

Application	WB
Primary Accession	<a href="#">P56747</a>
Host	Rabbit
Reactivity	Human
Clonality	Polyclonal
Format	Lyophilized

**Description**

Rabbit IgG polyclonal antibody for Claudin-6(CLDN6) detection. Tested with WB in Human.

**Reconstitution**

Add 0.2ml of distilled water will yield a concentration of 500ug/ml.

**Anti-Claudin 6 Antibody - Additional Information**

**Gene ID** 9074

**Other Names**

Claudin-6, Skullin, CLDN6

**Calculated MW**

23292 MW KDa

**Application Details**

Western blot, 0.1-0.5 µg/ml, Human<br>

**Subcellular Localization**

Cell junction, tight junction . Cell membrane ; Multi-pass membrane protein .

**Tissue Specificity**

Expressed in the liver, in peripheral blood mononuclear cells and hepatocarcinoma cell lines. .

**Protein Name**

Claudin-6

**Contents**

Each vial contains 5mg BSA, 0.9mg NaCl, 0.2mg Na<sub>2</sub>HPO<sub>4</sub>, 0.05mg Thimerosal, 0.05mg NaN<sub>3</sub>.

**Immunogen**

A synthetic peptide corresponding to a sequence at the C-terminus of human Claudin 6(204-220aa APAISRGPSYPTKNYV).

**Purification**

Immunogen affinity purified.

**Cross Reactivity**

No cross reactivity with other proteins

**Storage**

**At -20°C for one year. After reconstitution, at 4°C for one month. It can also be aliquotted and stored frozen at -20°C for a longer time. Avoid repeated freezing and thawing.**

**Sequence Similarities**

Belongs to the claudin family.

**Anti-Claudin 6 Antibody - Protein Information**

**Name** CLDN6

**Function**

Plays a major role in tight junction-specific obliteration of the intercellular space.

**Cellular Location**

Cell junction, tight junction {ECO:0000250|UniProtKB:Q9Z262}. Cell membrane; Multi-pass membrane protein

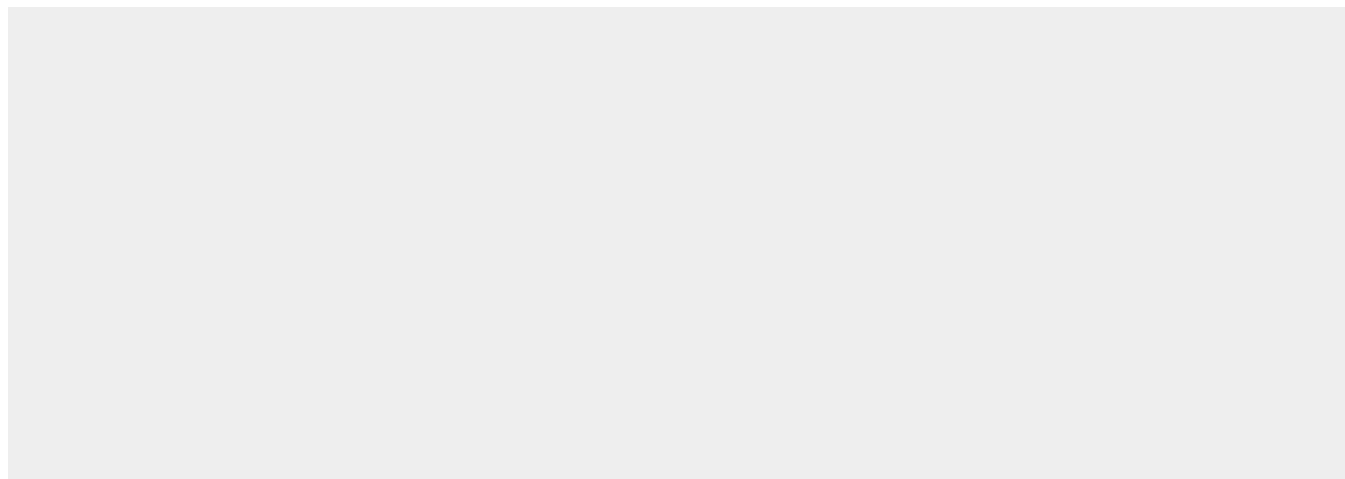
**Tissue Location**

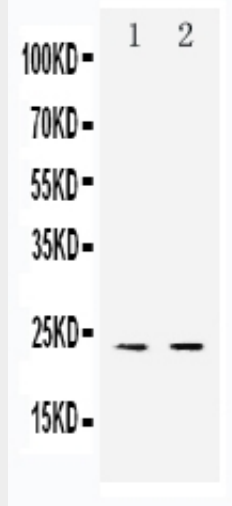
Expressed in the liver, in peripheral blood mononuclear cells and hepatocarcinoma cell lines

**Anti-Claudin 6 Antibody - Protocols**

Provided below are standard protocols that you may find useful for product applications.

- [Western Blot](#)
- [Blocking Peptides](#)
- [Dot Blot](#)
- [Immunohistochemistry](#)
- [Immunofluorescence](#)
- [Immunoprecipitation](#)
- [Flow Cytometry](#)
- [Cell Culture](#)

**Anti-Claudin 6 Antibody - Images**



Anti-Claudin 6 antibody, ABO11326, Western blotting Lane 1: HELA Cell Lysate Lane 2: SMMC Cell Lysate

#### **Anti-Claudin 6 Antibody - Background**

Claudin-6 is a protein that in humans is encoded by the CLDN6 gene. It belongs to the group of claudins. Tight junctions represent one mode of cell-to-cell adhesion in epithelial or endothelial cell sheets, forming continuous seals around cells and serving as a physical barrier to prevent solutes and water from passing freely through the paracellular space. These junctions are comprised of sets of continuous networking strands in the outwardly facing cytoplasmic leaflet, with complementary grooves in the inwardly facing extracytoplasmic leaflet. This gene encodes a component of tight junction strands, which is a member of the claudin family. The protein is an integral membrane protein and is one of the entry cofactors for hepatitis C virus. The gene methylation may be involved in esophageal tumorigenesis. This gene is adjacent to another family member CLDN9 on chromosome 16.