

Anti-Wnt4 Antibody
Catalog # ABO11427**Specification**

Anti-Wnt4 Antibody - Product Information

Application	WB
Primary Accession	P56705
Host	Rabbit
Reactivity	Human, Mouse, Rat
Clonality	Polyclonal
Format	Lyophilized

Description

Rabbit IgG polyclonal antibody for Protein Wnt-4(WNT4) detection. Tested with WB in Human;Mouse;Rat.

Reconstitution

Add 0.2ml of distilled water will yield a concentration of 500ug/ml.

Anti-Wnt4 Antibody - Additional Information

Gene ID 54361

Other Names

Protein Wnt-4, WNT4

Calculated MW

39052 MW KDa

Application Details

Western blot, 0.1-0.5 µg/ml, Human, Mouse, Rat

Subcellular Localization

Secreted, extracellular space, extracellular matrix.

Protein Name

Protein Wnt-4

Contents

Each vial contains 5mg BSA, 0.9mg NaCl, 0.2mg Na₂HPO₄, 0.05mg Thimerosal, 0.05mg NaN₃.

Immunogen

A synthetic peptide corresponding to a sequence at the C-terminus of human Wnt4(232-249aa HALKEKFDGATEVEPRRV), identical to the related mouse and rat sequences.

Purification

Immunogen affinity purified.

Cross Reactivity

No cross reactivity with other proteins

Storage

At -20°C for one year. After reconstitution, at 4°C for one month. It can also be aliquotted and stored frozen at -20°C for a longer time. Avoid repeated freezing and thawing.

Anti-Wnt4 Antibody - Protein Information**Name** WNT4**Function**

Ligand for members of the frizzled family of seven transmembrane receptors (Probable). Plays an important role in the embryonic development of the urogenital tract and the lung (PubMed: 15317892, PubMed: 16959810, PubMed: 18179883, PubMed: 18182450). Required for normal mesenchyme to epithelium transition during embryonic kidney development. Required for the formation of early epithelial renal vesicles during kidney development (By similarity). Required for normal formation of the Mullerian duct in females, and normal levels of oocytes in the ovaries (PubMed: 15317892, PubMed: 16959810, PubMed: 18182450). Required for normal down-regulation of 3 beta-hydroxysteroid dehydrogenase in the ovary (PubMed: 15317892, PubMed: 16959810, PubMed: 18182450). Required for normal lung development and for normal patterning of tracheal cartilage rings (By similarity).

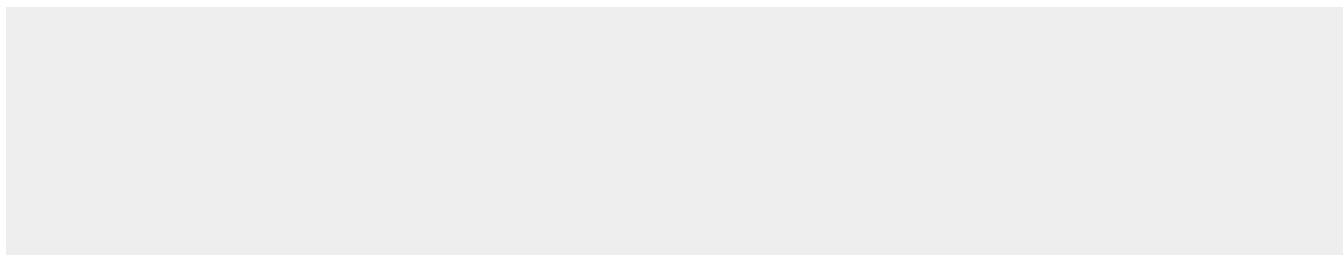
Cellular Location

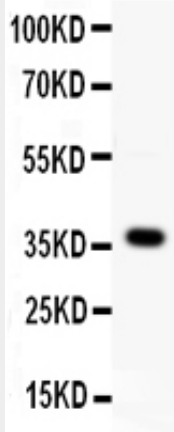
Secreted, extracellular space, extracellular matrix

Anti-Wnt4 Antibody - Protocols

Provided below are standard protocols that you may find useful for product applications.

- [Western Blot](#)
- [Blocking Peptides](#)
- [Dot Blot](#)
- [Immunohistochemistry](#)
- [Immunofluorescence](#)
- [Immunoprecipitation](#)
- [Flow Cytometry](#)
- [Cell Culture](#)

Anti-Wnt4 Antibody - Images



Anti- WNT4 antibody, ABO11427, Western blottingAll lanes: Anti WNT4 (ABO11427) at 0.5ug/mlWB: MCF-7 Whole Cell Lysate at 40ugPredicted bind size: 37KDObserved bind size: 37KD

Anti-Wnt4 Antibody - Background

Wingless-type MMIV integration site family, member4, is a secreted protein that in humans is encoded by the Wnt4 gene. By fluorescence in situ hybridization, WNT4 gene was mapped to chromosome 1p35, a location consistent with the results of radiation hybrid mapping. The WNT gene family consists of structurally related genes that encode secreted signaling proteins. These proteins have been implicated in oncogenesis and in several developmental processes, including regulation of cell fate and embryogenesis.