

Anti-FLI1 Antibody
Catalog # ABO11488**Specification**

Anti-FLI1 Antibody - Product Information

Application	IHC, WB
Primary Accession	Q01543
Host	Rabbit
Reactivity	Human, Mouse, Rat
Clonality	Polyclonal
Format	Lyophilized

Description

Rabbit IgG polyclonal antibody for Friend leukemia integration 1 transcription factor(FLI1) detection. Tested with WB, IHC-P in Human;Mouse;Rat.

Reconstitution

Add 0.2ml of distilled water will yield a concentration of 500ug/ml.

Anti-FLI1 Antibody - Additional Information

Gene ID 2313

Other Names

Friend leukemia integration 1 transcription factor, Proto-oncogene Fli-1, Transcription factor ERGB, FLI1

Calculated MW

50982 MW KDa

Application Details

Immunohistochemistry(Paraffin-embedded Section), 0.5-1 µg/ml, Human, Rat, Mouse, By Heat
Western blot, 0.1-0.5 µg/ml, Human, Mouse, Rat

Subcellular Localization

Nucleus.

Protein Name

Friend leukemia integration 1 transcription factor

Contents

Each vial contains 5mg BSA, 0.9mg NaCl, 0.2mg Na₂HPO₄, 0.05mg Thimerosal, 0.05mg NaN₃.

Immunogen

A synthetic peptide corresponding to a sequence at the N-terminus of human FLI1(54-73aa QQEWINQPVVRVNVKREYDHM), identical to the related rat and mouse sequences.

Purification

Immunogen affinity purified.

Cross Reactivity

No cross reactivity with other proteins

Storage

At -20°C for one year. After reconstitution, at 4°C for one month. It can also be aliquotted and stored frozen at -20°C for a longer time. Avoid repeated freezing and thawing.

Sequence Similarities

Belongs to the ETS family.

Anti-FLI1 Antibody - Protein Information**Name** FLI1**Function**

Sequence-specific transcriptional activator (PubMed:24100448, PubMed:26316623, PubMed:28255014). Recognizes the DNA sequence 5'- C[CA]GGAAGT-3'.

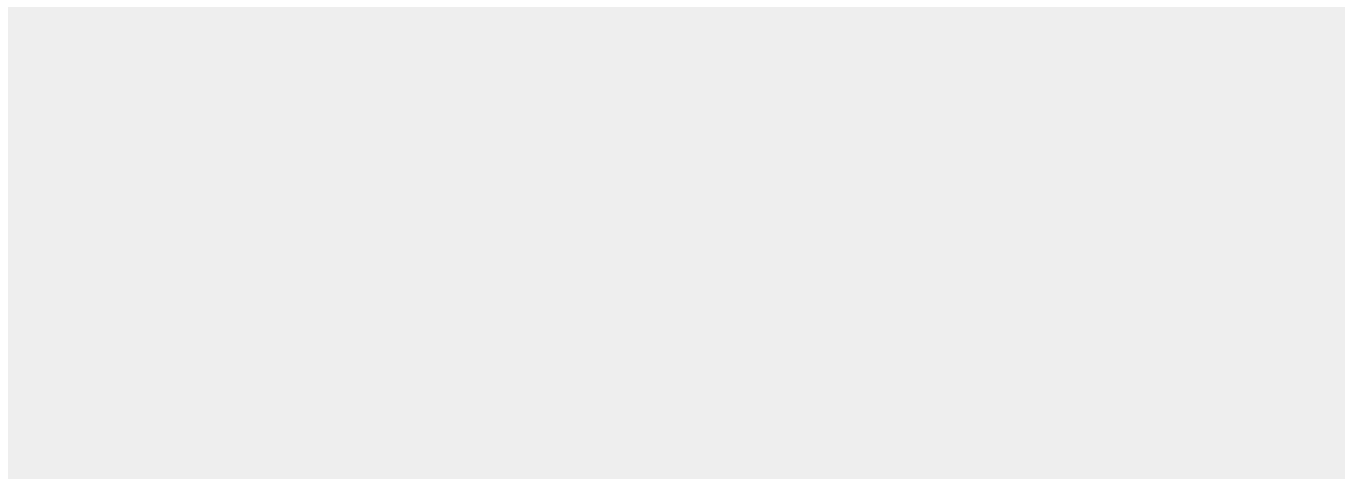
Cellular Location

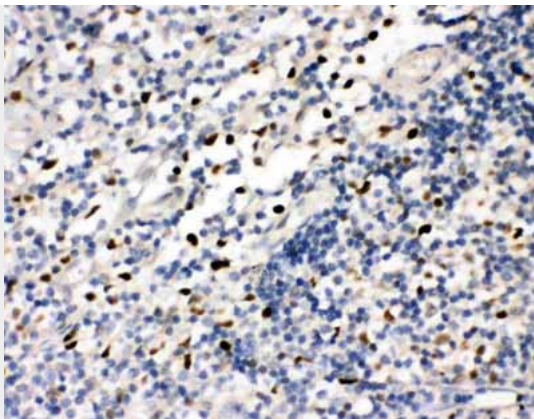
Nucleus.

Anti-FLI1 Antibody - Protocols

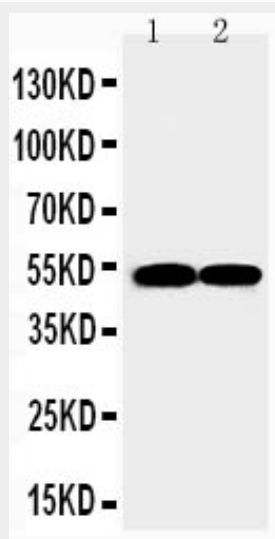
Provided below are standard protocols that you may find useful for product applications.

- [Western Blot](#)
- [Blocking Peptides](#)
- [Dot Blot](#)
- [Immunohistochemistry](#)
- [Immunofluorescence](#)
- [Immunoprecipitation](#)
- [Flow Cytometry](#)
- [Cell Culture](#)

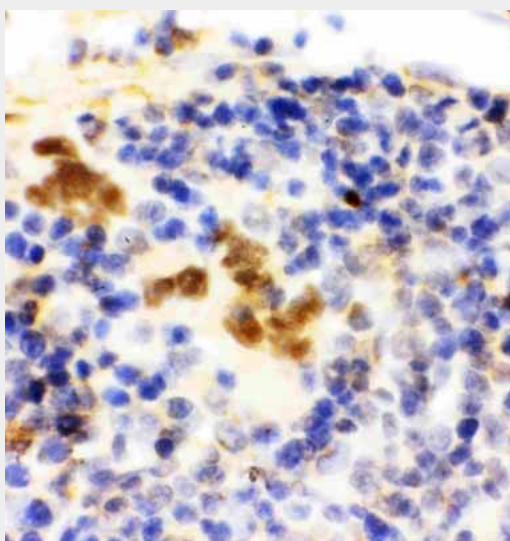
Anti-FLI1 Antibody - Images



Anti-FLI1 antibody, ABO11488, IHC(P)IHC(P): Human Tonsil Tissue



Anti-FLI1 antibody, ABO11488, Western blottingLane 1: JURKAT Cell LysateLane 2: RAJI Cell Lysate



Anti-FLI1 antibody, ABO11488, IHC(P)IHC(P): Rat Spleen Tissue

Anti-FLI1 Antibody - Background

Friend leukemia integration 1 transcription factor, also known as Transcription factor ERGB or Proto-oncogene Fli-1 is a protein that in humans is encoded by the human FLI1 gene. The fli1 protooncogene encodes a member of the ETS family of winged helix-turn-helix transcription factors. This gene is mapped to 11q24.3. Fli-1 is activated through retroviral insertional mutagenesis in 90% of F-MuLV-induced erythroleukemias. The constitutive activation of fli-1 in erythroblasts leads to a dramatic shift in the Epo/Epo-R signal transduction pathway, blocking erythroid differentiation, activating the Ras pathway, and resulting in massive Epo-independent proliferation of erythroblasts. These results suggest that Fli-1 overexpression in erythroblasts alters their responsiveness to Epo and triggers abnormal proliferation by switching the signaling event(s) associated with terminal differentiation to proliferation.