

**Anti-SLC1A4 Antibody**  
**Catalog # ABO11496****Specification**

---

**Anti-SLC1A4 Antibody - Product Information**

Application	WB, IHC
Primary Accession	<a href="#">P43007</a>
Host	Rabbit
Reactivity	Human, Mouse, Rat
Clonality	Polyclonal
Format	Lyophilized

**Description**

Rabbit IgG polyclonal antibody for Neutral amino acid transporter A(SLC1A4) detection. Tested with WB, IHC-P in Human;Mouse;Rat.

**Reconstitution**

Add 0.2ml of distilled water will yield a concentration of 500ug/ml.

**Anti-SLC1A4 Antibody - Additional Information**

**Gene ID** 6509

**Other Names**

Neutral amino acid transporter A, Alanine/serine/cysteine/threonine transporter 1, ASCT-1, SATT, Solute carrier family 1 member 4, SLC1A4, ASCT1, SATT

**Calculated MW**

55723 MW KDa

**Application Details**

Immunohistochemistry(Paraffin-embedded Section), 0.5-1 µg/ml, Human, Rat, Mouse, By Heat<br>Western blot, 0.1-0.5 µg/ml, Human, Mouse, Rat<br>

**Subcellular Localization**

Membrane ; Multi-pass membrane protein . Melanosome . Identified by mass spectrometry in melanosome fractions from stage I to stage IV.

**Tissue Specificity**

Expressed mostly in brain, muscle, and pancreas but detected in all tissues examined.

**Protein Name**

Neutral amino acid transporter A

**Contents**

Each vial contains 5mg BSA, 0.9mg NaCl, 0.2mg Na<sub>2</sub>HPO<sub>4</sub>, 0.05mg Thimerosal, 0.05mg NaN<sub>3</sub>.

**Immunogen**

A synthetic peptide corresponding to a sequence at the C-terminus of human SLC1A4(495-512aa EAIPNCKSEEETSPVTH), different from the related rat and mouse sequences by one amino acid.

**Purification**

Immunogen affinity purified.

**Cross Reactivity**

No cross reactivity with other proteins

**Storage**

**At -20°C for one year. After reconstitution, at 4°C for one month. It can also be aliquotted and stored frozen at -20°C for a longer time. Avoid repeated freezing and thawing.**

**Anti-SLC1A4 Antibody - Protein Information**

**Name** SLC1A4 {ECO:0000303|PubMed:7896285, ECO:0000312|HGNC:HGNC:10942}

**Function**

Sodium-dependent neutral amino-acid transporter that mediates transport of alanine, serine, cysteine, proline, hydroxyproline and threonine.

**Cellular Location**

Membrane; Multi-pass membrane protein. Melanosome. Note=Identified by mass spectrometry in melanosome fractions from stage I to stage IV

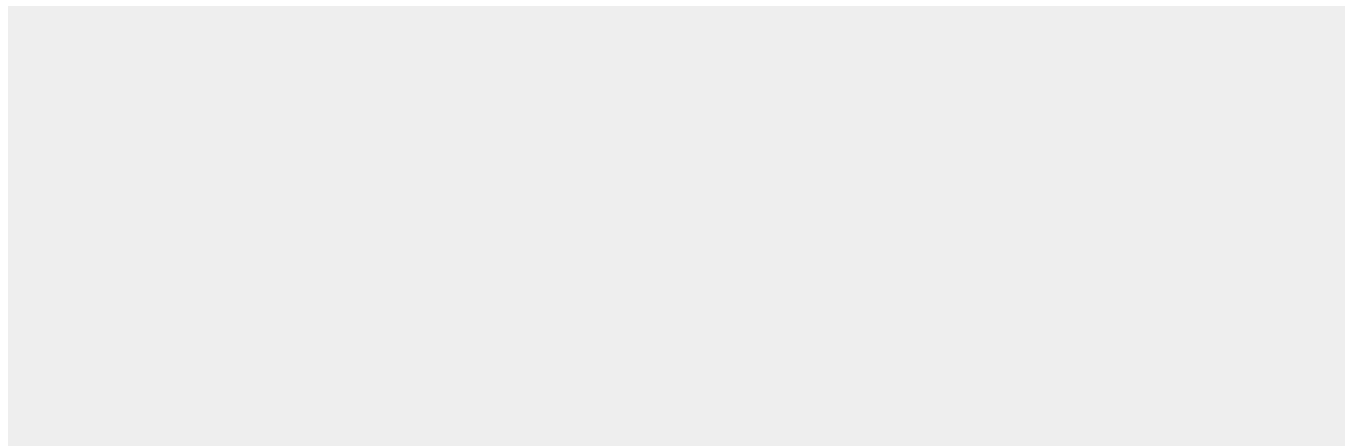
**Tissue Location**

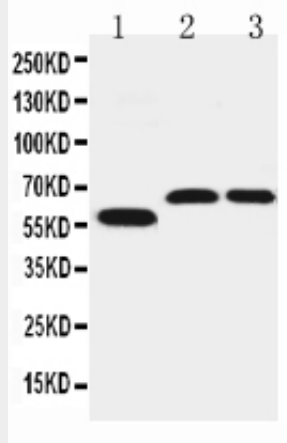
Expressed mostly in brain, muscle, and pancreas but detected in all tissues examined.

**Anti-SLC1A4 Antibody - Protocols**

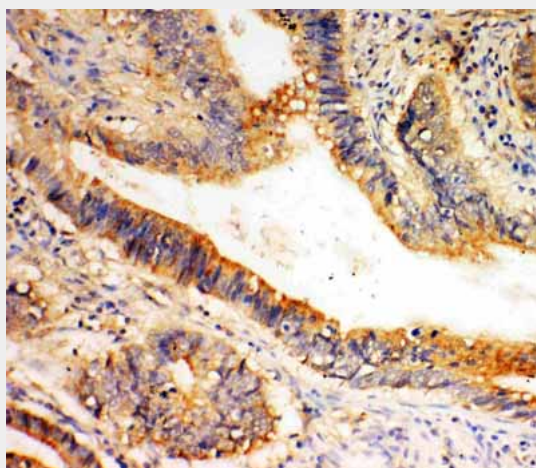
Provided below are standard protocols that you may find useful for product applications.

- [Western Blot](#)
- [Blocking Peptides](#)
- [Dot Blot](#)
- [Immunohistochemistry](#)
- [Immunofluorescence](#)
- [Immunoprecipitation](#)
- [Flow Cytometry](#)
- [Cell Culture](#)

**Anti-SLC1A4 Antibody - Images**



Anti-SLC1A4 antibody, ABO11496, Western blotting  
Lane 1: U87 Cell Lysate  
Lane 2: Rat Brain Tissue Lysate  
Lane 3: Mouse Brain Tissue Lysate



Anti-SLC1A4 antibody, ABO11496, IHC(P)  
IHC(P): Human Intestinal Cancer Tissue

### Anti-SLC1A4 Antibody - Background

Neutral amino acid transporter A, also called SLC1A4 or ASCT1, is a protein that in humans is encoded by the SLC1A4 gene. The SLC1A4 gene is mapped to chromosome 2p14 based on an alignment of the SLC1A4 sequence with the genomic sequence (GRCh37). ASCT1 does not transport glutamate or aspartate but alanine, serine, cysteine, and threonine instead. It is found that the ASCT1 transporter functions primarily as an amino acid exchanger. Transport is associated with a chloride channel activity that is thermodynamically uncoupled from amino acid transport. This gene also exhibits sodium dependence.