

Anti-Serpin C1/Antithrombin-III Antibody
Catalog # ABO11528**Specification**

Anti-Serpin C1/Antithrombin-III Antibody - Product Information

Application	WB
Primary Accession	P01008
Host	Rabbit
Reactivity	Human, Mouse, Rat
Clonality	Polyclonal
Format	Lyophilized

Description

Rabbit IgG polyclonal antibody for Antithrombin-III(SERPINC1) detection. Tested with WB in Human;Mouse;Rat.

Reconstitution

Add 0.2ml of distilled water will yield a concentration of 500ug/ml.

Anti-Serpin C1/Antithrombin-III Antibody - Additional Information

Gene ID 462

Other Names

Antithrombin-III, ATIII, Serpin C1, SERPINC1, AT3

Calculated MW

52602 MW KDa

Application Details

Western blot, 0.1-0.5 µg/ml, Human, Rat, Mouse

Subcellular Localization

Secreted, extracellular space.

Tissue Specificity

Found in plasma.

Protein Name

Antithrombin-III

Contents

Each vial contains 5mg BSA, 0.9mg NaCl, 0.2mg Na₂HPO₄, 0.05mg Thimerosal, 0.05mg NaN₃.

Immunogen

A synthetic peptide corresponding to a sequence at the N-terminus of human Antithrombin III(93-107aa TFYQHLADSKNDNDN), different from the related mouse and rat sequences by one amino acid.

Purification

Immunogen affinity purified.

Cross Reactivity

No cross reactivity with other proteins

Storage

At -20°C for one year. After reconstitution, at 4°C for one month. It can also be aliquotted and stored frozen at -20°C for a longer time. Avoid repeated freezing and thawing.

Sequence Similarities

Belongs to the serpin family.

Anti-Serpin C1/Antithrombin-III Antibody - Protein Information

Name SERPINC1

Synonyms AT3

Function

Most important serine protease inhibitor in plasma that regulates the blood coagulation cascade (PubMed: [15853774](http://www.uniprot.org/citations/15853774)), (PubMed: [15140129](http://www.uniprot.org/citations/15140129)). AT-III inhibits thrombin, matrilysin-3/TMPRSS7, as well as factors IXa, Xa and XIa (PubMed: [15140129](http://www.uniprot.org/citations/15140129)). Its inhibitory activity is greatly enhanced in the presence of heparin.

Cellular Location

Secreted, extracellular space.

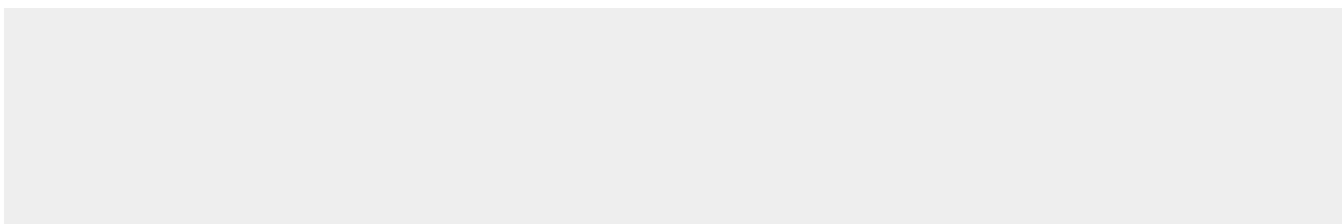
Tissue Location

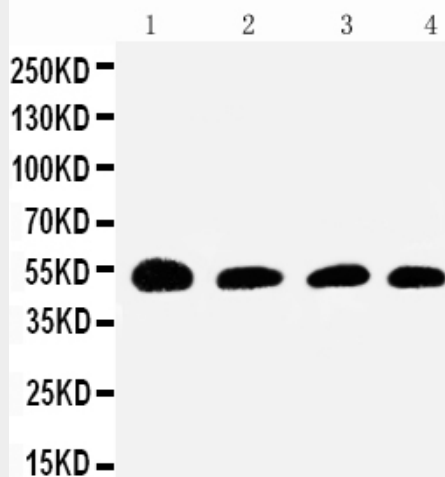
Found in plasma.

Anti-Serpin C1/Antithrombin-III Antibody - Protocols

Provided below are standard protocols that you may find useful for product applications.

- [Western Blot](#)
- [Blocking Peptides](#)
- [Dot Blot](#)
- [Immunohistochemistry](#)
- [Immunofluorescence](#)
- [Immunoprecipitation](#)
- [Flow Cytometry](#)
- [Cell Culture](#)

Anti-Serpin C1/Antithrombin-III Antibody - Images



Anti-Antithrombin III antibody, ABO11528, Western blotting
Lane 1: Rat Testis Tissue Lysate
Lane 2: SMMC Cell Lysate
Lane 3: JURKAT Cell Lysate
Lane 4: RAJI Cell Lysate

Anti-Serpin C1/Antithrombin-III Antibody - Background

Serpin peptidase inhibitor, clade C(antithrombin), member 1, also known as Antithrombin III(AT3) is the most important inhibitor of thrombin OMBIN III and other coagulation proteinases. This gene is mapped to 1q25.1. The protein encoded by this gene is a plasma protease inhibitor and a member of the serpin superfamily. This protein inhibits thrombin as well as other activated serine proteases of the coagulation system, and it regulates the blood coagulation cascade. The protein includes two functional domains: the heparin binding-domain at the N-terminus of the mature protein, and the reactive site domain at the C-terminus. The inhibitory activity is enhanced by the presence of heparin. More than 120 mutations have been identified for this gene, many of which are known to cause antithrombin-III deficiency.