

Anti-FSH Receptor Picoband Antibody
Catalog # ABO11683**Specification**

Anti-FSH Receptor Picoband Antibody - Product Information

Application	WB
Primary Accession	P23945
Host	Rabbit
Reactivity	Human, Mouse, Rat
Clonality	Polyclonal
Format	Lyophilized

Description

Rabbit IgG polyclonal antibody for Follicle-stimulating hormone receptor(FSH-R)(FSHR) detection. Tested with WB in Human;Mouse;Rat.

Reconstitution

Add 0.2ml of distilled water will yield a concentration of 500ug/ml.

Anti-FSH Receptor Picoband Antibody - Additional Information

Gene ID 2492

Other Names

Follicle-stimulating hormone receptor, FSH-R, Follitropin receptor, FSHR, LGR1

Calculated MW

78265 MW KDa

Application Details

Western blot, 0.1-0.5 µg/ml, Human, Mouse, Rat

Subcellular Localization

Cell membrane; Multi-pass membrane protein.

Tissue Specificity

Sertoli cells and ovarian granulosa cells.

Protein Name

Follicle-stimulating hormone receptor(FSH-R)

Contents

Each vial contains 5mg BSA, 0.9mg NaCl, 0.2mg Na₂HPO₄, 0.05mg Na₃.

Immunogen

E. coli-derived human FSH Receptor recombinant protein (Position: C18-N187). Human FSH Receptor shares 91.2% and 90% amino acid (aa) sequence identity with mouse and rat FSH Receptor, respectively.

Purification

Immunogen affinity purified.

Cross Reactivity

No cross reactivity with other proteins.

Storage

At -20°C for one year. After reconstitution, at 4°C for one month. It can also be aliquotted and stored frozen at -20°C for a longer time. Avoid repeated freezing and thawing.

Anti-FSH Receptor Picoband Antibody - Protein Information

Name FSHR

Synonyms LGR1

Function

G protein-coupled receptor for follitropin, the follicle- stimulating hormone (PubMed:11847099, PubMed:24058690, PubMed:24692546). Through cAMP production activates the downstream PI3K-AKT and ERK1/ERK2 signaling pathways (PubMed:24058690).

Cellular Location

Cell membrane; Multi-pass membrane protein

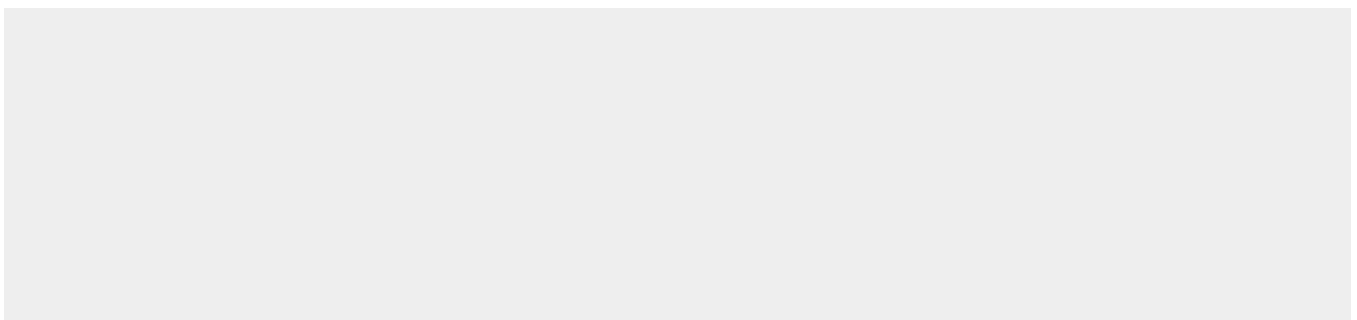
Tissue Location

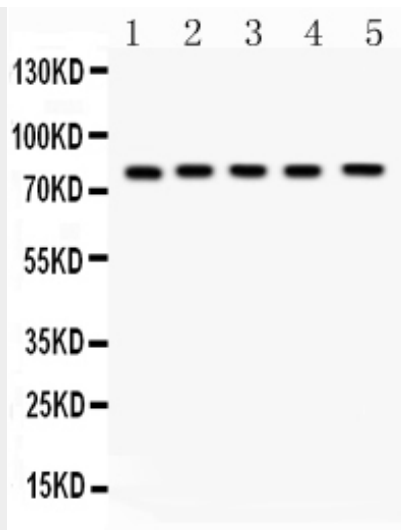
Sertoli cells and ovarian granulosa cells.

Anti-FSH Receptor Picoband Antibody - Protocols

Provided below are standard protocols that you may find useful for product applications.

- [Western Blot](#)
- [Blocking Peptides](#)
- [Dot Blot](#)
- [Immunohistochemistry](#)
- [Immunofluorescence](#)
- [Immunoprecipitation](#)
- [Flow Cytometry](#)
- [Cell Culture](#)

Anti-FSH Receptor Picoband Antibody - Images



Western blot analysis of FSH Receptor expression in rat testis extract (lane 1), rat ovary extract (lane 2), mouse testis extract (lane 3), mouse ovary extract (lane 4) and HELA whole cell lysates (lane 5). FSH Receptor at 78KD was detected using rabbit anti- FSH Receptor Antigen Affinity purified polyclonal antibody (Catalog # ABO11683) at 0.5 µg/mL. The blot was developed using chemiluminescence (ECL) method.

Anti-FSH Receptor Picoband Antibody - Background

The follicle-stimulating hormone receptor or FSH receptor (FSHR) is a transmembrane receptor that interacts with the follicle-stimulating hormone (FSH) and represents a G protein-coupled receptor (GPCR). This FSHR gene is mapped to chromosome 2p21 by fluorescence in situ hybridization. The protein encoded by this gene belongs to family 1 of G-protein coupled receptors. It is the receptor for follicle stimulating hormone and functions in gonad development. Mutations in this gene cause ovarian dysgenesis type 1, and also ovarian hyperstimulation syndrome. Alternative splicing results in multiple transcript variants.