

Anti-IL-6 Antibody
Catalog # ABO11758**Specification**

Anti-IL-6 Antibody - Product Information

| | |
|-------------------|------------------------|
| Application | WB, E |
| Primary Accession | P08505 |
| Host | Rabbit |
| Reactivity | Mouse |
| Clonality | Polyclonal |
| Format | Lyophilized |

Description

Rabbit IgG polyclonal antibody for Interleukin-6(IL6) detection. Tested with WB, ELISA in Mouse.

Reconstitution

Add 0.2ml of distilled water will yield a concentration of 500ug/ml.

Anti-IL-6 Antibody - Additional Information

Gene ID 16193

Other Names

Interleukin-6, IL-6, B-cell hybridoma growth factor, Interleukin HP-1, IL6, IL-6

Calculated MW

24384 MW KDa

Application Details

ELISA , 0.1-0.5 µg/ml, Mouse, -
Western blot, 0.1-0.5 µg/ml, Mouse

Subcellular Localization

Secreted.

Protein Name

Interleukin-6

Contents

Each vial contains 5mg BSA, 0.9mg NaCl, 0.2mg Na₂HPO₄, 0.05mg Na₃.

Immunogen

E.coli-derived mouse IL-6 recombinant protein (Position: F25-T211). Mouse IL-6 shares 40% and 85% amino acid (aa) sequences identity with human and rat IL-6, respectively.

Purification

Immunogen affinity purified.

Cross Reactivity

No cross reactivity with other proteins

Storage

At -20°C for one year. After reconstitution, at 4°C for one month. It can also be aliquotted and stored frozen at -20°C for a longer time. Avoid repeated freezing and thawing.

Anti-IL-6 Antibody - Protein Information

Name IL6 {ECO:0000312|MGI:MGI:96559}

Synonyms IL-6

Function

Cytokine with a wide variety of biological functions in immunity, tissue regeneration, and metabolism (Probable). Binds to IL6R, then the complex associates to the signaling subunit IL6ST/gp130 to trigger the intracellular IL6-signaling pathway (PubMed:8910279). The interaction with the membrane-bound IL6R and IL6ST stimulates 'classic signaling', whereas the binding of IL6 and soluble IL6R to IL6ST stimulates 'trans-signaling'. Alternatively, 'cluster signaling' occurs when membrane-bound IL6:IL6R complexes on transmitter cells activate IL6ST receptors on neighboring receiver cells (PubMed:27893700).

Cellular Location

Secreted.

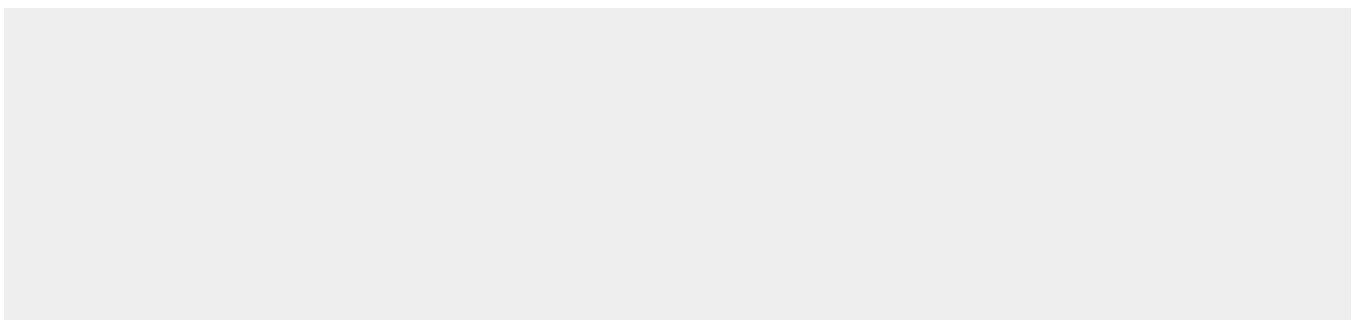
Tissue Location

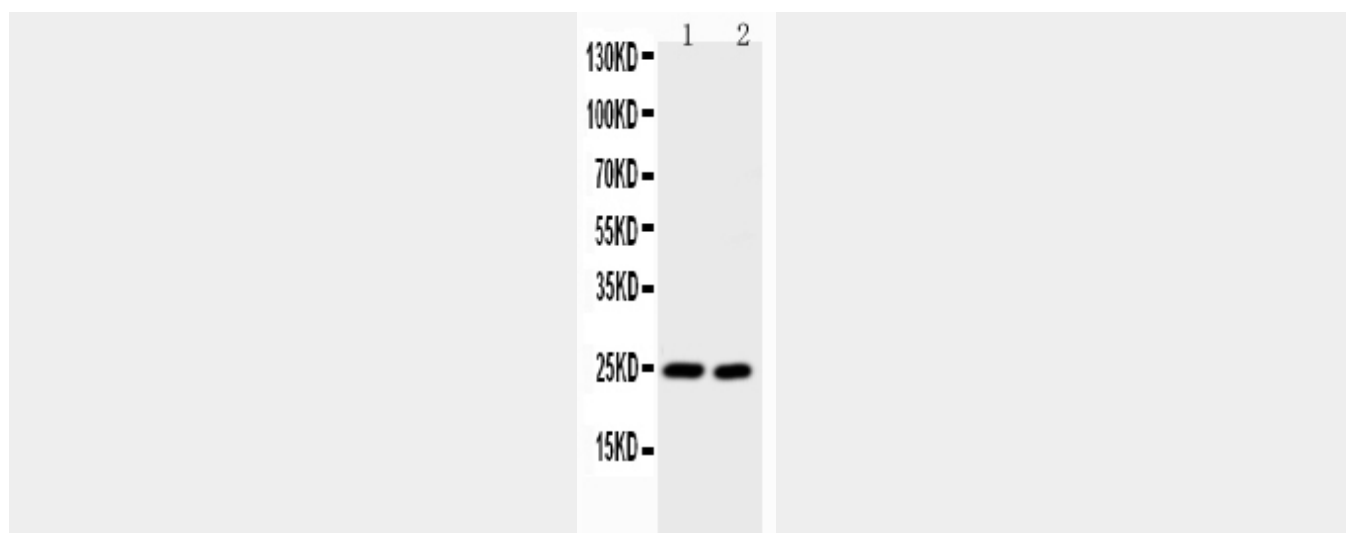
Expressed by dendritic cells and macrophages (PubMed:27893700, PubMed:23045607). Expressed by activated follicular B cells (PubMed:23045607). Abundantly expressed in the central nervous system (CNS), particularly the hypothalamic region (PubMed:28402851)

Anti-IL-6 Antibody - Protocols

Provided below are standard protocols that you may find useful for product applications.

- [Western Blot](#)
- [Blocking Peptides](#)
- [Dot Blot](#)
- [Immunohistochemistry](#)
- [Immunofluorescence](#)
- [Immunoprecipitation](#)
- [Flow Cytometry](#)
- [Cell Culture](#)

Anti-IL-6 Antibody - Images



Anti-IL-6 Picoband antibody, ABO11758-1.jpg All lanes: Anti-IL-6(ABO11758) at 0.5ug/ml Lane 1: HEPA Whole Cell Lysate at 40ug Lane 2: NIH Whole Cell Lysate at 40ug Predicted bind size: 24KD Observed bind size: 24KD

Anti-IL-6 Antibody - Background

Interleukin-6 (IL-6) is a protein that in humans is encoded by the IL6 gene. IL-6 is an interleukin that acts as both a pro-inflammatory and anti-inflammatory cytokine. It is secreted by T cells and macrophages to stimulate immune response to trauma, especially burns or other tissue damage leading to inflammation. IL-6 is one of the most important mediators of fever and of the acute phase response. IL-6 is also essential for hybridoma growth and is found in many supplemental cloning media such as briclone. Bowcock et al. (1988) assigned the IL6 gene to chromosome 7p21. By in situ hybridization and Southern blot analysis of mouse-human hybrid cell lines, Sutherland et al. (1988) mapped the IL-6 gene to chromosome 7p15.