

Anti-CD3 Epsilon Picoband Antibody
Catalog # ABO11801**Specification**

Anti-CD3 Epsilon Picoband Antibody - Product Information

Application	WB, IHC
Primary Accession	P07766
Host	Rabbit
Reactivity	Human, Mouse, Rat
Clonality	Polyclonal
Format	Lyophilized

Description

Rabbit IgG polyclonal antibody for T-cell surface glycoprotein CD3 epsilon chain(CD3E) detection. Tested with WB, IHC-P, IHC-F, ICC in Human;Mouse;Rat.

Reconstitution

Add 0.2ml of distilled water will yield a concentration of 500ug/ml.

Anti-CD3 Epsilon Picoband Antibody - Additional Information

Gene ID 916

Other Names

T-cell surface glycoprotein CD3 epsilon chain, T-cell surface antigen T3/Leu-4 epsilon chain, CD3e, CD3E, T3E

Calculated MW

23147 MW KDa

Application Details

Immunocytochemistry , 0.5-1 µg/ml, Human, -
Immunohistochemistry(Frozen Section), 0.5-1 µg/ml, Mouse, Rat, -
Immunohistochemistry(Paraffin-embedded Section), 0.5-1 µg/ml, Human, Mouse, Rat, By Heat
Western blot, 0.1-0.5 µg/ml, Human

Subcellular Localization

Membrane; Single-pass type I membrane protein.

Protein Name

T-cell surface glycoprotein CD3 epsilon chain

Contents

Each vial contains 5mg BSA, 0.9mg NaCl, 0.2mg Na₂HPO₄, 0.05mg Na₃.

Immunogen

E.coli-derived human CD3 epsilon recombinant protein (Position: D23-I207). Human CD3 epsilon shares 65% amino acid (aa) sequence identity with mouse CD3 epsilon.

Purification

Immunogen affinity purified.

Cross Reactivity

No cross reactivity with other proteins

Storage

At -20°C for one year. After reconstitution, at 4°C for one month. It can also be aliquotted and stored frozen at -20°C for a longer time. Avoid repeated freezing and thawing.

Sequence Similarities

Contains 1 Ig-like (immunoglobulin-like) domain.

Anti-CD3 Epsilon Picoband Antibody - Protein Information

Name CD3E

Synonyms T3E

Function

Part of the TCR-CD3 complex present on T-lymphocyte cell surface that plays an essential role in adaptive immune response. When antigen presenting cells (APCs) activate T-cell receptor (TCR), TCR-mediated signals are transmitted across the cell membrane by the CD3 chains CD3D, CD3E, CD3G and CD3Z. All CD3 chains contain immunoreceptor tyrosine-based activation motifs (ITAMs) in their cytoplasmic domain. Upon TCR engagement, these motifs become phosphorylated by Src family protein tyrosine kinases LCK and FYN, resulting in the activation of downstream signaling pathways (PubMed: [2470098](http://www.uniprot.org/citations/2470098)). In addition of this role of signal transduction in T-cell activation, CD3E plays an essential role in correct T-cell development. Initiates the TCR-CD3 complex assembly by forming the two heterodimers CD3D/CD3E and CD3G/CD3E. Participates also in internalization and cell surface down-regulation of TCR-CD3 complexes via endocytosis sequences present in CD3E cytosolic region (PubMed: [10384095](http://www.uniprot.org/citations/10384095), PubMed: [26507128](http://www.uniprot.org/citations/26507128)).

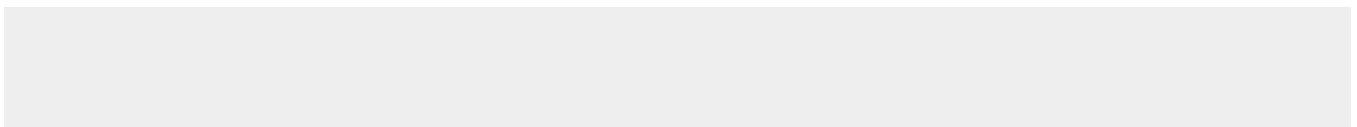
Cellular Location

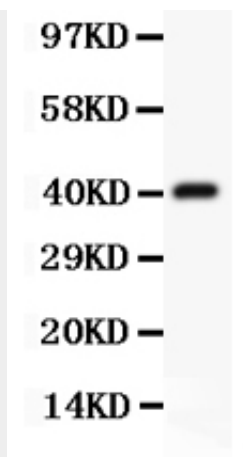
Cell membrane; Single-pass type I membrane protein

Anti-CD3 Epsilon Picoband Antibody - Protocols

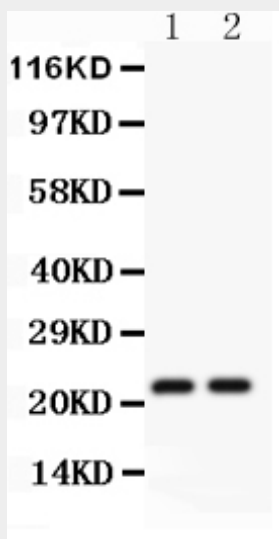
Provided below are standard protocols that you may find useful for product applications.

- [Western Blot](#)
- [Blocking Peptides](#)
- [Dot Blot](#)
- [Immunohistochemistry](#)
- [Immunofluorescence](#)
- [Immunoprecipitation](#)
- [Flow Cytometry](#)
- [Cell Culture](#)

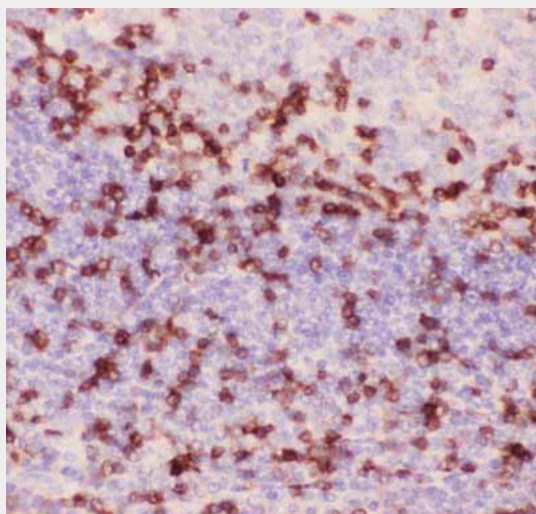
Anti-CD3 Epsilon Picoband Antibody - Images



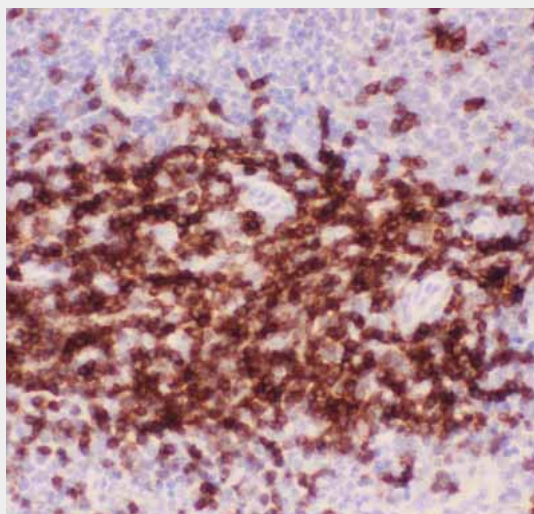
Anti-CD3 epsilon Picoband antibody, ABO11801-1.jpg All lanes: Anti CD3 Epsilon (ABO11801) at 0.5ug/ml WB : Recombinant Human CD3epsilon Protein 0.5ng Predicted bind size: 40KD Observed bind size: 40KD



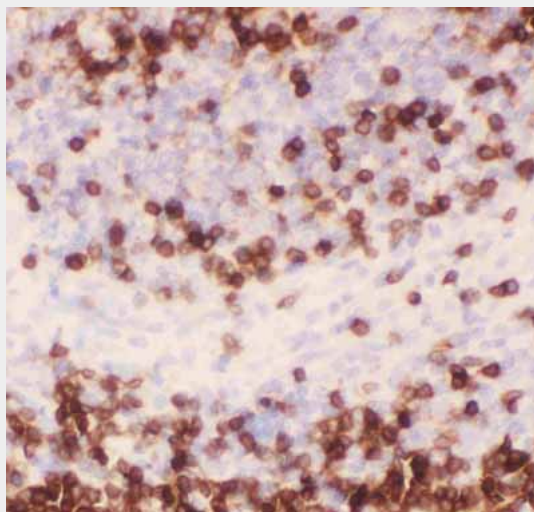
Anti-CD3 epsilon Picoband antibody, ABO11801-2.jpg All lanes: Anti CD3 Epsilon (ABO11801) at 0.5ug/ml Lane 1: JURKAT Whole Cell Lysate at 40ug Lane 2: CEM Whole Cell Lysate at 40ug Predicted bind size: 23KD Observed bind size: 23KD



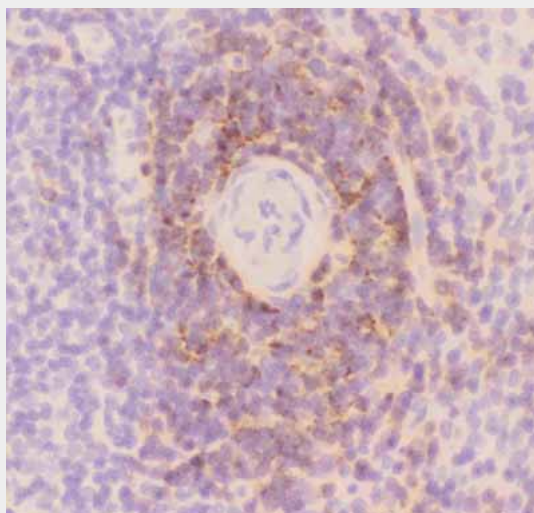
Anti-CD3 epsilon Picoband antibody, ABO11801-3.JPGIHC(P): Human Tonsil Tissue



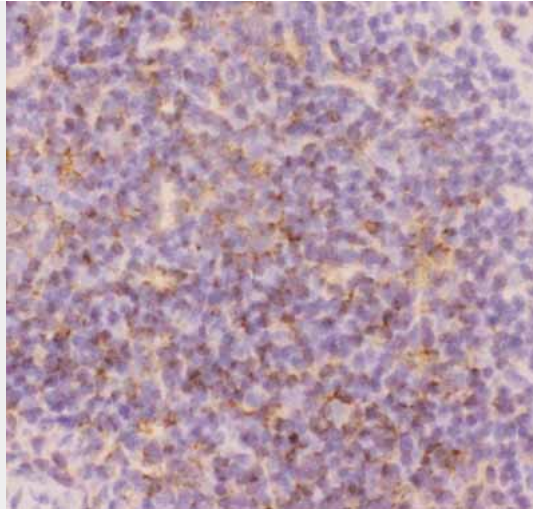
Anti-CD3 epsilon Picoband antibody, ABO11801-4.JPGIHC(P): Mouse Spleen Tissue



Anti-CD3 epsilon Picoband antibody, ABO11801-5.JPGIHC(P): Rat Spleen Tissue



Anti-CD3 epsilon Picoband antibody, pb9093-6.JPGIHC(F): Rat Spleen Tissue



Anti-CD3 epsilon Picoband antibody, pb9093-7.JPGIHC(F): Mouse Spleen Tissue

Anti-CD3 Epsilon Picoband Antibody - Background

CD3e molecule, epsilon also known as CD3E is a polypeptide which in humans is encoded by the CD3E gene which resides on chromosome 11. It is mapped to 11q23.3. The protein encoded by this gene is the CD3-epsilon polypeptide, which together with CD3-gamma, -delta and -zeta, and the T-cell receptor alpha/beta and gamma/delta heterodimers, forms the T cell receptor-CD3 complex. This complex plays an important role in coupling antigen recognition to several intracellular signal-transduction pathways. The genes encoding the epsilon, gamma and delta polypeptides are located in the same cluster on chromosome 11. The epsilon polypeptide plays an essential role in T-cell development.