

**Anti-SLUG Picoband Antibody**  
**Catalog # ABO12129****Specification**

---

**Anti-SLUG Picoband Antibody - Product Information**

Application	WB, IHC
Primary Accession	<a href="#">O43623</a>
Host	Rabbit
Reactivity	Human, Mouse, Rat
Clonality	Polyclonal
Format	Lyophilized

**Description**

Rabbit IgG polyclonal antibody for Zinc finger protein SNAI2(SNAI2) detection. Tested with WB, IHC-P in Human;Mouse;Rat.

**Reconstitution**

Add 0.2ml of distilled water will yield a concentration of 500ug/ml.

**Anti-SLUG Picoband Antibody - Additional Information**

**Gene ID** 6591

**Other Names**

Zinc finger protein SNAI2, Neural crest transcription factor Slug, Protein snail homolog 2, SNAI2, SLUG, SLUGH

**Calculated MW**

29986 MW KDa

**Application Details**

Immunohistochemistry(Paraffin-embedded Section), 0.5-1 µg/ml, Mouse, Rat, Human, By Heat<br>Western blot, 0.1-0.5 µg/ml, Human, Mouse<br>

**Subcellular Localization**

Nucleus. Cytoplasm. Observed in discrete foci in interphase nuclei. These nuclear foci do not overlap with the nucleoli, the SP100 and the HP1 heterochromatin or the coiled body, suggesting SNAI2 is associated with active transcription or active splicing regions.

**Tissue Specificity**

Expressed in most adult human tissues, including spleen, thymus, prostate, testis, ovary, small intestine, colon, heart, brain, placenta, lung, liver, skeletal muscle, kidney and pancreas. Not detected in peripheral blood leukocyte. Expressed in the dermis and in all layers of the epidermis, with high levels of expression in the basal layers (at protein level). Expressed in osteoblasts (at protein level). Expressed in mesenchymal stem cells (at protein level). Expressed in breast tumor cells (at protein level). .

**Protein Name**

Zinc finger protein SNAI2

**Contents**

Each vial contains 5mg BSA, 0.9mg NaCl, 0.2mg Na<sub>2</sub>HPO<sub>4</sub>, 0.05mg NaN<sub>3</sub>.

**Immunogen**

A synthetic peptide corresponding to a sequence in the middle region of human SLUG (116-148aa KLSDPHAIEAEKFQCNLCNKTYSTFSGLAHKQ), identical to the related mouse and rat sequences.

**Purification**

Immunogen affinity purified.

**Cross Reactivity**

No cross reactivity with other proteins

**Storage**

**At -20°C for one year. After reconstitution, at 4°C for one month. It can also be aliquotted and stored frozen at -20°C for a longer time. Avoid repeated freezing and thawing.**

**Sequence Similarities**

Belongs to the snail C2H2-type zinc-finger protein family.

**Anti-SLUG Picoband Antibody - Protein Information****Name** SNAI2**Synonyms** SLUG, SLUGH**Function**

Transcriptional repressor that modulates both activator- dependent and basal transcription. Involved in the generation and migration of neural crest cells. Plays a role in mediating RAF1-induced transcriptional repression of the TJ protein, occludin (OCLN) and subsequent oncogenic transformation of epithelial cells (By similarity). Represses BRCA2 expression by binding to its E2-box- containing silencer and recruiting CTBP1 and HDAC1 in breast cells. In epidermal keratinocytes, binds to the E-box in ITGA3 promoter and represses its transcription. Involved in the regulation of ITGB1 and ITGB4 expression and cell adhesion and proliferation in epidermal keratinocytes. Binds to E-box2 domain of BSG and activates its expression during TGFβ1-induced epithelial-mesenchymal transition (EMT) in hepatocytes. Represses E-Cadherin/CDH1 transcription via E-box elements. Involved in osteoblast maturation. Binds to RUNX2 and SOX9 promoters and may act as a positive and negative transcription regulator, respectively, in osteoblasts. Binds to CXCL12 promoter via E-box regions in mesenchymal stem cells and osteoblasts. Plays an essential role in TWIST1-induced EMT and its ability to promote invasion and metastasis.

**Cellular Location**

Nucleus. Cytoplasm. Note=Observed in discrete foci in interphase nuclei. These nuclear foci do not overlap with the nucleoli, the SP100 and the HP1 heterochromatin or the coiled body, suggesting SNAI2 is associated with active transcription or active splicing regions

**Tissue Location**

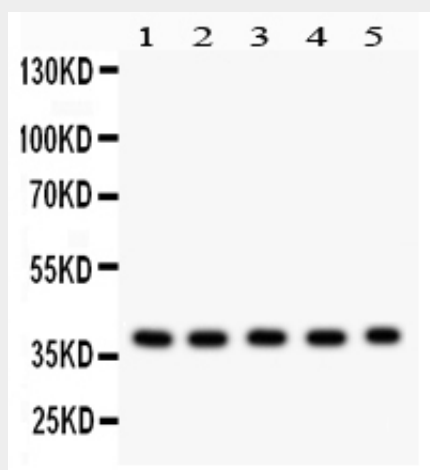
Expressed in most adult human tissues, including spleen, thymus, prostate, testis, ovary, small intestine, colon, heart, brain, placenta, lung, liver, skeletal muscle, kidney and pancreas. Not detected in peripheral blood leukocyte. Expressed in the dermis and in all layers of the epidermis, with high levels of expression in the basal layers (at protein level). Expressed in osteoblasts (at protein level). Expressed in mesenchymal stem cells (at protein level) Expressed in breast tumor cells (at protein level)

## Anti-SLUG Picoband Antibody - Protocols

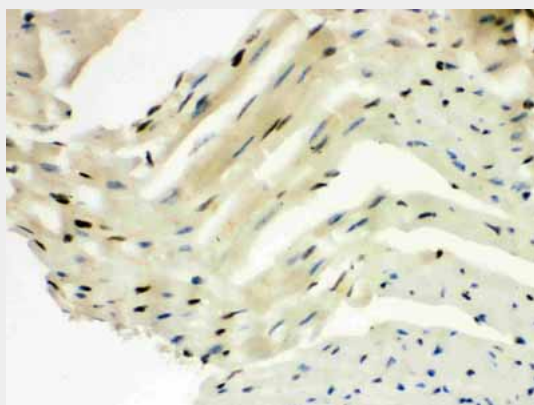
Provided below are standard protocols that you may find useful for product applications.

- [Western Blot](#)
- [Blocking Peptides](#)
- [Dot Blot](#)
- [Immunohistochemistry](#)
- [Immunofluorescence](#)
- [Immunoprecipitation](#)
- [Flow Cytometry](#)
- [Cell Culture](#)

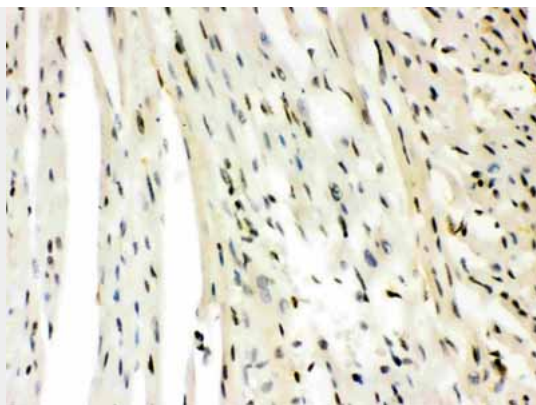
## Anti-SLUG Picoband Antibody - Images



Anti- SLUG Picoband antibody, ABO12129, Western blotting  
All lanes: Anti SLUG (ABO12129) at 0.5ug/ml  
Lane 1: Mouse Kidney Tissue Lysate at 50ug  
Lane 2: Mouse Lung Tissue Lysate at 50ug  
Lane 3: Mouse Spleen Tissue Lysate at 50ug  
Lane 4: Mouse Brain Tissue Lysate at 50ug  
Lane 5: MCF-7 Whole Cell Lysate at 40ug  
Predicted bind size: 30KD  
Observed bind size: 39KD



Anti- SLUG Picoband antibody, ABO12129, IHC(P)  
IHC(P): Mouse Cardiac Muscle Tissue



Anti- SLUG Picoband antibody, ABO12129,IHC(P)IHC(P): Rat Cardiac Muscle Tissue

#### **Anti-SLUG Picoband Antibody - Background**

SLUG is also known as SNAI2. This gene encodes a member of the Snail family of C2H2-type zinc finger transcription factors. The encoded protein acts as a transcriptional repressor that binds to E-box motifs and is also likely to repress E-cadherin transcription in breast carcinoma. This protein is involved in epithelial-mesenchymal transitions and has antiapoptotic activity. Mutations in this gene may be associated with sporadic cases of neural tube defects.