

Anti-Pax2 Picoband Antibody
Catalog # ABO12420**Specification**

Anti-Pax2 Picoband Antibody - Product Information

Application	WB, IHC
Primary Accession	Q02962
Host	Rabbit
Reactivity	Human, Mouse, Rat
Clonality	Polyclonal
Format	Lyophilized

Description

Rabbit IgG polyclonal antibody for Paired box protein Pax-2(PAX2) detection. Tested with WB, IHC-P in Human;Mouse;Rat.

Reconstitution

Add 0.2ml of distilled water will yield a concentration of 500ug/ml.

Anti-Pax2 Picoband Antibody - Additional Information

Gene ID 5076

Other Names

Paired box protein Pax-2, PAX2

Calculated MW

44706 MW KDa

Application Details

Immunohistochemistry(Paraffin-embedded Section), 0.5-1 µg/ml, Human, Mouse, Rat, By Heat
Western blot, 0.1-0.5 µg/ml, Rat, Human

Subcellular Localization

Nucleus.

Tissue Specificity

Expressed in primitive cells of the kidney, ureter, eye, ear and central nervous system.

Protein Name

Paired box protein Pax-2

Contents

Each vial contains 5mg BSA, 0.9mg NaCl, 0.2mg Na₂HPO₄, 0.05mg NaN₃.

Immunogen

A synthetic peptide corresponding to a sequence at the C-terminus of human Pax2 (248-282aa RKHLRADTFTQQLEALDRVFERPSYPDVFAQSEH), identical to the related mouse sequence.

Purification

Immunogen affinity purified.

Cross Reactivity

No cross reactivity with other proteins.

Storage

At -20°C for one year. After reconstitution, at 4°C for one month. It can also be aliquotted and stored frozen at -20°C for a longer time. Avoid repeated freezing and thawing.

Anti-Pax2 Picoband Antibody - Protein Information**Name** PAX2**Function**

Transcription factor that may have a role in kidney cell differentiation (PubMed:24676634). Has a critical role in the development of the urogenital tract, the eyes, and the CNS.

Cellular Location

Nucleus.

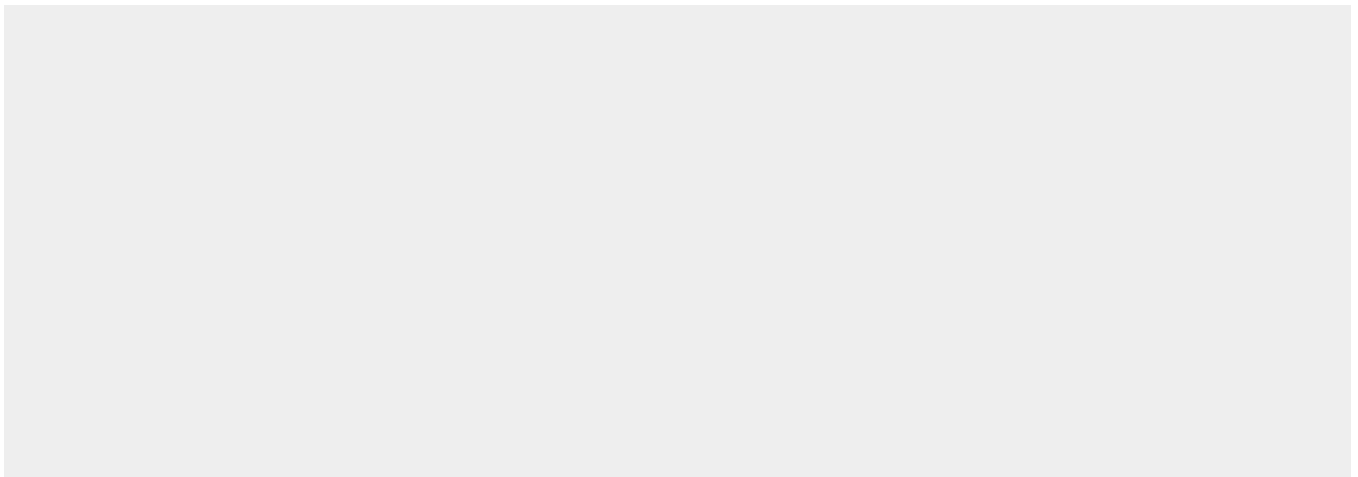
Tissue Location

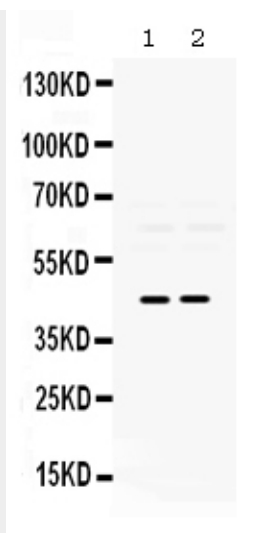
Expressed in primitive cells of the kidney, ureter, eye, ear and central nervous system

Anti-Pax2 Picoband Antibody - Protocols

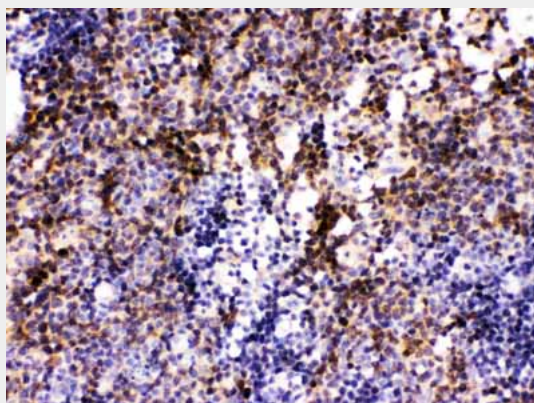
Provided below are standard protocols that you may find useful for product applications.

- [Western Blot](#)
- [Blocking Peptides](#)
- [Dot Blot](#)
- [Immunohistochemistry](#)
- [Immunofluorescence](#)
- [Immunoprecipitation](#)
- [Flow Cytometry](#)
- [Cell Culture](#)

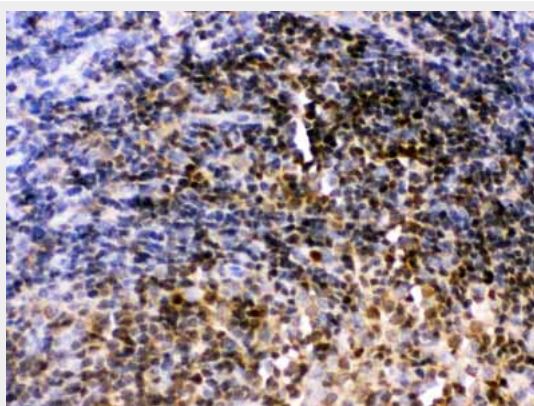
Anti-Pax2 Picoband Antibody - Images



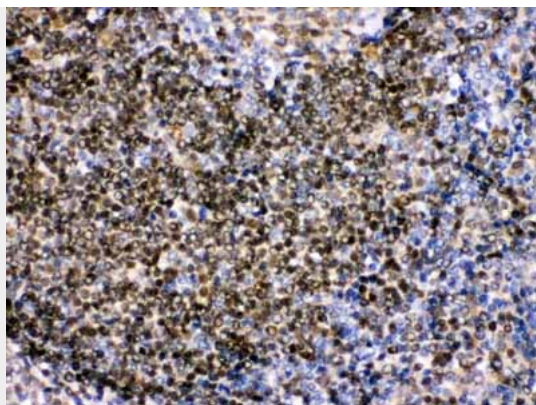
Anti- Pax2 Picoband antibody, ABO12420, Western blottingAll lanes: Anti Pax2 (ABO12420) at 0.5ug/mlLane 1: Rat Brain Tissue Lysate at 50ugLane 2: Rat Lung Tissue Lysate at 50ugPredicted bind size: 45KDObserved bind size: 45KD



Anti- Pax2 Picoband antibody, ABO12420,IHC(P)IHC(P): Mouse Lymphaden Tissue



Anti- Pax2 Picoband antibody, ABO12420,IHC(P)IHC(P): Rat Lymphaden Tissue



Anti- Pax2 Picoband antibody, ABO12420,IHC(P)IHC(P): Human Tonsil Tissue

Anti-Pax2 Picoband Antibody - Background

Paired box gene 2, also known as PAX2, is a protein which in humans is encoded by the PAX2 gene. This gene is mapped to 10q24. PAX2 encodes paired box gene 2, one of many human homologues of the *Drosophila melanogaster* gene *prd*. The central feature of this transcription factor gene family is the conserved DNA-binding paired box domain. PAX2 is believed to be a target of transcriptional suppression by the tumor suppressor gene WT1. Mutations within PAX2 have been shown to result in optic nerve colobomas and renal hypoplasia. Alternative splicing of this gene results in multiple transcript variants.