

**Anti-TIMP-3 Antibody**  
**Catalog # ABO12517****Specification**

---

**Anti-TIMP-3 Antibody - Product Information**

Application	WB
Primary Accession	<a href="#">P35625</a>
Host	Rabbit
Reactivity	Human, Mouse, Rat
Clonality	Polyclonal
Format	Lyophilized

**Description**

Rabbit IgG polyclonal antibody for Metalloproteinase inhibitor 3(TIMP3) detection. Tested with WB, ELISA in Human;Mouse;Rat.

**Reconstitution**

Add 0.2ml of distilled water will yield a concentration of 500ug/ml.

**Anti-TIMP-3 Antibody - Additional Information**

**Gene ID** 7078

**Other Names**

Metalloproteinase inhibitor 3, Protein MIG-5, Tissue inhibitor of metalloproteinases 3, TIMP-3, TIMP3

**Calculated MW**

24145 MW KDa

**Application Details**

ELISA , 0.1-0.5 µg/ml, Human, -<br>Western blot, 0.1-0.5 µg/ml, Human, Mouse, Rat<br>

**Subcellular Localization**

Secreted, extracellular space, extracellular matrix.

**Protein Name**

Metalloproteinase inhibitor 3

**Contents**

Each vial contains 5mg BSA, 0.9mg NaCl, 0.2mg Na<sub>2</sub>HPO<sub>4</sub>, 0.05mg NaN<sub>3</sub>.

**Immunogen**

E. coli-derived human TIMP3 recombinant protein (Position: C24-P211). Human TIMP3 shares 97.9% and 97.3% amino acid (aa) sequence identity with mouse and rat TIMP3, respectively.

**Purification**

Immunogen affinity purified.

**Cross Reactivity**

No cross reactivity with other proteins

Storage

**At -20°C for one year. After reconstitution, at 4°C for one month. It can also be aliquotted and stored frozen at -20°C for a longer time. Avoid repeated freezing and thawing.**

### Anti-TIMP-3 Antibody - Protein Information

**Name** TIMP3

#### Function

Complexes with metalloproteinases (such as collagenases) and irreversibly inactivates them by binding to their catalytic zinc cofactor. May form part of a tissue-specific acute response to remodeling stimuli. Known to act on MMP-1, MMP-2, MMP-3, MMP-7, MMP-9, MMP-13, MMP-14 and MMP-15.

#### Cellular Location

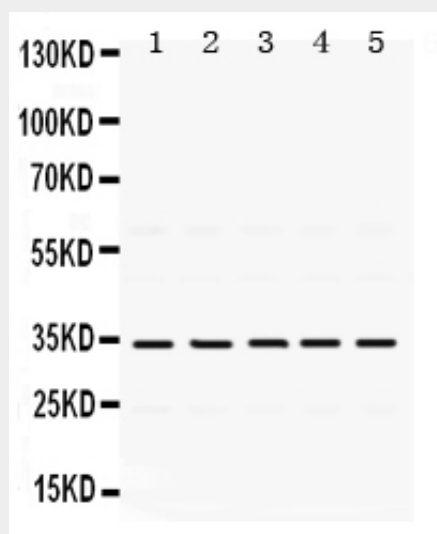
Secreted, extracellular space, extracellular matrix

### Anti-TIMP-3 Antibody - Protocols

Provided below are standard protocols that you may find useful for product applications.

- [Western Blot](#)
- [Blocking Peptides](#)
- [Dot Blot](#)
- [Immunohistochemistry](#)
- [Immunofluorescence](#)
- [Immunoprecipitation](#)
- [Flow Cytometry](#)
- [Cell Culture](#)

### Anti-TIMP-3 Antibody - Images



Anti- TIMP3 Picoband antibody, ABO12517, Western blottingAll lanes: Anti TIMP3 (ABO12517) at 0.5ug/mlLane 1: Rat Kidney Tissue Lysate at 50ugLane 2: Mouse Ovary Tissue Lysate at 50ugLane 3: HELA Whole Cell Lysate at 40ugLane 4: MCF-7 Whole Cell Lysate at 40ugLane 5: SMMC Whole Cell Lysate at 40ugPredicted bind size: 34KDObserved bind size: 34KD

### **Anti-TIMP-3 Antibody - Background**

Metalloproteinase inhibitor 3 is a protein that in humans is encoded by the TIMP3 gene. It is mapped to 22q12.1-q13.2. This gene belongs to the tissue inhibitor of metalloproteinases gene family. The proteins encoded by this gene family are inhibitors of the matrix metalloproteinases, a group of peptidases involved in degradation of the extracellular matrix (ECM). Expression of this gene is induced in response to mitogenic stimulation and this netrin domain-containing protein is localized to the ECM. Mutations in this gene have been associated with the autosomal dominant disorder Sorsby's fundus dystrophy.