

Jagged 1 Antibody
Rabbit Polyclonal Antibody
Catalog # ABV10078**Specification**

Jagged 1 Antibody - Product Information

Application	WB
Primary Accession	Q63722
Reactivity	Human, Mouse
Host	Rabbit
Clonality	Polyclonal
Isotype	Rabbit IgG
Calculated MW	134326

Jagged 1 Antibody - Additional Information**Gene ID** 29146Positive Control
Application & Usage**3T3 cell lysate**
Western Blot analysis (1-4 µg/ml).
However, the optimal concentrations
should be determined individually.
Blocking peptide is available separately.**Other Names**
CD339**Target/Specificity**
Jagged 1**Antibody Form**
Liquid**Appearance**
Colorless liquid**Formulation**
100 µg (0.5 mg/ml) affinity purified rabbit anti- Jagged 1 polyclonal antibody in phosphate buffered saline (PBS), pH 7.2, containing 30% glycerol, 0.5% BSA, 5 mM EDTA and 0.01% thimerosal.**Handling**
The antibody solution should be gently mixed before use.**Reconstitution & Storage**
-20 °C**Background Descriptions****Precautions**
Jagged 1 Antibody is for research use only and not for use in diagnostic or therapeutic procedures.

Jagged 1 Antibody - Protein Information

Name Jag1

Function

Ligand for multiple Notch receptors and involved in the mediation of Notch signaling. May be involved in cell-fate decisions during hematopoiesis. Enhances fibroblast growth factor-induced angiogenesis (in vitro). Seems to be involved in early and late stages of mammalian cardiovascular development. Inhibits myoblast differentiation. May regulate fibroblast growth factor-induced angiogenesis.

Cellular Location

Membrane; Single-pass type I membrane protein. Cell membrane
{ECO:0000250|UniProtKB:P78504}

Tissue Location

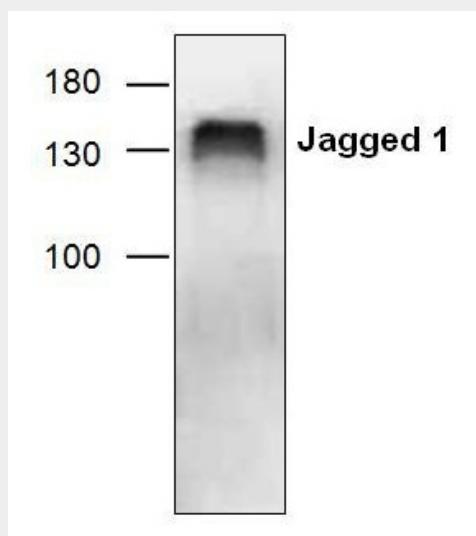
Widely expressed in a variety of tissues.

Jagged 1 Antibody - Protocols

Provided below are standard protocols that you may find useful for product applications.

- [Western Blot](#)
- [Blocking Peptides](#)
- [Dot Blot](#)
- [Immunohistochemistry](#)
- [Immunofluorescence](#)
- [Immunoprecipitation](#)
- [Flow Cytometry](#)
- [Cell Culture](#)

Jagged 1 Antibody - Images



Western blot analysis of Jagged 1 using 3T3 cell lysate.

Jagged 1 Antibody - Background

Jagged belongs to the DeltaSerrateLag2 (DSL) family of ligands that activate LIN12/Notch proteins. Ligands for Notch include Jagged1, Jagged2 and Delta. Jagged 1 is involved in mammalian cardiovascular development and in cell-fate decisions during hematopoiesis. Mutation in Jagged1 is associated with an autosomal dominant disorder known as Alagille syndrome and Familial Tetralogy of Fallot a form of complex congenital heart disease.