

Rat Pancreatic Amylase Antibody (Clone RPA-B5)
Mouse Monoclonal Antibody
Catalog # ABV10079**Specification**

Rat Pancreatic Amylase Antibody (Clone RPA-B5) - Product Information

Application	E, WB
Primary Accession	P00689
Reactivity	Rat
Host	Mouse
Clonality	Monoclonal
Isotype	Mouse IgG1
Calculated MW	57177

Rat Pancreatic Amylase Antibody (Clone RPA-B5) - Additional Information**Gene ID** 497039

Application & Usage	The antibody can be used for indirect ELISA and WB.
---------------------	---

Other Names

Amylase, pancreatic amylase, rat pancreatic amylase

Target/Specificity

Pancreatic Amylase

Antibody Form

Liquid

Appearance

Colorless liquid

Formulation

100 µg (1.0 mg/ml) purified mouse monoclonal antibody supplied in PBS with 0.05% (W/V) sodium azide.

Handling

The antibody solution should be gently mixed before use.

Reconstitution & Storage

-20 °C

Background Descriptions**Precautions**

Rat Pancreatic Amylase Antibody (Clone RPA-B5) is for research use only and not for use in diagnostic or therapeutic procedures.

Rat Pancreatic Amylase Antibody (Clone RPA-B5) - Protein Information

Name Amy2

Cellular Location

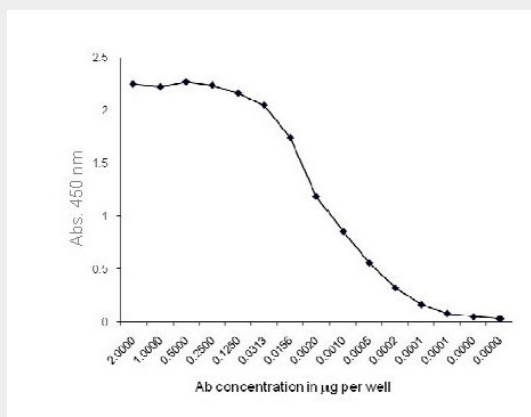
Secreted, extracellular space.

Rat Pancreatic Amylase Antibody (Clone RPA-B5) - Protocols

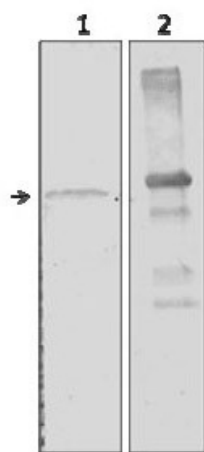
Provided below are standard protocols that you may find useful for product applications.

- [Western Blot](#)
- [Blocking Peptides](#)
- [Dot Blot](#)
- [Immunohistochemistry](#)
- [Immunofluorescence](#)
- [Immunoprecipitation](#)
- [Flow Cytometry](#)
- [Cell Culture](#)

Rat Pancreatic Amylase Antibody (Clone RPA-B5) - Images



Serial dilution of the antibody, starting with 2 µg/well was done to check for the affinity. 1 mg of coated antigen can be sensitively detected by anti-rat Pancreatic Amylase antibody, clone B5 used at 30 pg/well concentration.



Pancreatic tissue lysate (lane 1) and recombinant Amylase (lane 2). The antibody detects the Rat Amylase at the expected molecular weight i.e. at ~ 54 kDa in the pancreatic lysate and recombinant protein at ~ 60 kDa.

Rat Pancreatic Amylase Antibody (Clone RPA-B5) - Background

Pancreatic amylase is a digestive enzyme secreted by pancreas into the intestine. It consists of a single polypeptide chain with a molecular weight of 54 kDa. Measurement of amylase concentrations in serum is a diagnostic test for various pancreatic disorders.