

PYY3-36 Antibody (Clone RPY-B12)
Mouse Monoclonal Antibody
Catalog # ABV10084**Specification**

PYY3-36 Antibody (Clone RPY-B12) - Product Information

Application	E, IF
Primary Accession	P10631
Reactivity	Rat
Host	Mouse
Clonality	Monoclonal
Isotype	Mouse IgG1
Calculated MW	11121

PYY3-36 Antibody (Clone RPY-B12) - Additional Information**Gene ID** 287730Positive Control
Application & Usage**Rat Colon Tissue**
The antibody can be used for indirect
ELISA for detection of antigen
(recommended use at 1-2 µg/ml) and
Immunofluorescence (recommended use at
20-40 µg/ml).**Other Names**
PYY3-36, Peptide YY**Target/Specificity**
PYY3-36**Antibody Form**
Liquid**Appearance**
Colorless liquid**Formulation**
100 µg (0.5 mg/ml) affinity purified mouse monoclonal antibody in phosphate-buffered saline (PBS) containing 30% glycerol, 0.5% BSA, and 0.01% thimerosal.**Handling**
The antibody solution should be gently mixed before use.**Reconstitution & Storage**
-20 °C**Background Descriptions****Precautions**

PYY3-36 Antibody (Clone RPY-B12) is for research use only and not for use in diagnostic or therapeutic procedures.

PYY3-36 Antibody (Clone RPY-B12) - Protein Information

Name Pyy

Function

This gut peptide inhibits exocrine pancreatic secretion, has a vasoconstrictory action and inhibits jejunal and colonic mobility.

Cellular Location

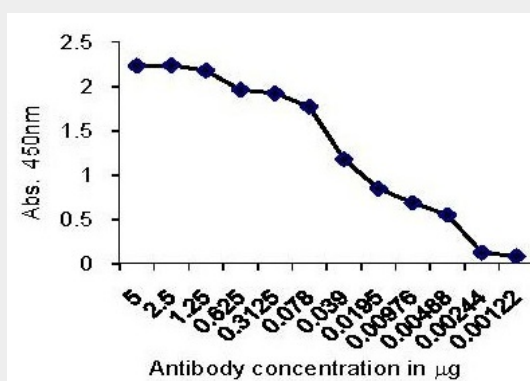
Secreted.

PYY3-36 Antibody (Clone RPY-B12) - Protocols

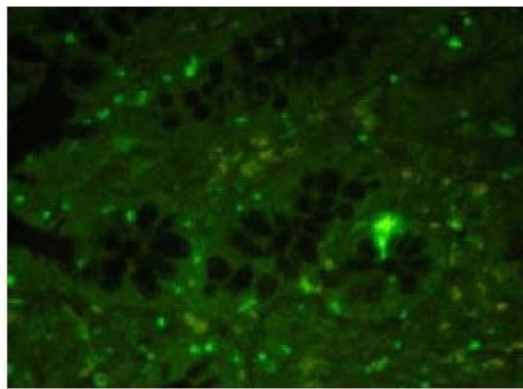
Provided below are standard protocols that you may find useful for product applications.

- [Western Blot](#)
- [Blocking Peptides](#)
- [Dot Blot](#)
- [Immunohistochemistry](#)
- [Immunofluorescence](#)
- [Immunoprecipitation](#)
- [Flow Cytometry](#)
- [Cell Culture](#)

PYY3-36 Antibody (Clone RPY-B12) - Images



Serial dilution of the antibody starting with 5 μg /well was done to check for the affinity. 0.5 μg of coated antigen can be sensitively detected by anti-rat PYY3-36 antibody used at 3 ng/well.



Antigen retrieval was done with Tris-EDTA, pH 9.0 in pressure cooker. Endocrine cells from the mucosal layer of colon labeled by the antibody display optimum cytoplasmic staining.

PYY3-36 Antibody (Clone RPY-B12) - Background

Peptide YY (PYY), a member of a neuropeptide Y (NPY family) is a 36 AA peptide secreted from the L cells of the gastrointestinal tract in response to food intake. The release of PYY is stimulated by nutrients within the lower small intestine and the colon, which in turn decreases food intake by inhibiting gut motility. It acts as an "ileal brake" to cause a sense of satiety. PYY3-36 is produced by the dipeptidyl peptidase-IV digestion of polypeptide YY (PYY).