

LSD1/AOF2 Antibody
Rabbit Polyclonal Antibody
Catalog # ABV10102**Specification**

LSD1/AOF2 Antibody - Product Information

Application	WB
Primary Accession	B3TT9
Other Accession	NP_001123570.1
Reactivity	Human, Mouse, Rat
Host	Rabbit
Clonality	Polyclonal
Isotype	Rabbit IgG

LSD1/AOF2 Antibody - Additional Information

Positive Control	Jurkat cell lysate
Application & Usage	Western blotting (2-4 µg/ml). However, the optimal conditions should be determined individually.

Other Names

Lysine-specific histone demethylase 1A (BRA35-HDAC complex protein BHC110)
(Flavin-containing amine oxidase domain-containing protein 2)

Target/Specificity

LSD1/AOF2

Antibody Form

Liquid

Appearance

Colorless liquid

Formulation

100 µg (0.5 mg/ml) affinity purified rabbit anti- LSD1/AOF2 polyclonal antibody in phosphate buffered saline (PBS), pH 7.2, containing 30% glycerol, 0.5% BSA, 5 mM EDTA and 0.01% thimerosal.

Handling

The antibody solution should be gently mixed before use.

Reconstitution & Storage

-20 °C

Background Descriptions**Precautions**

LSD1/AOF2 Antibody is for research use only and not for use in diagnostic or therapeutic procedures.

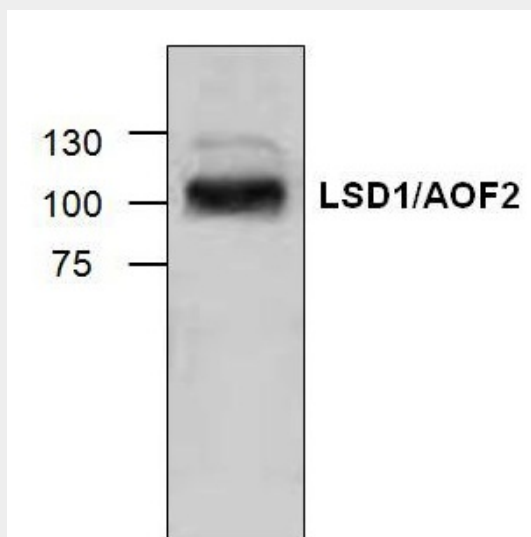
LSD1/AOF2 Antibody - Protein Information

LSD1/AOF2 Antibody - Protocols

Provided below are standard protocols that you may find useful for product applications.

- [Western Blot](#)
- [Blocking Peptides](#)
- [Dot Blot](#)
- [Immunohistochemistry](#)
- [Immunofluorescence](#)
- [Immunoprecipitation](#)
- [Flow Cytometry](#)
- [Cell Culture](#)

LSD1/AOF2 Antibody - Images



Western blot analysis of LSD1/AOF2 using Jurkat cell lysate

LSD1/AOF2 Antibody - Background

Lysine-specific demethylase 1 (LSD1) is also known as AOF2, is a nuclear amine oxidase. LSD1 contains a Swirl domain, a FAD-binding motif and an amine oxidase domain that can act as a histone demethylase as well as a transcription cofactor. LSD1 activity is inhibited by the amine oxidase inhibitors pargyline, deprenyl, clorgyline and tranylcypromine.