

BAFF Antibody
Rabbit Polyclonal Antibody
Catalog # ABV10167**Specification**

BAFF Antibody - Product Information

Application	WB
Primary Accession	Q9Y275
Reactivity	Human
Host	Rabbit
Clonality	Polyclonal
Isotype	Rabbit IgG
Calculated MW	31223

BAFF Antibody - Additional Information**Gene ID** 10673

Application & Usage	Western blotting (0.5-4 µg/ml). However, the optimal conditions should be determined individually. A 32 kDa full length BAFF and the 18 kDa cleavage fragment can be detected.
---------------------	---

Other Names

TALL-1, THANK, BLYS, TNFSF13B, TNFSF20, CD257, DTL, TALL-1, ZTNF4

Target/Specificity

BAFF

Antibody Form

Liquid

Appearance

Colorless liquid

Formulation

100 µg (0.5 mg/ml) affinity purified rabbit anti-BAFF polyclonal antibody in phosphate buffered saline (PBS), pH 7.2, containing 30% glycerol, 0.5% BSA, 0.01% thimerosal.

Handling

The antibody solution should be gently mixed before use.

Reconstitution & Storage

-20 °C

Background Descriptions**Precautions**

BAFF Antibody is for research use only and not for use in diagnostic or therapeutic procedures.

BAFF Antibody - Protein Information

Name TNFSF13B

Synonyms BAFF, BLYS, TALL1, TNFSF20, ZTNF4

Function

Cytokine that binds to TNFRSF13B/TACI and TNFRSF17/BCMA. TNFSF13/APRIL binds to the same 2 receptors. Together, they form a 2 ligands -2 receptors pathway involved in the stimulation of B- and T- cell function and the regulation of humoral immunity. A third B-cell specific BAFF-receptor (BAFFR/BR3) promotes the survival of mature B- cells and the B-cell response.

Cellular Location

Cell membrane; Single-pass type II membrane protein

Tissue Location

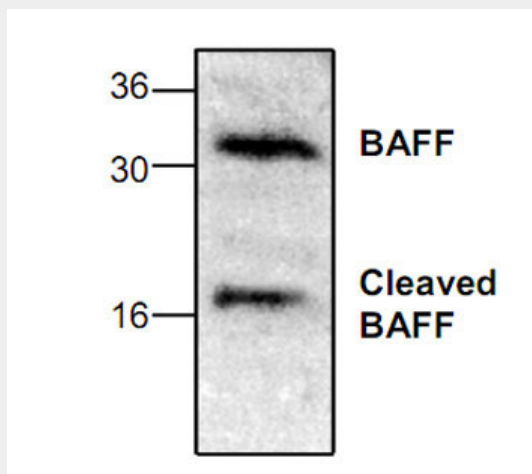
Abundantly expressed in peripheral blood Leukocytes and is specifically expressed in monocytes and macrophages. Also found in the spleen, lymph node, bone marrow, T-cells and dendritic cells. A lower expression seen in placenta, heart, lung, fetal liver, thymus, and pancreas. Isoform 2 is expressed in many myeloid cell lines

BAFF Antibody - Protocols

Provided below are standard protocols that you may find useful for product applications.

- [Western Blot](#)
- [Blocking Peptides](#)
- [Dot Blot](#)
- [Immunohistochemistry](#)
- [Immunofluorescence](#)
- [Immunoprecipitation](#)
- [Flow Cytometry](#)
- [Cell Culture](#)

BAFF Antibody - Images



Western blot analysis of BAFF expression with Jurkat cell lysate.

BAFF Antibody - Background

BAFF (for B cell Activating Factor) is a novel member in the TNF family. BAFF/BLyS was characterized as a B cell stimulator since it induced B cell proliferation and immunoglobulin secretion. Two receptors for BAFF were recently identified and designated TACI and BCMA. BAFF and its receptors are involved in the development of systemic lupus erythaematosus and other B cell associated autoimmune diseases. Like TNF- α and TRAIL, THANK was shown to activate NF- κ B and c-Jun N-terminal kinase (JNK) and to induce apoptosis.