

MBD2a Antibody
Rabbit Polyclonal Antibody
Catalog # ABV10184**Specification**

MBD2a Antibody - Product Information

Application	WB
Primary Accession	BOBNM2
Other Accession	BOBNM2
Reactivity	Human, Mouse, Rat
Host	Rabbit
Clonality	Polyclonal
Isotype	Rabbit IgG

MBD2a Antibody - Additional Information

Positive Control	Jurkat cell lysate
Application & Usage	The antibody can be used in Western Blot analysis (0.5-4 µg/ml). However, the optimal concentrations should be determined individually. Blocking peptide is available separately.

Other Names

Methyl-CpG-binding domain protein 2

Target/Specificity

MBD2a

Antibody Form

Liquid

Appearance

Colorless liquid

Formulation

100 µg (0.5 mg/ml) affinity purified rabbit anti- MBD2a polyclonal antibody in phosphate buffered saline (PBS), pH 7.2, containing 30% glycerol, 0.5% BSA, 5 mM EDTA and 0.01% thimerosal.

Handling

The antibody solution should be gently mixed before use.

Reconstitution & Storage

-20 °C

Background Descriptions**Precautions**

MBD2a Antibody is for research use only and not for use in diagnostic or therapeutic procedures.

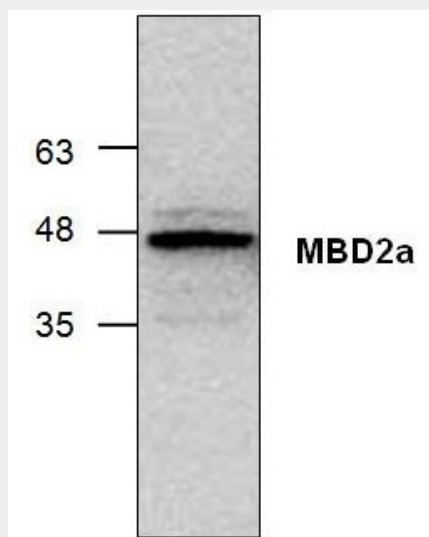
MBD2a Antibody - Protein Information

MBD2a Antibody - Protocols

Provided below are standard protocols that you may find useful for product applications.

- [Western Blot](#)
- [Blocking Peptides](#)
- [Dot Blot](#)
- [Immunohistochemistry](#)
- [Immunofluorescence](#)
- [Immunoprecipitation](#)
- [Flow Cytometry](#)
- [Cell Culture](#)

MBD2a Antibody - Images



Western blot analysis of MBD2a using Jurkat cell lysate.

MBD2a Antibody - Background

The MBD family of proteins includes MeCP2, MBD1, MBD2, MBD3 and MBD4. MBD2 is highly similar to MBD3 but only MBD2 targets the MeCP1 complex to methylate DNA. MBD2 has two isoforms, MBD2a and MBD2b. MBD2a is a 414 amino acids protein, whereas MBD2b lacks the 152 amino acids N-terminal extension. MBD2a interacts with RNA helicase A to enhance CREB-dependent gene expression.