

Smac/DIABLO Antibody
Rabbit Polyclonal Antibody
Catalog # ABV10230**Specification**

Smac/DIABLO Antibody - Product Information

Application	WB
Primary Accession	O9J1Q3
Reactivity	Human, Mouse, Rat
Host	Rabbit
Clonality	Polyclonal
Isotype	Rabbit IgG
Calculated MW	26820

Smac/DIABLO Antibody - Additional Information**Gene ID** 66593

Application & Usage	Western blotting (0.5-4 µg/ml) and Immunohistochemistry (5-20 µg/ml). However, the optimal conditions should be determined individually. The immunoaffinity purified antibody detects the 25 kDa Smac/DIABLO in samples from human, mouse, and rat origins.
---------------------	---

Other Names

SMAC, SMAC3, DIABLO, DIABLO-S , FLJ10537, FLJ25049, 0610041G12Rik

Target/Specificity

Smac/DIABLO

Antibody Form

Liquid

Appearance

Colorless liquid

Formulation

100 µg (0.5 mg/ml) peptide affinity purified rabbit anti-Smac/DIABLO polyclonal antibody in PBS (pH 7.2) containing 30% glycerol, 0.5% BSA, 0.01% thimerosal.

Handling

The antibody solution should be gently mixed before use.

Reconstitution & Storage

-20 °C

Background Descriptions

Precautions

Smac/DIABLO Antibody is for research use only and not for use in diagnostic or therapeutic procedures.

Smac/DIABLO Antibody - Protein Information

Name Diablo {ECO:0000312|MGI:MGI:1913843}

Function

Promotes apoptosis by activating caspases in the cytochrome c/Apaf-1/caspase-9 pathway. Acts by opposing the inhibitory activity of inhibitor of apoptosis proteins (IAP). Inhibits the activity of BIRC6/bruce by inhibiting its binding to caspases (By similarity).

Cellular Location

Mitochondrion. Cytoplasm, cytosol {ECO:0000250|UniProtKB:Q9NR28}. Note=Released into the cytosol in a PARL-dependent manner when cells undergo apoptosis {ECO:0000250|UniProtKB:Q9NR28}

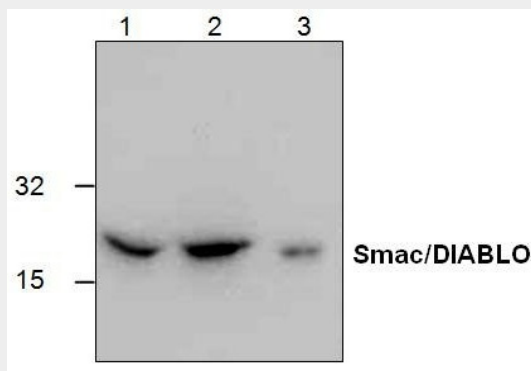
Tissue Location

Highest expression found in heart, liver, kidney and testis.

Smac/DIABLO Antibody - Protocols

Provided below are standard protocols that you may find useful for product applications.

- [Western Blot](#)
- [Blocking Peptides](#)
- [Dot Blot](#)
- [Immunohistochemistry](#)
- [Immunofluorescence](#)
- [Immunoprecipitation](#)
- [Flow Cytometry](#)
- [Cell Culture](#)

Smac/DIABLO Antibody - Images

Western blot analysis of Smac/DIABLO using Rat kidney tissue lysate (Lane 1), 3T3 cell lysate (Lane 2) and Jurkat cell lysate (Lane 3).

Smac/DIABLO Antibody - Background

Smac/DIABLO is a mitochondrial protein that is released along with cytochrome c during apoptosis and activates cytochrome c/Apaf-1/caspase-9 pathway. Smac/DIABLO binds to IAPs (Inhibitor of Apoptosis Proteins) and neutralizes the inhibitory effect of IAPs. Analysis of the structural basis of Smac/DIABLO has revealed that the N-terminal amino acids are required for Smac/DIABLO to bind to IAPs and activation of caspases.