

**Profilin-1 Antibody**  
**Rabbit Polyclonal Antibody**  
**Catalog # ABV10232****Specification**

---

**Profilin-1 Antibody - Product Information**

Application	WB
Primary Accession	<a href="#">P62963</a>
Reactivity	Human, Mouse, Rat, Bovine
Host	Rabbit
Clonality	Polyclonal
Isotype	Rabbit IgG
Calculated MW	14957

**Profilin-1 Antibody - Additional Information****Gene ID** 64303

Positive Control	Jurkat cell lysate, 3T3 cell lysate, rat kidney tissue lysate
Application & Usage	The antibody can be used in Western Blot analysis (1-4 µg/ml). However, the optimal concentrations should be determined individually. Blocking peptide is available separately. Expected band is ~15 kDa.

**Other Names**

Profilin I, Pfn1, Epididymis tissue protein Li 184a

**Target/Specificity**

Profilin-1

**Antibody Form**

Liquid

**Appearance**

Colorless liquid

**Formulation**

100 µg (0.5 mg/ml) affinity purified rabbit anti-Profilin-1 polyclonal antibody in phosphate buffered saline (PBS), pH 7.2, containing 30% glycerol, 0.5% BSA, 5 mM EDTA and 0.01% thimerosal.

**Handling**

The antibody solution should be gently mixed before use.

**Reconstitution & Storage**

-20 °C

**Background Descriptions**

**Precautions**

Profilin-1 Antibody is for research use only and not for use in diagnostic or therapeutic procedures.

**Profilin-1 Antibody - Protein Information**

**Name** Pfn1

**Function**

Binds to actin and affects the structure of the cytoskeleton. At high concentrations, profilin prevents the polymerization of actin, whereas it enhances it at low concentrations. By binding to PIP2, it inhibits the formation of IP3 and DG. Inhibits androgen receptor (AR) and HTT aggregation and binding of G-actin is essential for its inhibition of AR (By similarity).

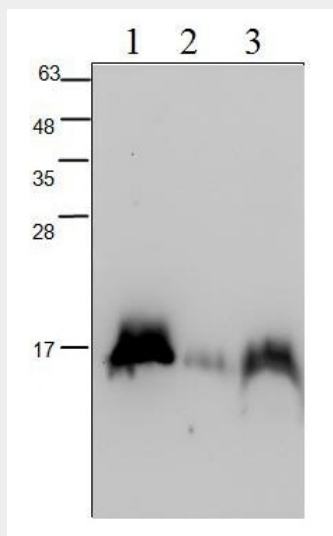
**Cellular Location**

Cytoplasm, cytoskeleton.

**Profilin-1 Antibody - Protocols**

Provided below are standard protocols that you may find useful for product applications.

- [Western Blot](#)
- [Blocking Peptides](#)
- [Dot Blot](#)
- [Immunohistochemistry](#)
- [Immunofluorescence](#)
- [Immunoprecipitation](#)
- [Flow Cytometry](#)
- [Cell Culture](#)

**Profilin-1 Antibody - Images**

Western blot analysis of Profilin 1 using lysate from Jurkat cells (Lane 1), 3T3 cells (Lane 2) and rat kidney tissue lysate (Lane 3).

**Profilin-1 Antibody - Background**

Profilin is a protein which maintains and shapes cytoskeleton by binding to actin. Profilin 1 has function in breast cancer cell motility, radial migration and glial cell adhesion.