

GSAP Antibody
Rabbit Polyclonal Antibody
Catalog # ABV10234**Specification**

GSAP Antibody - Product Information

Application	WB
Primary Accession	A4D1B5
Reactivity	Human, Mouse, Rat
Host	Rabbit
Clonality	Polyclonal
Isotype	Rabbit IgG
Calculated MW	97802

GSAP Antibody - Additional Information**Gene ID** 54103

Positive Control	Western blot: Mouse 3T3 cell lysate
Application & Usage	Western Blot analysis (1-4 µg/ml).
Other Names	
PION, Gamma-secretase-activating protein, Protein pigeon homolog	

Target/Specificity
GSAP**Antibody Form**
Liquid**Appearance**
Colorless liquid**Formulation**
100 µg (0.5 mg/ml) polyclonal antibody in PBS pH 7.2, containing 30% glycerol, 0.5% BSA, 5mM EDTA and 0.01% thimerosal.**Handling**
The antibody solution should be gently mixed before use.**Reconstitution & Storage**
-20 °C**Background Descriptions****Precautions**
GSAP Antibody is for research use only and not for use in diagnostic or therapeutic procedures.**GSAP Antibody - Protein Information**

Name GSAP

Synonyms PION

Function

Regulator of gamma-secretase activity, which specifically activates the production of amyloid-beta protein (amyloid-beta protein 40 and amyloid-beta protein 42), without affecting the cleavage of other gamma-secretase targets such as Notch. The gamma-secretase complex is an endoprotease complex that catalyzes the intramembrane cleavage of integral membrane proteins such as Notch receptors and APP (amyloid-beta precursor protein). Specifically promotes the gamma- cleavage of APP CTF-alpha (also named APP-CTF) by the gamma-secretase complex to generate amyloid-beta, while it reduces the epsilon-cleavage of APP CTF-alpha, leading to a low production of AICD.

Cellular Location

Golgi apparatus, trans-Golgi network

Tissue Location

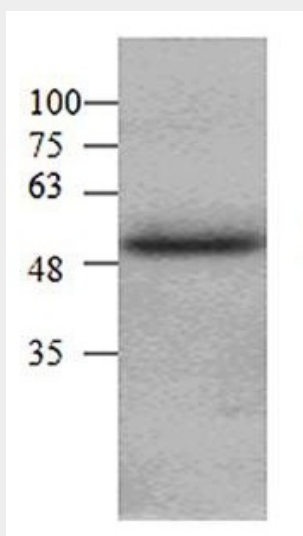
Widely expressed..

GSAP Antibody - Protocols

Provided below are standard protocols that you may find useful for product applications.

- [Western Blot](#)
- [Blocking Peptides](#)
- [Dot Blot](#)
- [Immunohistochemistry](#)
- [Immunofluorescence](#)
- [Immunoprecipitation](#)
- [Flow Cytometry](#)
- [Cell Culture](#)

GSAP Antibody - Images



Western blot analysis with mouse 3T3 cells

GSAP Antibody - Background

GSAP, gamma-secretase activating protein interacts with gamma secretase which chops up the amyloid precursor protein to senile plaques in Alzheimer's disease. GSAP was found to increase the production amyloid peptide. Immunohistochemistry to identify GSAP in brain can demonstrate its abundance in certain regions of damage, and is usually morphologically changed throughout the progression of Alzheimer's disease. GSAP can be used as a qualitative biomarker of Alzheimer's disease progression, and is regularly considered one of the best targets of therapies to diminish the effects of Alzheimer's disease in affected individuals.