

Cathepsin K Antibody
Rabbit Polyclonal Antibody
Catalog # ABV10272**Specification**

Cathepsin K Antibody - Product Information

Application	WB
Primary Accession	O35186
Other Accession	NP_113748
Reactivity	Human, Mouse, Rat
Host	Rabbit
Clonality	Polyclonal
Isotype	Rabbit IgG
Calculated MW	36791

Cathepsin K Antibody - Additional Information**Gene ID** 29175

Application & Usage	Western blotting (0.5-4 µg/ml), immunoprecipitation, and Immunohistochemistry. However, the optimal conditions should be determined individually. Detects 43 kDa cathepsin K of human, mouse, and rat origin.
---------------------	---

Other Names

CTSK, CTS02, CTSO, CTSO1, CTSO2, MGC23107, PKND, PYCD

Target/Specificity

Cathepsin K

Antibody Form

Liquid

Appearance

Colorless liquid

Formulation

100 µg (0.5 mg/ml) Protein A purified rabbit anti-cathepsin K polyclonal antibody in phosphate buffered saline (PBS), pH 7.2, containing 30% glycerol, 0.5% BSA, 0.01% thimerosal.

Handling

The antibody solution should be gently mixed before use.

Reconstitution & Storage

-20 °C

Background Descriptions

Precautions

Cathepsin K Antibody is for research use only and not for use in diagnostic or therapeutic procedures.

Cathepsin K Antibody - Protein Information

Name Ctsk

Function

Thiol protease involved in osteoclastic bone resorption and may participate partially in the disorder of bone remodeling. Displays potent endoprotease activity against fibrinogen at acid pH. May play an important role in extracellular matrix degradation. Involved in the release of thyroid hormone thyroxine (T4) by limited proteolysis of TG/thyroglobulin in the thyroid follicle lumen.

Cellular Location

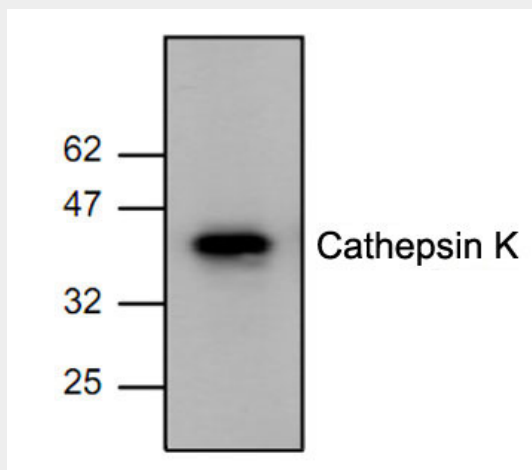
Lysosome {ECO:0000250|UniProtKB:P43235}. Secreted {ECO:0000250|UniProtKB:P43235}. Apical cell membrane {ECO:0000250|UniProtKB:P43235}; Peripheral membrane protein {ECO:0000250|UniProtKB:P43235}; Extracellular side {ECO:0000250|UniProtKB:P43235}. Note=Localizes to the lumen of thyroid follicles and to the apical membrane of thyroid epithelial cells {ECO:0000250|UniProtKB:P43235}

Cathepsin K Antibody - Protocols

Provided below are standard protocols that you may find useful for product applications.

- [Western Blot](#)
- [Blocking Peptides](#)
- [Dot Blot](#)
- [Immunohistochemistry](#)
- [Immunofluorescence](#)
- [Immunoprecipitation](#)
- [Flow Cytometry](#)
- [Cell Culture](#)

Cathepsin K Antibody - Images



Western blot analysis of Cathepsin K expression in MCF7 cell lysate.

Cathepsin K Antibody - Background

Cathepsin family of proteases contains several diverse classes of enzymes. The cysteine protease class comprises cathepsin B, H, K, L, O, and S. The aspartyl protease class contains cathepsin D and E. Cathepsin G belongs to the serine protease class. Cathepsins are involved in various cellular events such as peptide biosynthesis, protein degradation, and apoptosis. Cathepsin K expression is highest in bone, cartilage, and skeletal muscle