

Lck Antibody
Rabbit Polyclonal Antibody
Catalog # ABV10369**Specification**

Lck Antibody - Product Information

Application	WB
Primary Accession	P06239
Reactivity	Human, Mouse, Rat
Host	Rabbit
Clonality	Polyclonal
Isotype	Rabbit IgG
Calculated MW	58001

Lck Antibody - Additional Information**Gene ID** 3932

Application & Usage	Western blotting (0.5-4 µg/ml), immunoprecipitation (20-25 µg/ml), and Immunohistochemistry (20-25 µg/ml). However, the optimal conditions should be determined individually. The antibody detects 56 kDa Lck protein from samples of human, mouse, rat origins. A low band ~25 kDa can also be detected, presumably to be a cleavage fragment of Lck.
---------------------	--

Other Names

LCK , p56-LCK , p56lck , YT16 , pp58lck , LSK

Target/Specificity

Lck

Antibody Form

Liquid

Appearance

Colorless liquid

Formulation

100 µg (0.5 mg/ml) antigen affinity purified rabbit polyclonal antibody in phosphate buffered saline (PBS), pH 7.2, containing 30% glycerol, 0.5% BSA, 0.01% thimerosal.

Handling

The antibody solution should be gently mixed before use.

Reconstitution & Storage

-20 °C

Background Descriptions

Precautions

Lck Antibody is for research use only and not for use in diagnostic or therapeutic procedures.

Lck Antibody - Protein Information**Name** LCK**Function**

Non-receptor tyrosine-protein kinase that plays an essential role in the selection and maturation of developing T-cells in the thymus and in the function of mature T-cells. Plays a key role in T-cell antigen receptor (TCR)-linked signal transduction pathways. Constitutively associated with the cytoplasmic portions of the CD4 and CD8 surface receptors. Association of the TCR with a peptide antigen-bound MHC complex facilitates the interaction of CD4 and CD8 with MHC class II and class I molecules, respectively, thereby recruiting the associated LCK protein to the vicinity of the TCR/CD3 complex. LCK then phosphorylates tyrosine residues within the immunoreceptor tyrosine-based activation motifs (ITAM) of the cytoplasmic tails of the TCR- γ chains and CD3 subunits, initiating the TCR/CD3 signaling pathway. Once stimulated, the TCR recruits the tyrosine kinase ZAP70, that becomes phosphorylated and activated by LCK. Following this, a large number of signaling molecules are recruited, ultimately leading to lymphokine production. LCK also contributes to signaling by other receptor molecules. Associates directly with the cytoplasmic tail of CD2, which leads to hyperphosphorylation and activation of LCK. Also plays a role in the IL2 receptor-linked signaling pathway that controls the T-cell proliferative response. Binding of IL2 to its receptor results in increased activity of LCK. Is expressed at all stages of thymocyte development and is required for the regulation of maturation events that are governed by both pre-TCR and mature $\alpha\beta$ TCR. Phosphorylates other substrates including RUNX3, PTK2B/PYK2, the microtubule-associated protein MAPT, RHOH or TYROBP. Interacts with FYB2 (PubMed: 27335501).

Cellular Location

Cell membrane; Lipid-anchor; Cytoplasmic side Cytoplasm, cytosol. Note=Present in lipid rafts in an inactive form.

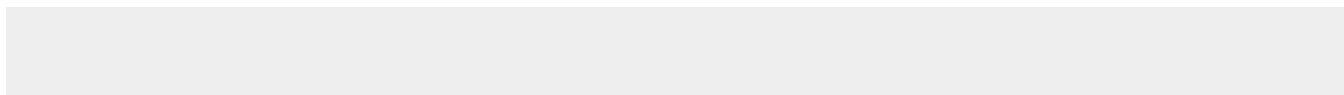
Tissue Location

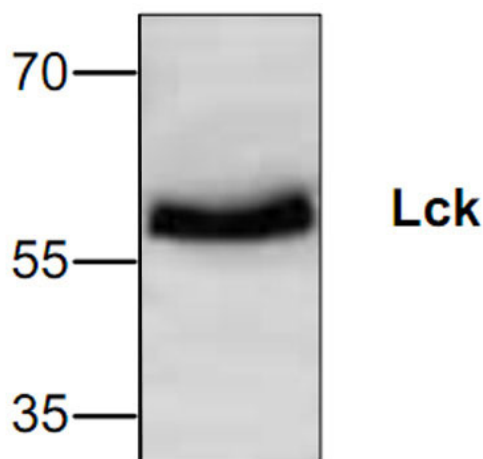
Expressed specifically in lymphoid cells.

Lck Antibody - Protocols

Provided below are standard protocols that you may find useful for product applications.

- [Western Blot](#)
- [Blocking Peptides](#)
- [Dot Blot](#)
- [Immunohistochemistry](#)
- [Immunofluorescence](#)
- [Immunoprecipitation](#)
- [Flow Cytometry](#)
- [Cell Culture](#)

Lck Antibody - Images



Western blot analysis of Lck expression in rat kidney tissue lysate.

Lck Antibody - Background

Lck is a membrane associated tyrosine protein kinases. The Lck gene has been shown to undergo rearrangement and overexpression in some murine lymphomas. In human studies, it has been demonstrated that the Lck gene is localized to a site in the genome which undergoes frequent chromosomal abnormalities in lymphomas and neuroblastomas. Resting T cells contain high levels of the Lck protein and mRNA both of which decline upon activation of the T cells. These and other observations suggest that alterations in Lck expression may contribute to the pathogenesis of some types of neoplastic disease.