

ROBO4 Antibody
Rabbit Polyclonal Antibody
Catalog # ABV10470**Specification**

ROBO4 Antibody - Product Information

Application	WB
Primary Accession	Q80W87
Reactivity	Human
Host	Rabbit
Clonality	Polyclonal
Isotype	Rabbit IgG
Calculated MW	102580

ROBO4 Antibody - Additional Information

Application & Usage	Western blotting (1-4 µg/ml). However, the optimal conditions should be determined individually. The antibody detects the ROBO4 band in human samples.
---------------------	--

Other Names

UNQ421/PRO3674, ECSM4, FLJ20798, MGC133352, MGC133353, MRB

Target/Specificity

ROBO4

Antibody Form

Liquid

Appearance

Colorless liquid

Formulation

100 µg (0.5 mg/ml) affinity purified rabbit anti- ROBO4 polyclonal antibody in phosphate buffered saline (PBS), pH 7.2, containing 30% glycerol, 0.5% BSA, 5 mM EDTA and 0.01% thimerosal.

Handling

The antibody solution should be gently mixed before use.

Reconstitution & Storage

-20 °C

Background Descriptions**Precautions**

ROBO4 Antibody is for research use only and not for use in diagnostic or therapeutic procedures.

ROBO4 Antibody - Protein Information

Name Robo4

Function

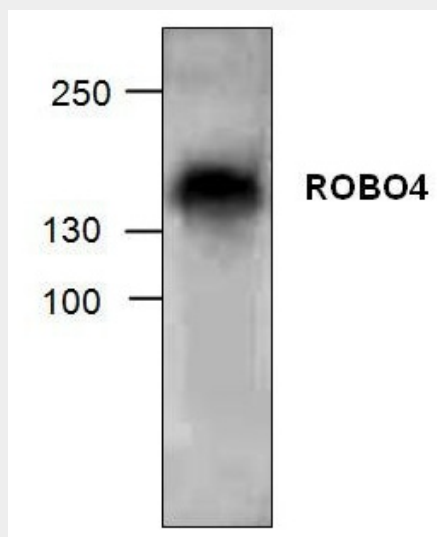
Receptor for Slit proteins, at least for SLIT2, and seems to be involved in angiogenesis and vascular patterning. May mediate the inhibition of primary endothelial cell migration by Slit proteins (By similarity). Involved in the maintenance of endothelial barrier organization and function (By similarity).

ROBO4 Antibody - Protocols

Provided below are standard protocols that you may find useful for product applications.

- [Western Blot](#)
- [Blocking Peptides](#)
- [Dot Blot](#)
- [Immunohistochemistry](#)
- [Immunofluorescence](#)
- [Immunoprecipitation](#)
- [Flow Cytometry](#)
- [Cell Culture](#)

ROBO4 Antibody - Images



Western blot analysis of ROBO4 with Jurkat cell lysate.

ROBO4 Antibody - Background

ROBO4 contains two fibronectin type-III domains and two Ig-like C2-type domains. ROBO4 is predominantly expressed in vascular endothelium and is considered important for vascular development. ROBO4 is a receptor for Slit proteins and may mediate the inhibition of primary endothelial cell migration by Slit proteins.