

Vimentin Antibody
Rabbit Polyclonal Antibody
Catalog # ABV10478**Specification**

Vimentin Antibody - Product Information

Application	WB
Primary Accession	P08670
Reactivity	Human, Mouse, Rat, Chicken, Bovine
Host	Rabbit
Clonality	Polyclonal
Isotype	Rabbit IgG
Calculated MW	53652

Vimentin Antibody - Additional Information**Gene ID** 7431

Application & Usage	Western blotting (0.5-4 µg/ml), immunoprecipitation (10-20 µg/ml) and Immunohistochemistry (10-20 µg/ml). However, the optimal concentrations should be determined individually.
---------------------	--

Other Names

VIM , FLJ36605 , Vimentin , vimentin

Target/Specificity

Vimentin

Antibody Form

Liquid

Appearance

Colorless liquid

Formulation

100 µg (0.2mg/ml) rabbit anti-Vimentin polyclonal antibody in phosphate-buffered saline (PBS) containing 30% glycerol, 0.5% BSA and 0.01% thimerosal.

Handling

The antibody solution should be gently mixed before use.

Reconstitution & Storage

-20 °C

Background Descriptions**Precautions**

Vimentin Antibody is for research use only and not for use in diagnostic or therapeutic procedures.

Vimentin Antibody - Protein Information

Name VIM

Function

Vimentins are class-III intermediate filaments found in various non-epithelial cells, especially mesenchymal cells. Vimentin is attached to the nucleus, endoplasmic reticulum, and mitochondria, either laterally or terminally.

Cellular Location

Cytoplasm. Cytoplasm, cytoskeleton. Nucleus matrix {ECO:0000250|UniProtKB:P31000}. Cell membrane {ECO:0000250|UniProtKB:P20152}

Tissue Location

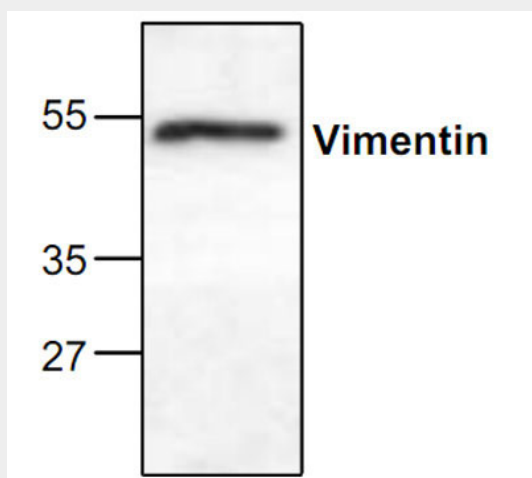
Highly expressed in fibroblasts, some expression in T- and B-lymphocytes, and little or no expression in Burkitt's lymphoma cell lines. Expressed in many hormone-independent mammary carcinoma cell lines.

Vimentin Antibody - Protocols

Provided below are standard protocols that you may find useful for product applications.

- [Western Blot](#)
- [Blocking Peptides](#)
- [Dot Blot](#)
- [Immunohistochemistry](#)
- [Immunofluorescence](#)
- [Immunoprecipitation](#)
- [Flow Cytometry](#)
- [Cell Culture](#)

Vimentin Antibody - Images



Western blot analysis of Vimentin expression in mouse small intestine tissue lysate

Vimentin Antibody - Background

Vimentin, an intermediate filament protein, is a general marker of cells originating in the mesenchyme. Vimentin is frequently co-expressed with other members of the intermediate filament family such as the cytokeratins, in neoplasm.