

**Syndecan-1 Antibody**  
**Rabbit Polyclonal Antibody**  
**Catalog # ABV10485****Specification**

---

**Syndecan-1 Antibody - Product Information**

Application	WB
Primary Accession	<a href="#">P18827</a>
Reactivity	Human, Mouse, Rat, Hamster
Host	Rabbit
Clonality	Polyclonal
Isotype	Rabbit IgG
Calculated MW	32462

**Syndecan-1 Antibody - Additional Information****Gene ID** 6382

Application & Usage	Western blotting (0.5-4 µg/ml), However, the optimal conditions should be determined individually. Other applications have not been tested. The antibody detects ~100 kDa Syndecan-1 from samples of human, mouse, rat, and hamster origins. Cross-reactivity to other species has not been determined.
---------------------	---

**Other Names**

SYND1 , SYND 1 , SDC1 , CD138 , CD138 , CD 138 , Syndecan1 , Syndecan 1 , SDC

**Target/Specificity**

Syndecan-1

**Antibody Form**

Liquid

**Appearance**

Colorless liquid

**Formulation**

100 µg (0.5 mg/ml) affinity purified rabbit anti-Syndecan-1 polyclonal antibody in phosphate buffered saline (PBS), pH 7.2, containing 30% glycerol, 0.5% BSA, 0.01% thimerosal.

**Handling**

The antibody solution should be gently mixed before use.

**Reconstitution & Storage**

-20 °C

**Background Descriptions**

**Precautions**

Syndecan-1 Antibody is for research use only and not for use in diagnostic or therapeutic procedures.

**Syndecan-1 Antibody - Protein Information**

**Name** SDC1 ([HGNC:10658](#))

**Synonyms** SDC

**Function**

Cell surface proteoglycan that contains both heparan sulfate and chondroitin sulfate and that links the cytoskeleton to the interstitial matrix (By similarity). Regulates exosome biogenesis in concert with SDCBP and PDCD6IP (PubMed:<a href="http://www.uniprot.org/citations/22660413" target="\_blank">22660413</a>). Able to induce its own expression in dental mesenchymal cells and also in the neighboring dental epithelial cells via an MSX1-mediated pathway (By similarity).

**Cellular Location**

Membrane; Single-pass type I membrane protein. Secreted Secreted, extracellular exosome  
Note=Shedding of the ectodomain produces a soluble form

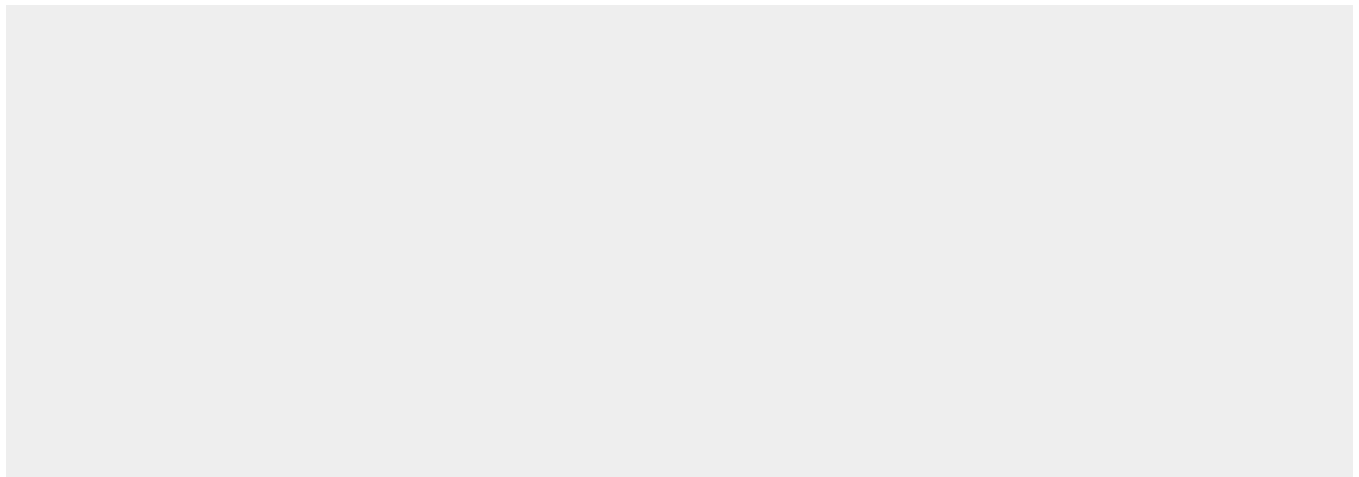
**Tissue Location**

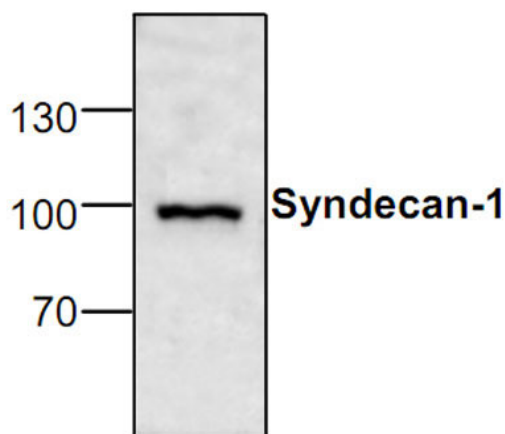
Detected in placenta (at protein level) (PubMed:32337544). Detected in fibroblasts (at protein level) (PubMed:36213313).

**Syndecan-1 Antibody - Protocols**

Provided below are standard protocols that you may find useful for product applications.

- [Western Blot](#)
- [Blocking Peptides](#)
- [Dot Blot](#)
- [Immunohistochemistry](#)
- [Immunofluorescence](#)
- [Immunoprecipitation](#)
- [Flow Cytometry](#)
- [Cell Culture](#)

**Syndecan-1 Antibody - Images**



Western blot analysis of Syndecan-1 in 3T3 cell lysate.

### **Syndecan-1 Antibody - Background**

Syndecans are type I integral membrane proteoglycans that are involved in cell-extracellular matrix adhesion and growth factor binding. Syndecan-1 is a matrix receptor which binds to Collagens, Fibronectin and Thrombospondin. Syndecan-1 and Syndecan-3 interact with MK (midkine), a growth/differentiation factor involved in embryogenesis. Syndecan-2 is highly expressed at areas of high morphogenetic activity, such as epithelial-mesenchymal interfaces and the prechondrogenic and preosteogenic mesenchymal condensations. Syndecan-4 functions cooperatively with integrins in the processes of cell spreading and focal adhesion assembly.