

EMR2 Antibody
Rabbit Polyclonal Antibody
Catalog # ABV10494**Specification**

EMR2 Antibody - Product Information

Application	WB
Primary Accession	Q9UHX3
Other Accession	A0JNV7
Reactivity	Human
Host	Rabbit
Clonality	Polyclonal
Isotype	Rabbit IgG
Calculated MW	90472

EMR2 Antibody - Additional Information**Gene ID** 30817

Positive Control
Application & Usage

Jurkat cell lysate
The antibody can be used in Western Blot analysis (1-4 µg/ml). However, the optimal concentrations should be determined individually. Blocking peptide is available separately.

Other Names

EGF-like module receptor 2, CD312

Target/Specificity

EMR2

Antibody Form

Liquid

Appearance

Colorless liquid

Formulation

100 µg (0.5 mg/ml) affinity purified rabbit anti- EMR2 polyclonal antibody in phosphate buffered saline (PBS), pH 7.2, containing 30% glycerol, 0.5% BSA, 5 mM EDTA and 0.01% thimerosal.

Handling

The antibody solution should be gently mixed before use.

Reconstitution & Storage

-20 °C

Background Descriptions

Precautions

EMR2 Antibody is for research use only and not for use in diagnostic or therapeutic procedures.

EMR2 Antibody - Protein Information

Name ADGRE2 ([HGNC:3337](#))

Synonyms EMR2

Function

Cell surface receptor that binds to the chondroitin sulfate moiety of glycosaminoglycan chains and promotes cell attachment. Promotes granulocyte chemotaxis, degranulation and adhesion. In macrophages, promotes the release of inflammatory cytokines, including IL8 and TNF. Signals probably through G-proteins. Is a regulator of mast cell degranulation (PubMed:26841242).

Cellular Location

Cell membrane; Multi-pass membrane protein. Cell projection, ruffle membrane; Multi-pass membrane protein. Note=Localized at the leading edge of migrating cells.

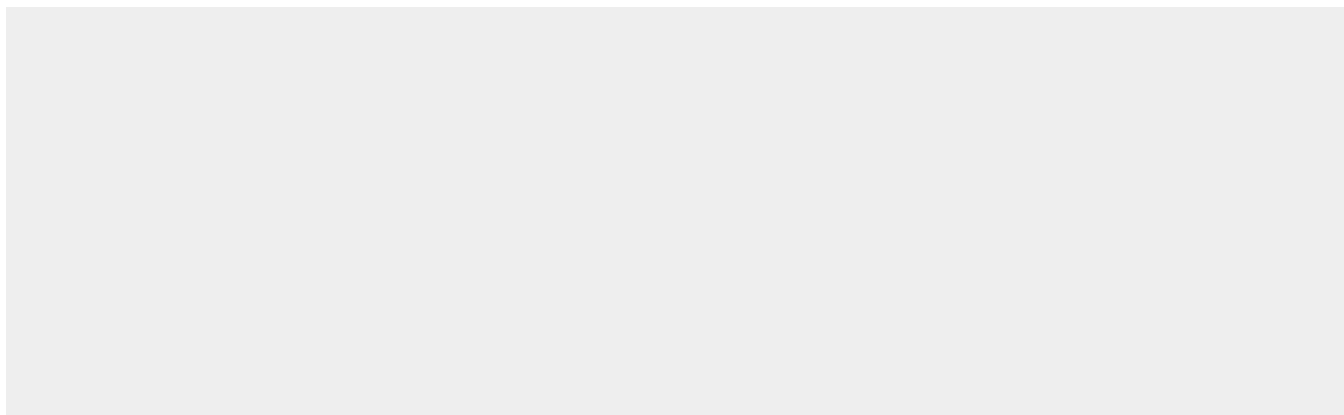
Tissue Location

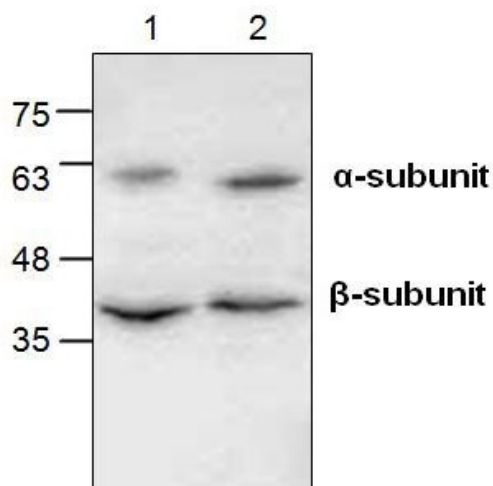
Expression is restricted to myeloid cells. Highest expression was found in peripheral blood leukocytes, followed by spleen and lymph nodes, with intermediate to low levels in thymus, bone marrow, fetal liver, placenta, and lung, and no expression in heart, brain, skeletal muscle, kidney, or pancreas. Expression is also detected in monocyte/macrophage and Jurkat cell lines but not in other cell lines tested. High expression in mast cells (PubMed:26841242)

EMR2 Antibody - Protocols

Provided below are standard protocols that you may find useful for product applications.

- [Western Blot](#)
- [Blocking Peptides](#)
- [Dot Blot](#)
- [Immunohistochemistry](#)
- [Immunofluorescence](#)
- [Immunoprecipitation](#)
- [Flow Cytometry](#)
- [Cell Culture](#)

EMR2 Antibody - Images



Western blot analysis of EMR2 in Jurkat cell lysate (Lane 1 & 2).

EMR2 Antibody - Background

EGF-like module-containing mucin-like receptor 2 (EMR2) is a member of the class B seven-span transmembrane (TM7) receptor family. EMR2 is expressed predominantly by cells of the immune system such as leukocytes. EMR2 is proteolytically cleaved into two subunits: a seven-transmembrane subunit, and an extracellular α subunit.