

**Math1 (ATH1/ATOH1) Antibody**  
**Rabbit Polyclonal Antibody**  
**Catalog # ABV10496****Specification**

---

**Math1 (ATH1/ATOH1) Antibody - Product Information**

Application	WB
Primary Accession	<a href="#">Q92858</a>
Reactivity	Human, Mouse, Rat
Host	Rabbit
Clonality	Polyclonal
Isotype	Rabbit IgG
Calculated MW	38160

**Math1 (ATH1/ATOH1) Antibody - Additional Information****Gene ID 474**

Application & Usage	<b>Western blotting (1:200-1000) and Immunohistochemistry (1:100-500). However, the optimal conditions should be determined individually. Other applications have not been determined. The antibody detects Math1 in samples from human, mouse, and rat origins. Other species have not been tested.</b>
---------------------	--

**Other Names**

ATOH1 , MATH-1 , ATH1 , Math1 , HATH1

**Target/Specificity**

Math1

**Antibody Form**

Liquid

**Appearance**

Colorless liquid

**Formulation**

100 µl affinity purified rabbit anti-Math1 (also called ATH1) polyclonal antibody in phosphate buffered saline (PBS), pH 7.2, containing 30% glycerol, 0.5% BSA, 0.01% thimerosal.

**Handling**

The antibody solution should be gently mixed before use.

**Reconstitution & Storage**

-20 °C

**Background Descriptions**

**Precautions**

Math1 (ATH1/ATOH1) Antibody is for research use only and not for use in diagnostic or therapeutic procedures.

**Math1 (ATH1/ATOH1) Antibody - Protein Information**

**Name** ATOH1 ([HGNC:797](#))

**Synonyms** ATH1, BHLHA14

**Function**

Transcriptional regulator. Activates E box-dependent transcription in collaboration with TCF3/E47, but the activity is completely antagonized by the negative regulator of neurogenesis HES1. Plays a role in the differentiation of subsets of neural cells by activating E box-dependent transcription (By similarity).

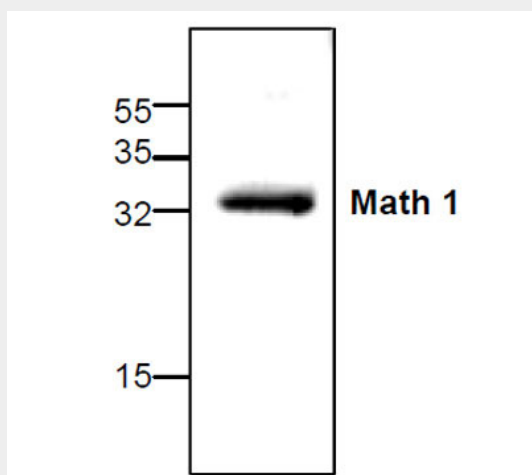
**Cellular Location**

Nucleus.

**Math1 (ATH1/ATOH1) Antibody - Protocols**

Provided below are standard protocols that you may find useful for product applications.

- [Western Blot](#)
- [Blocking Peptides](#)
- [Dot Blot](#)
- [Immunohistochemistry](#)
- [Immunofluorescence](#)
- [Immunoprecipitation](#)
- [Flow Cytometry](#)
- [Cell Culture](#)

**Math1 (ATH1/ATOH1) Antibody - Images**

Western blot analysis of Math 1 using Jurkat cell lysate.

**Math1 (ATH1/ATOH1) Antibody - Background**

Math1 belongs to the basic helix-loop-helix (BHLH) family of transcription factors. It activates E-box dependent transcription along with E47. It is neural-specific and is switched on during differentiation into neuroectoderm.