

NCS-1 Antibody
Rabbit Polyclonal Antibody
Catalog # ABV10526**Specification**

NCS-1 Antibody - Product Information

Application	WB
Primary Accession	P62166
Other Accession	AAP97256
Reactivity	Human, Rat
Host	Rabbit
Clonality	Polyclonal
Isotype	Rabbit IgG
Calculated MW	21879

NCS-1 Antibody - Additional Information**Gene ID** 23413**Application & Usage**

Western blotting (0.5-4 µg/ml). However, the optimal concentrations should be determined individually. Rat kidney tissue lysate can be used as a positive control. The antibody recognizes ~24 kDa NCS-1 from samples of human and rat origins. Reactivity to other species has not been determined.

Other Names

FREQ , FLUP , NCS1 , ANTI NEURONAL CALCIUM SENSOR 1 , Frequentin , NCS-1

Target/Specificity

NCS-1

Antibody Form

Liquid

Appearance

Colorless liquid

Formulation

100 µg (0.5 mg/ml) Protein A affinity purified rabbit polyclonal antibody in phosphate-buffered saline (PBS) containing 30% glycerol, 0.5% BSA, and 0.01% thimerosal.

Handling

The antibody solution should be gently mixed before use.

Reconstitution & Storage

-20 °C

Background Descriptions

Precautions

NCS-1 Antibody is for research use only and not for use in diagnostic or therapeutic procedures.

NCS-1 Antibody - Protein Information

Name NCS1

Synonyms FLUP, FREQ

Function

Neuronal calcium sensor, regulator of G protein-coupled receptor phosphorylation in a calcium dependent manner. Directly regulates GRK1 (RHOK), but not GRK2 to GRK5. Can substitute for calmodulin (By similarity). Stimulates PI4KB kinase activity (By similarity). Involved in long-term synaptic plasticity through its interaction with PICK1 (By similarity). May also play a role in neuron differentiation through inhibition of the activity of N-type voltage- gated calcium channel (By similarity).

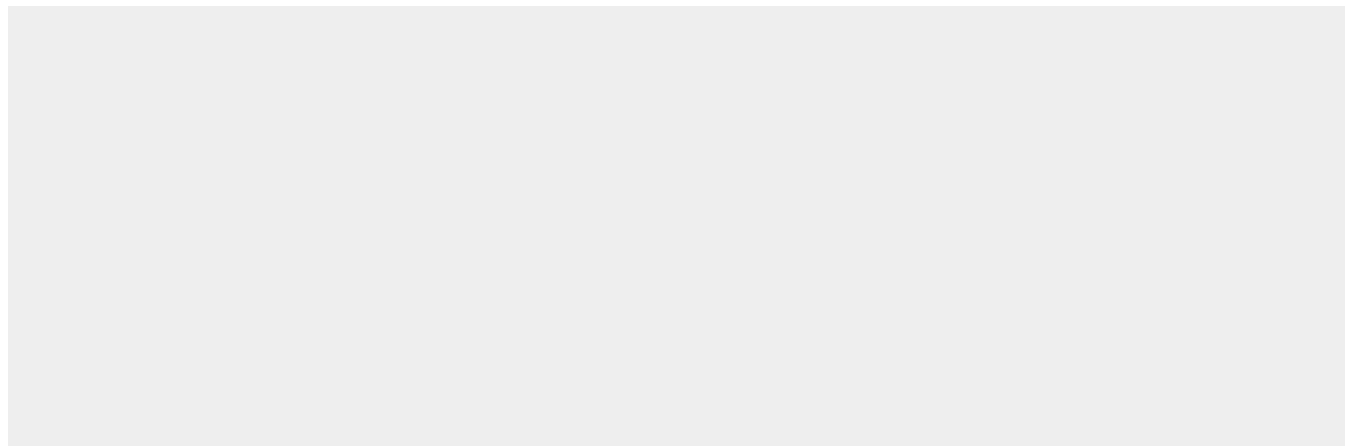
Cellular Location

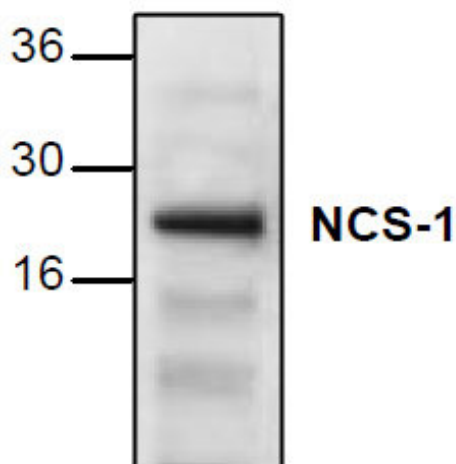
Golgi apparatus. Postsynaptic density. Cytoplasm, perinuclear region. Cytoplasm {ECO:0000250|UniProtKB:P62168}. Cell membrane; Peripheral membrane protein. Membrane {ECO:0000250|UniProtKB:P62168}; Lipid-anchor Note=Associated with Golgi stacks. Post-synaptic densities of dendrites, and in the pre-synaptic nerve terminal at neuromuscular junctions. {ECO:0000305, ECO:0000305|PubMed:17555535}

NCS-1 Antibody - Protocols

Provided below are standard protocols that you may find useful for product applications.

- [Western Blot](#)
- [Blocking Peptides](#)
- [Dot Blot](#)
- [Immunohistochemistry](#)
- [Immunofluorescence](#)
- [Immunoprecipitation](#)
- [Flow Cytometry](#)
- [Cell Culture](#)

NCS-1 Antibody - Images



Western blot analysis of NCS-1 with rat kidney tissue lysate.

NCS-1 Antibody - Background

The neuronal calcium sensor (NCS) protein binds to calcium through EF-hand motifs, are expressed in neurons. They are implicated in the regulation of neurotransmitters released at the neuromuscular junctions. NCS-1 is widely distributed in the brain, spinal cord and dorsal root ganglia. It has been shown to regulate neurosecretion in a calcium-dependent manner, potentiates nitric oxide synthase activity. NCS-1 has been reserved to indicate the protein observed in humans and mammals.