

Tubulin Antibody
Rabbit Polyclonal Antibody
Catalog # ABV10541**Specification**

Tubulin Antibody - Product Information

| | |
|-----------------|----------------------------|
| Application | WB |
| Other Accession | AAP36356.1 |
| Reactivity | Human, Mouse, Rat |
| Host | Rabbit |
| Clonality | Polyclonal |
| Isotype | Rabbit IgG |

Tubulin Antibody - Additional Information

| | |
|---------------------|---|
| Application & Usage | Western blotting (0.5-4 µg/ml). However, the optimal concentrations should be determined individually. HeLa cell or Jurkat cell lysate can be used as a positive control. The antibody recognizes 55 kDa β-tubulin in samples of human, mouse, and rat origins. Reactivity to other species has not been determined. |
|---------------------|---|

Other Names

TUBB , TUBB1 , TUBB2 , Tubulin beta 2 , Tubulin beta 2A , Tubulin beta , Alpha tubulin

Target/Specificity

Tubulin

Antibody Form

Liquid

Appearance

Colorless liquid

Formulation

100 µg (0.5 mg/ml) affinity purified rabbit polyclonal antibody in phosphate-buffered saline (PBS) containing 30% glycerol, 0.5% BSA, and 0.01% thimerosal.

Handling

The antibody solution should be gently mixed before use.

Reconstitution & Storage

-20 °C

Background Descriptions**Precautions**

Tubulin Antibody is for research use only and not for use in diagnostic or therapeutic procedures.

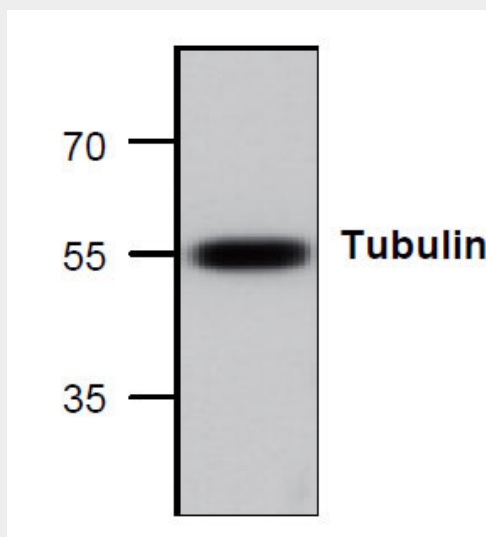
Tubulin Antibody - Protein Information

Tubulin Antibody - Protocols

Provided below are standard protocols that you may find useful for product applications.

- [Western Blot](#)
- [Blocking Peptides](#)
- [Dot Blot](#)
- [Immunohistochemistry](#)
- [Immunofluorescence](#)
- [Immunoprecipitation](#)
- [Flow Cytometry](#)
- [Cell Culture](#)

Tubulin Antibody - Images



Western blot analysis of Tubulin in HeLa cell lysate.

Tubulin Antibody - Background

Microtubules are one type of cytoskeleton. Globular tubulin subunits are the building blocks of a microtubule and the α and β -tubulin heterodimer forms the tubulin subunits, which is present in all eukaryotic cells. Microtubules mediate many cell movements.