

Carboxypeptidase A1 (CPA1) Antibody
Rabbit Polyclonal Antibody
Catalog # ABV10639**Specification**

Carboxypeptidase A1 (CPA1) Antibody - Product Information

Application	WB
Primary Accession	P15085
Reactivity	Human, Mouse, Rat
Host	Rabbit
Clonality	Polyclonal
Isotype	Rabbit IgG
Calculated MW	47140

Carboxypeptidase A1 (CPA1) Antibody - Additional Information**Gene ID** 1357**Application & Usage****Western blot analysis (0.5-4 µg/ml).**
However, the optimal conditions should be determined individually.**Other Names**

CPA

Target/Specificity

CPA1

Antibody Form

Liquid

Appearance

Colorless liquid

Formulation

100 µg (0.5 mg/ml) affinity purified rabbit anti-Carboxypeptidase A1 polyclonal antibody in phosphate buffered saline (PBS), pH 7.2, containing 30% glycerol, 0.5% BSA, and 0.01% thimerosal.

Handling

The antibody solution should be gently mixed before use.

Reconstitution & Storage

-20 °C

Background Descriptions**Precautions**

Carboxypeptidase A1 (CPA1) Antibody is for research use only and not for use in diagnostic or therapeutic procedures.

Carboxypeptidase A1 (CPA1) Antibody - Protein Information

Name CPA1 ([HGNC:2296](#))

Synonyms CPA

Function

Carboxypeptidase that catalyzes the release of a C-terminal amino acid, but has little or no action with -Asp, -Glu, -Arg, -Lys or -Pro (PubMed:8806703). Catalyzes the conversion of leukotriene C4 to leukotriene F4 via the hydrolysis of an amide bond (By similarity).

Cellular Location

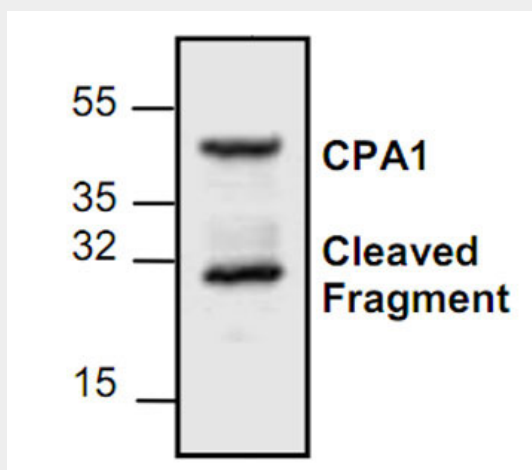
Secreted.

Carboxypeptidase A1 (CPA1) Antibody - Protocols

Provided below are standard protocols that you may find useful for product applications.

- [Western Blot](#)
- [Blocking Peptides](#)
- [Dot Blot](#)
- [Immunohistochemistry](#)
- [Immunofluorescence](#)
- [Immunoprecipitation](#)
- [Flow Cytometry](#)
- [Cell Culture](#)

Carboxypeptidase A1 (CPA1) Antibody - Images



Western blot analysis of CPA1 expression in Jurkat cell lysate

Carboxypeptidase A1 (CPA1) Antibody - Background

Carboxypeptidase A1 (CPA1) is a pancreatic peptidase that comes from the precursor form of inactive procarboxypeptidase. Carboxypeptidase A1 is a monomeric pancreatic exopeptidase that involved in zymogen inhibition.