

Matrilin-2 Antibody
Rabbit Polyclonal Antibody
Catalog # ABV10651**Specification**

Matrilin-2 Antibody - Product Information

Application	WB
Primary Accession	O00339
Reactivity	Human, Mouse, Rat
Host	Rabbit
Clonality	Polyclonal
Isotype	Rabbit IgG
Calculated MW	106837

Matrilin-2 Antibody - Additional Information**Gene ID** 4147**Application & Usage**

Western blotting (0.5-4 µg/ml). However, the optimal concentrations should be determined individually. The antibody recognizes 120-150 kDa Matrilin-2 from samples of human, mouse and rat origins. An additional ~55 kDa band and a ~38 kDa band can also be detected in rat kidney and Jurkat cells, individually. Other species have not been determined.

Other Names

MATN2

Target/Specificity

Matrilin-2

Antibody Form

Liquid

Appearance

Colorless liquid

Formulation

100 µg (0.5 mg/ml) affinity purified rabbit anti-Matrilin-2 polyclonal antibody in phosphate-buffered saline (PBS) containing 30% glycerol, 0.5% BSA, and 0.01% thimerosal.

Handling

The antibody solution should be gently mixed before use.

Reconstitution & Storage

-20 °C

Background Descriptions

Precautions

Matrilin-2 Antibody is for research use only and not for use in diagnostic or therapeutic procedures.

Matrilin-2 Antibody - Protein Information

Name MATN2

Function

Involved in matrix assembly.

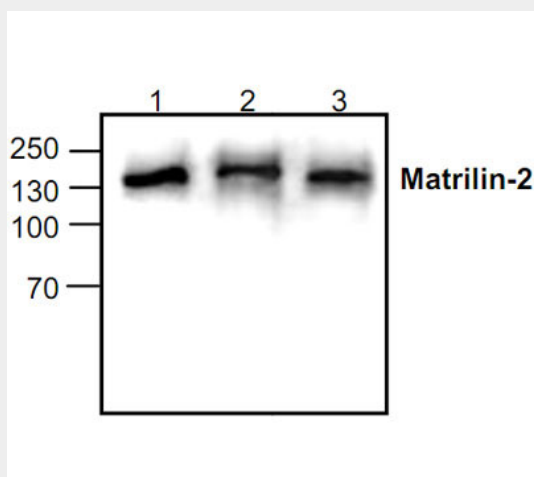
Cellular Location

Secreted.

Matrilin-2 Antibody - Protocols

Provided below are standard protocols that you may find useful for product applications.

- [Western Blot](#)
- [Blocking Peptides](#)
- [Dot Blot](#)
- [Immunohistochemistry](#)
- [Immunofluorescence](#)
- [Immunoprecipitation](#)
- [Flow Cytometry](#)
- [Cell Culture](#)

Matrilin-2 Antibody - Images

Western blot analysis of Matrilin-2 in Rat kidney tissue lysate (Lane 1), 3T3 cell lysate (Lane 2) and Jurkat cell lysate (Lane 3).

Matrilin-2 Antibody - Background

Matrilin-2 is part of the Matrilin family of secreted extracellular matrix proteins that consist of Matrilin -1 to Matrilin-4. Matrilin-2 encodes a member of the von Willebrand factor A domain protein

family. It is involved in matrix assembly and development of filamentous networks in the extracellular matrices of various tissues.