

**FoxH1 Antibody**  
**Rabbit Polyclonal Antibody**  
**Catalog # ABV10689****Specification**

---

**FoxH1 Antibody - Product Information**

Application	WB
Primary Accession	<a href="#">O88621</a>
Other Accession	<a href="#">AAD14683</a>
Reactivity	Human, Mouse, Rat
Host	Rabbit
Clonality	Polyclonal
Isotype	Rabbit IgG
Calculated MW	44001

**FoxH1 Antibody - Additional Information****Gene ID** 14106

Application & Usage	<b>Western blotting (0.5-4 µg/ml). However, the optimal conditions should be determined individually. The antibody recognizes ~44kDa of FoxH1 from samples of human, mouse and rat origins. Reactivity to other species has not been tested.</b>
---------------------	--

**Other Names**

FOX H1, FOXH 1, Forkhead box H1, Forkhead box protein H1, Forkhead activin signal transducer 1, Forkhead activin Signal Transducer 2, FAST-1, FAST1

**Target/Specificity**

FoxH1

**Antibody Form**

Liquid

**Appearance**

Colorless liquid

**Formulation**

100 µg (0.5 mg/ml) affinity purified rabbit polyclonal antibody in phosphate-buffered saline (PBS), pH 7.2, containing 30% glycerol, 0.5% BSA, and 0.01% thimerosal.

**Handling**

The antibody solution should be gently mixed before use.

**Reconstitution & Storage**

-20 °C

**Background Descriptions**

**Precautions**

FoxH1 Antibody is for research use only and not for use in diagnostic or therapeutic procedures.

**FoxH1 Antibody - Protein Information**

**Name** Foxh1

**Synonyms** Fast1, Fast2

**Function**

Transcriptional activator. Recognizes and binds to the DNA sequence 5'-TGT[GT][GT]ATT-3'. Required for induction of the goosecoid (GSC) promoter by TGF-beta or activin signaling. Forms a transcriptionally active complex containing FOXH1/SMAD2/SMAD4 on a site on the GSC promoter called TARE (TGF-beta/activin response element).

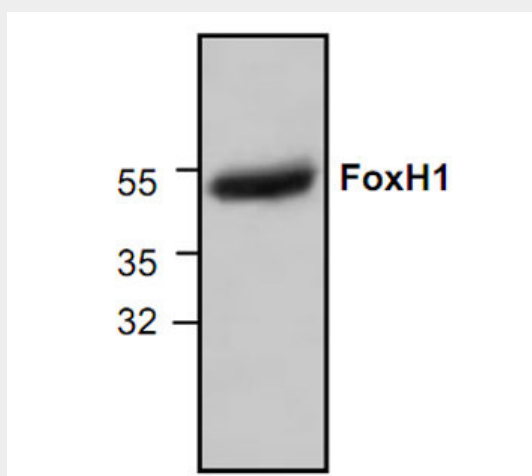
**Cellular Location**

Nucleus.

**FoxH1 Antibody - Protocols**

Provided below are standard protocols that you may find useful for product applications.

- [Western Blot](#)
- [Blocking Peptides](#)
- [Dot Blot](#)
- [Immunohistochemistry](#)
- [Immunofluorescence](#)
- [Immunoprecipitation](#)
- [Flow Cytometry](#)
- [Cell Culture](#)

**FoxH1 Antibody - Images**

Western blot analysis of FoxH1 expression in 3T3 cell lysate.

**FoxH1 Antibody - Background**

FoxH1 (also known as Forkhead box H1 or FAST-1) is a transcription factor that shares close homology with *Xenopus* FAST-1. FoxH1 binds to SMAD2/4 and activates activin response through a DNA binding motif region that consists of TGT(G/T)(T/G)ATT sequence. FoxH1 binding to Smad2/Smad4/FAST1 forms a transcriptionally complex structure that can induce TGF $\beta$  signal transduction.