

DPP10 Antibody
Rabbit Polyclonal Antibody
Catalog # ABV10695**Specification**

DPP10 Antibody - Product Information

Application	WB
Primary Accession	Q6NWK7
Other Accession	AAH63074.4
Reactivity	Human, Mouse, Rat
Host	Rabbit
Clonality	Polyclonal
Isotype	Rabbit IgG
Calculated MW	90827

DPP10 Antibody - Additional Information**Gene ID** 269109**Application & Usage****Western blotting (0.5-4 µg/ml). However, the optimal conditions should be determined individually. The antibody recognizes ~90-97 kDa DPP10 in samples from human, mouse and rat origins.****Other Names**

DPP-10, DPP 10, Dipeptidyl Peptidase 10, DPPY splice variant c, dipeptidylpeptidase 10

Target/Specificity

DPP10

Antibody Form

Liquid

Appearance

Colorless liquid

Formulation

200 µg (0.5 mg/ml) affinity purified rabbit DPP10 polyclonal antibody in phosphate-buffered saline (PBS) containing 30% glycerol, 0.5% BSA, and 0.01% thimerosal.

Handling

The antibody solution should be gently mixed before use.

Reconstitution & Storage

-20 °C

Background Descriptions**Precautions**

DPP10 Antibody is for research use only and not for use in diagnostic or therapeutic procedures.

DPP10 Antibody - Protein Information

Name Dpp10

Function

Promotes cell surface expression of the potassium channel KCND2 (PubMed:22311982). Modulates the activity and gating characteristics of the potassium channel KCND2 (PubMed:22311982). Has no dipeptidyl aminopeptidase activity (Probable).

Cellular Location

Cell membrane; Single-pass type II membrane protein

Tissue Location

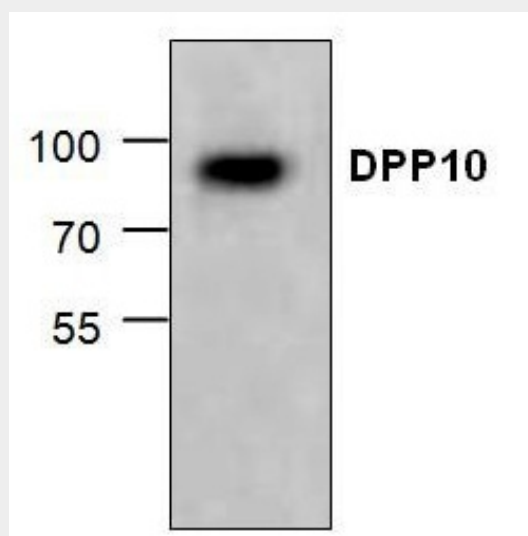
Detected in brain cortex (at protein level) (PubMed:22311982). Expressed in the brain, predominantly by neurons and not by glia.

DPP10 Antibody - Protocols

Provided below are standard protocols that you may find useful for product applications.

- [Western Blot](#)
- [Blocking Peptides](#)
- [Dot Blot](#)
- [Immunohistochemistry](#)
- [Immunofluorescence](#)
- [Immunoprecipitation](#)
- [Flow Cytometry](#)
- [Cell Culture](#)

DPP10 Antibody - Images



Western blot analysis of DPP10 expression in Jurkat cell lysate.

DPP10 Antibody - Background

Dipeptidyl peptidase 10 or DPP10 is a single-pass type II membrane protein that belongs to the S9B family of DPP serine proteases. The conserved serine residue which normally found in the serine proteases family is not present in DPP10. Thus, DPP10 has no detectable proteases activity as the active serine site is replaced by a glycine residue. DPP10 cleaves the terminal dipeptides from cytokines and chemokines and also facilitates the voltage-gated potassium channels. It is expressed mostly in the brain and is a potential target for asthma treatment.