

**AS160/TBC1 Antibody**  
**Rabbit Polyclonal Antibody**  
**Catalog # ABV10742****Specification**

---

**AS160/TBC1 Antibody - Product Information**

Application	WB
Primary Accession	<a href="#">O60343</a>
Reactivity	Human, Mouse, Rat
Host	Rabbit
Clonality	Polyclonal
Isotype	Rabbit IgG
Calculated MW	146563

**AS160/TBC1 Antibody - Additional Information****Gene ID** 9882

Positive Control	Jurkat, Rat kidney, 3T3 cell lysates
Application & Usage	The antibody can be used for Western blotting (1-4 µg/ml).

**Other Names**  
TBC1D4; AS160; DKFZp779C0666

**Target/Specificity**  
AS160/TBC1

**Antibody Form**  
Liquid

**Appearance**  
Colorless liquid

**Formulation**  
100 µg (0.5 mg/ml) affinity purified rabbit anti-AS160/TBC1 polyclonal antibody in phosphate buffered saline (PBS), pH 7.2, containing 30% glycerol, 0.5% BSA, 5 mM EDTA and 0.01% thimerosal.

**Handling**  
The antibody solution should be gently mixed before use.

**Reconstitution & Storage**  
-20 °C

**Background Descriptions**

**Precautions**  
AS160/TBC1 Antibody is for research use only and not for use in diagnostic or therapeutic procedures.

## **AS160/TBC1 Antibody - Protein Information**

**Name** TBC1D4

**Synonyms** AS160, KIAA0603

### **Function**

May act as a GTPase-activating protein for RAB2A, RAB8A, RAB10 and RAB14. Isoform 2 promotes insulin-induced glucose transporter SLC2A4/GLUT4 translocation at the plasma membrane, thus increasing glucose uptake.

### **Cellular Location**

Cytoplasm. Note=Isoform 2 shows a cytoplasmic perinuclear localization in a myoblastic cell line in resting and insulin-stimulated cells

### **Tissue Location**

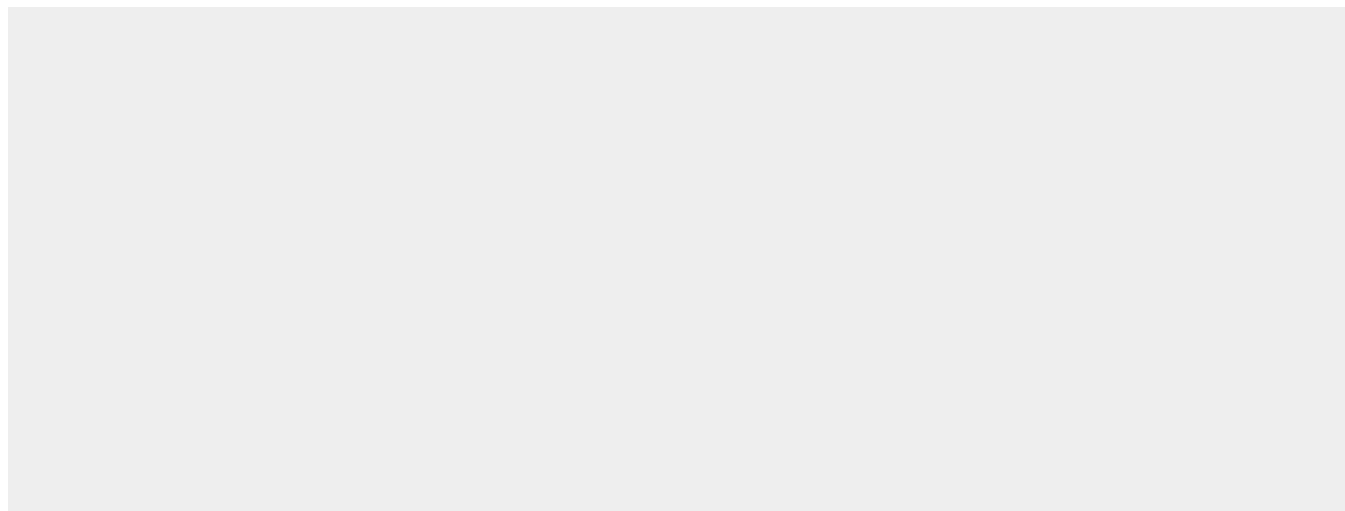
Widely expressed. Isoform 2 is the highest overexpressed in most tissues. Isoform 1 is highly expressed in skeletal muscle and heart, but was not detectable in the liver nor in adipose tissue. Isoform 2 is strongly expressed in adrenal and thyroid gland, and also in lung, kidney, colon, brain and adipose tissue Isoform 2 is moderately expressed in skeletal muscle. Expressed in pancreatic Langerhans islets, including beta cells (at protein level) Expression is decreased by twofold in pancreatic islets in type 2 diabetes patients compared to control subjects. Up-regulated in T-cells from patients with atopic dermatitis.

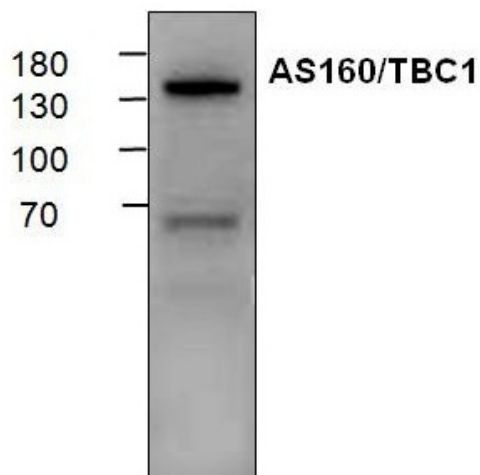
## **AS160/TBC1 Antibody - Protocols**

Provided below are standard protocols that you may find useful for product applications.

- [Western Blot](#)
- [Blocking Peptides](#)
- [Dot Blot](#)
- [Immunohistochemistry](#)
- [Immunofluorescence](#)
- [Immunoprecipitation](#)
- [Flow Cytometry](#)
- [Cell Culture](#)

## **AS160/TBC1 Antibody - Images**





Western blot analysis of AS160/TBC1 with lysate from Jurkat cells.

#### **AS160/TBC1 Antibody - Background**

AS160 is a 160 kDa Akt serine/threonine kinase substrate that plays a critical role in regulating insulin-stimulated exocytosis of glucose transporter GLUT4. Increased in insulin treatment stimulate phosphorylation of AS160 that regulates GLUT4 translocation via inactivation of the Rab GTPase function.