

PDE3B Antibody
Rabbit Polyclonal Antibody
Catalog # ABV10744**Specification**

PDE3B Antibody - Product Information

Application	WB
Primary Accession	Q13370
Reactivity	Human, Mouse, Rat
Host	Rabbit
Clonality	Polyclonal
Isotype	Rabbit IgG
Calculated MW	124333

PDE3B Antibody - Additional Information**Gene ID** 5140

Positive Control	Jurkat, Rat kidney, 3T3 cell lysates
Application & Usage	The antibody can be used for Western blotting (1-4 µg/ml).

Other Names

cGMP-inhibited 3', 5'-cyclic phosphodiesterase B, 3.1.4.17, CGIPDE1, CGIP1, Cyclic GMP-inhibited phosphodiesterase B, CGI-PDE B, PDE3B

Target/Specificity

PDE3B

Antibody Form

Liquid

Appearance

Colorless liquid

Formulation

200 µg (0.5 mg/ml) affinity purified rabbit anti-PDE3B polyclonal antibody in phosphate buffered saline (PBS), pH 7.2, containing 30% glycerol, 0.5% BSA, 5 mM EDTA and 0.01% thimerosal.

Handling

The antibody solution should be gently mixed before use.

Reconstitution & Storage

-20 °C

Background Descriptions**Precautions**

PDE3B Antibody is for research use only and not for use in diagnostic or therapeutic procedures.

PDE3B Antibody - Protein Information

Name PDE3B ([HGNC:8779](#))

Function

Cyclic nucleotide phosphodiesterase with a dual-specificity for the second messengers cAMP and cGMP, which are key regulators of many important physiological process (PubMed:14592490, PubMed:21393242). Regulates angiogenesis by inhibiting the cAMP- dependent guanine nucleotide exchange factor RAPGEF3 and downstream phosphatidylinositol 3-kinase gamma-mediated signaling (PubMed:21393242). Controls cardiac contractility by reducing cAMP concentration in cardiocytes (By similarity).

Cellular Location

Membrane {ECO:0000250|UniProtKB:Q61409}; Multi- pass membrane protein

Tissue Location

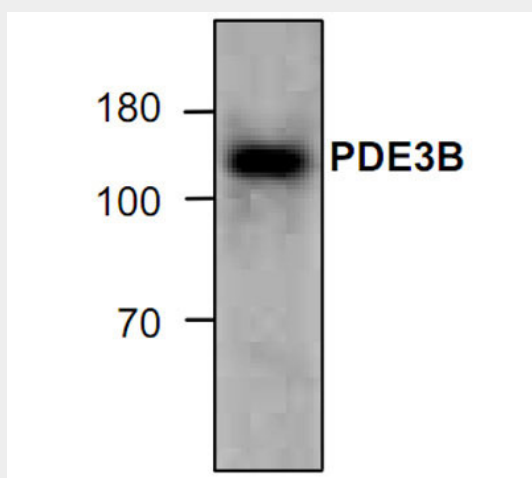
Abundant in adipose tissues.

PDE3B Antibody - Protocols

Provided below are standard protocols that you may find useful for product applications.

- [Western Blot](#)
- [Blocking Peptides](#)
- [Dot Blot](#)
- [Immunohistochemistry](#)
- [Immunofluorescence](#)
- [Immunoprecipitation](#)
- [Flow Cytometry](#)
- [Cell Culture](#)

PDE3B Antibody - Images



Western blot analysis of PDE3B with lysate from 3T3 cells.

PDE3B Antibody - Background

The phosphodiesterase type-3 (PDE3) family is comprised of 2 isoforms, PDE3A and PDE3B. Phosphodiesterases (PDE) are crucial in the regulation of the intracellular level of the second messenger cAMP by hydrolyzing cAMP to 5'AMP. PDE3B has two splice variants that are expressed in adipocyte tissue, hepatocyte, kidney, spermatocytes and embryonic neuroepithelium. Both PDE3A and PDE3B are potential targets for the treatment of obesity.