

STOX1 Antibody (CT)
Rabbit Polyclonal Antibody
Catalog # ABV10950**Specification**

STOX1 Antibody (CT) - Product Information

Application	WB
Primary Accession	Q6ZVD7
Reactivity	Human
Host	Rabbit
Clonality	Polyclonal
Isotype	Rabbit IgG1
Calculated MW	110962

STOX1 Antibody (CT) - Additional Information**Gene ID** 219736Positive Control
Application & Usage**Western Blot: Human liver tissue lysate**
Western Blot: 1 µg/ml, ELISA. However, the optimal conditions should be determined individually.**Other Names**

Storkhead-box protein 1, C10orf24, winged-helix domain-containing protein, PEE4

Target/Specificity

STOX1

Antibody Form

Liquid

Appearance

Colorless liquid

Formulation

100 µg (1 mg/ml) in 1X PBS containing 0.02 % sodium azide.

Handling

The antibody solution should be gently mixed before use.

Reconstitution & Storage

-20 °C

Background Descriptions**Precautions**

STOX1 Antibody (CT) is for research use only and not for use in diagnostic or therapeutic procedures.

STOX1 Antibody (CT) - Protein Information

Name STOX1

Synonyms C10orf24

Function

Involved in regulating the levels of reactive oxidative species and reactive nitrogen species and in mitochondrial homeostasis in the placenta (PubMed:24738702). Required for regulation of inner ear epithelial cell proliferation via the AKT signaling pathway (By similarity).

Cellular Location

[Isoform A]: Cytoplasm. Nucleus Cytoplasm, cytoskeleton, microtubule organizing center, centrosome. Note=In epithelial cells, diffusely expressed in the cytoplasm, particularly in peri-membrane cortical regions (By similarity). Concentrated at centrosomes during metaphase (PubMed:22253775). {ECO:0000250|UniProtKB:B2RQL2, ECO:0000269|PubMed:22253775}
[Isoform C]: Nucleus, nucleolus.

Tissue Location

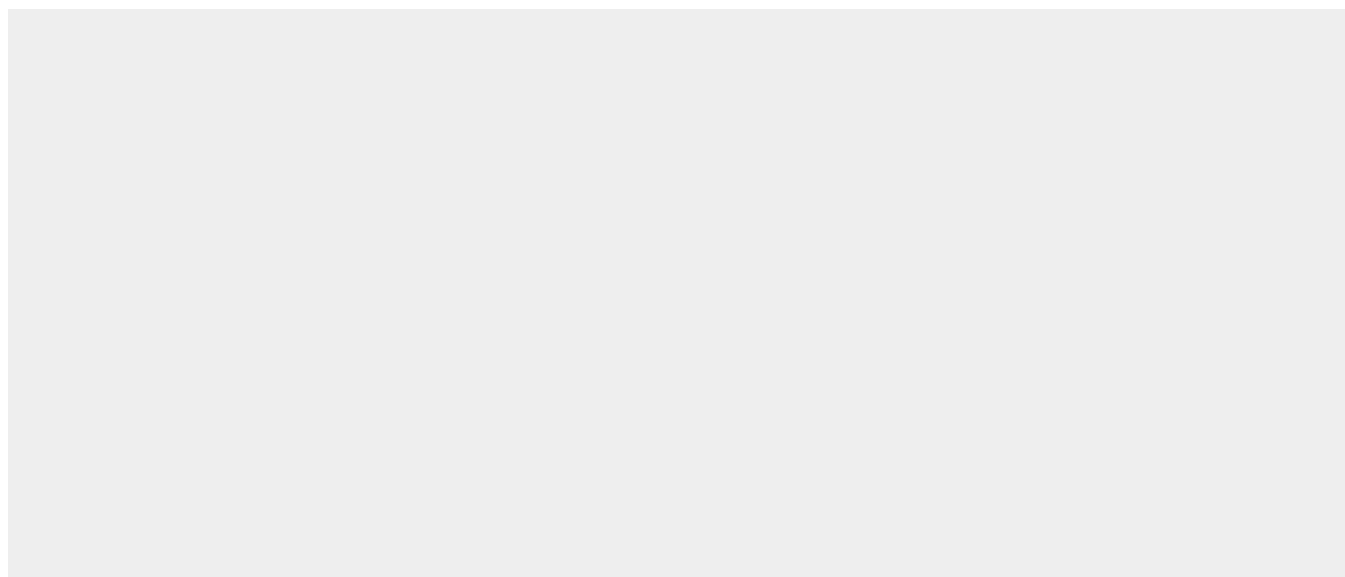
Expressed in placenta, including the invasive extravillous trophoblast cells.

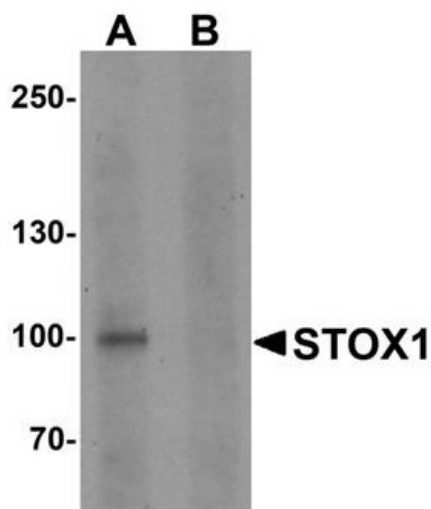
STOX1 Antibody (CT) - Protocols

Provided below are standard protocols that you may find useful for product applications.

- [Western Blot](#)
- [Blocking Peptides](#)
- [Dot Blot](#)
- [Immunohistochemistry](#)
- [Immunofluorescence](#)
- [Immunoprecipitation](#)
- [Flow Cytometry](#)
- [Cell Culture](#)

STOX1 Antibody (CT) - Images





Western blot analysis of STOX1 in human liver tissue lysate with STOX1 antibody at 1 μ g/ml in (A) the absence and (B) the presence of blocking peptide

STOX1 Antibody (CT) - Background

STOX1 (Storkhead box 1), also known as PEE4 or C10orf24, is a winged-helix domain containing transcription factor believed to play a role in the differentiation of stem cells. As a DNA-binding protein, STOX1 exists as three alternatively spliced isoforms, designated A, B and C, all of which localize to either the cytoplasm or the nucleus. Defects in STOX1 are the cause of pre-eclampsia/eclampsia 4 (PEE4), also known as gestational proteinuric hypertension. STOX1 was also found to be functionally involved in late-onset Alzheimer's disease.