

GFP mAntibody (Clone 1)
Mouse Monoclonal Antibody
Catalog # ABV10960**Specification**

GFP mAntibody (Clone 1) - Product Information

Application	WB
Other Accession	ABG78037
Reactivity	All Species
Host	Mouse
Clonality	Monoclonal
Isotype	Mouse IgG2b

GFP mAntibody (Clone 1) - Additional Information

Positive Control	Recombinant EGFP
Application & Usage	Western blotting (0.5-10 µg/ml).
Other Names	
GFP antibody, Green Fluorescent Protein antibody, Enhanced green Fluorescent antibody	

Target/Specificity

GFP

Antibody Form

Liquid

Appearance

Colorless liquid

Formulation

200 µg (1 mg/ml) in 1X PBS, pH 7.4 with 50% Glycerol

Handling

The antibody solution should be gently mixed before use.

Reconstitution & Storage

-20 °C

Background Descriptions**Precautions**

GFP mAntibody (Clone 1) is for research use only and not for use in diagnostic or therapeutic procedures.

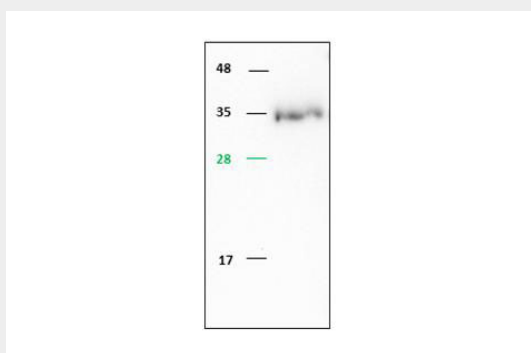
GFP mAntibody (Clone 1) - Protein Information

GFP mAntibody (Clone 1) - Protocols

Provided below are standard protocols that you may find useful for product applications.

- [Western Blot](#)
- [Blocking Peptides](#)
- [Dot Blot](#)
- [Immunohistochemistry](#)
- [Immunofluorescence](#)
- [Immunoprecipitation](#)
- [Flow Cytometry](#)
- [Cell Culture](#)

GFP mAntibody (Clone 1) - Images



Blot Probed with 10μ/ml of Purified antibody as primary antibody

GFP mAntibody (Clone 1) - Background

EGFP is an improved variant of GFP (green fluorescent protein) with intense green fluorescence. It is an ideal tool for monitoring the dynamics of tagged proteins for protein-protein integration, cell-sorting, organelle labeling, protein localization, gene expression and more. The anti-eGFP antibody recognizes over expressed recombinant proteins containing the eGFP tag fused to either the amino- or carboxy termini of targeted proteins in transfected mammalian cells or other expression systems.